

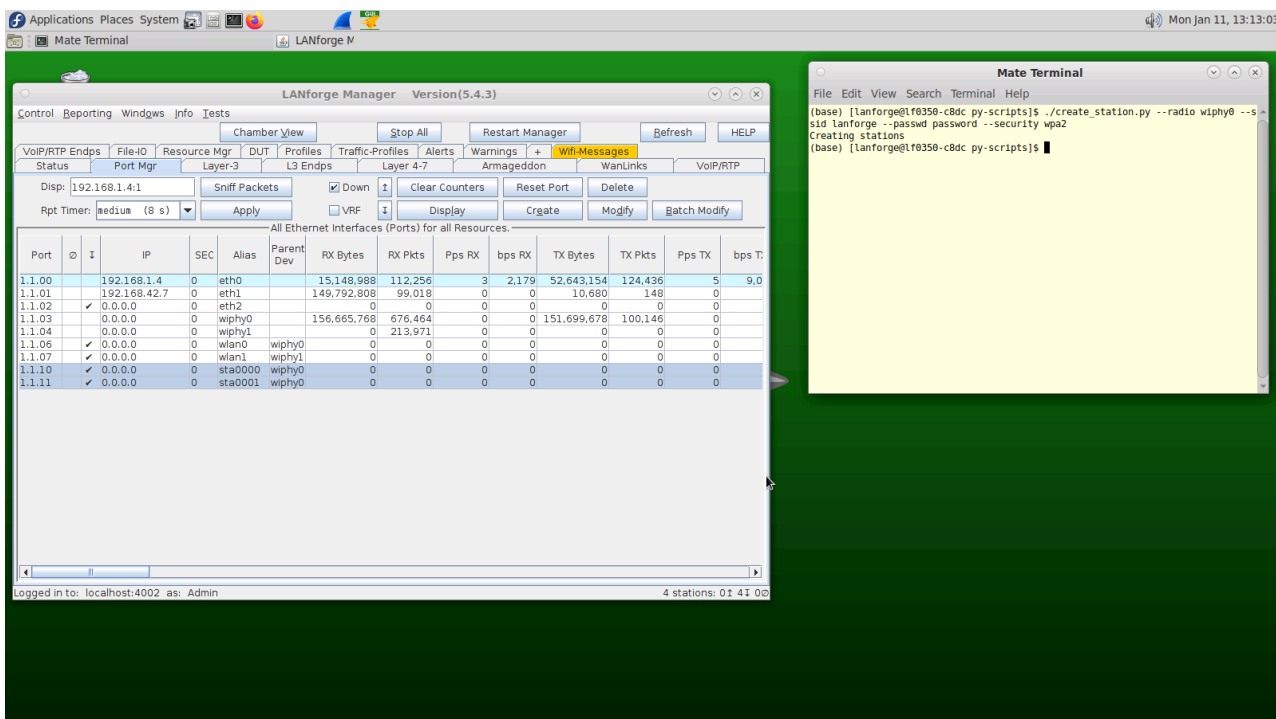
Getting Started with Python scripting for LANforge

Goal: After reading this, a user will know what python modules which are available to use LANforge. There are many of python modules which control LANforge. These allow the user to automate tasks. This cookbook will introduce you to six scripts to automate your systems. After following this guide, you will understand how to:

1. How to run a script

- A. We start in the /home/lanforge/scripts/py-scripts directory on your lanforge system
- B. On a Linux system, open your terminal and navigate to the py-scripts folder. You can run any python script by typing `python3 your_script_here.py --your_flag` into your command line. After the script, put any flags you need in order to run your test.

2. Station Creation



The screenshot shows the LANforge Manager interface (Version 5.4.3) with a table of Ethernet interfaces. The terminal window shows the execution of the `create_station.py` script with the following command:

```
(base) [lanforge@l6350-c8dc py-scripts]$ ./create_station.py --radio wiphy0 --ssid lanforge --passwd password --security wpa2
Creating stations
(base) [lanforge@l6350-c8dc py-scripts]$
```

Port	ID	IP	SEC	Alias	Parent Dev	RX Bytes	RX Pkts	Pps RX	bps RX	TX Bytes	TX Pkts	Pps TX	bps T
1.1.00		192.168.1.4	0	eth0		15,148,988	112,256	3	2,179	52,643,154	124,436	5	9.0
1.1.01		192.168.42.7	0	eth1		149,792,808	99,018	0	0	10,680	148	0	
1.1.02		0.0.0.0	0	eth2		0	0	0	0	0	0	0	
1.1.03		0.0.0.0	0	wiphy0		156,665,768	676,464	0	0	151,699,678	100,146	0	
1.1.04		0.0.0.0	0	wiphy1		0	213,971	0	0	0	0	0	
1.1.05		0.0.0.0	0	wlan0	wiphy0	0	0	0	0	0	0	0	
1.1.07		0.0.0.0	0	wlan1	wiphy1	0	0	0	0	0	0	0	
1.1.10		0.0.0.0	0	sta0000	wiphy0	0	0	0	0	0	0	0	
1.1.11		0.0.0.0	0	sta0001	wiphy0	0	0	0	0	0	0	0	

- A. The `create_station.py` script creates wi-fi stations from your terminal.
- B. Type `./create_station.py --radio wiphy0 --ssid lanforge --passwd password --security wpa2` into your terminal, remembering to change the `ssid`, `passwd`, and `security` fields to match your network credentials.
- C. This will create 2 stations on your lanforge device off of your `wiphy0` radio. You might need to wait 30 seconds for them to stop being phantom ports.
- D. You can specify the following flags as well:
 - A. `num_stations` - Specify a different number of stations to create off of your antenna. The default is 2.
 - B. `debug` - call this flag if you want detailed diagnostic information

3. Find available networks

- A. You can find available WiFi networks on any Linux device by typing `sudo iw dev wlan0 scan | grep SSID` into your command line

B. You can also find available WiFi networks by clicking on the station you created in the previous step,

4. Associate to a specific BSSID if you want to connect to a specific MAC Address for your router (which is called the BSSID) you can specify that on each station, you can do that in both the GUI and in the command line.

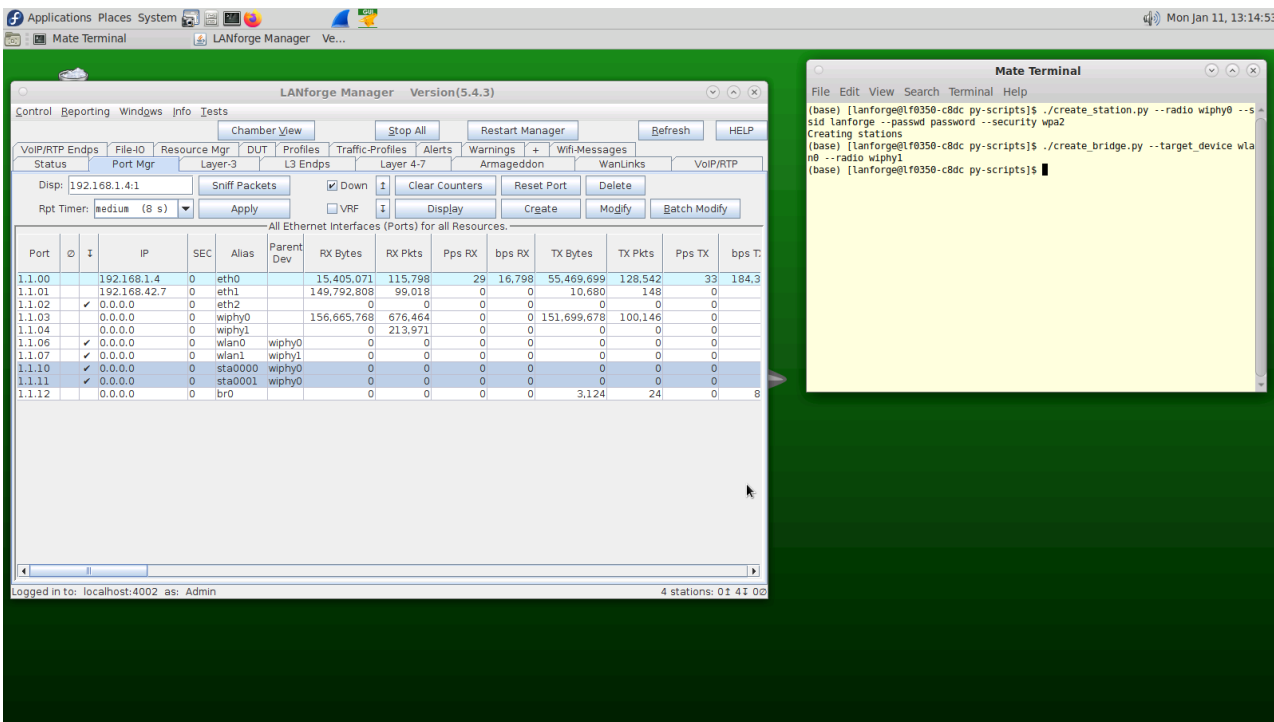
A. Connect via Command line

A. Each of your scripts has an optional AP tag where you can define the MAC address of the router you want to connect to. To do so, simply append `--ap` to the end of the command line argument you are running followed by the router's MAC Address.

B. Connect via GUI

A. When you double click on a Station there is an AP field inside WiFi Settings. Type the MAC Address of your router in that box and everything will work assuming the MAC Address is correct.

5. Bridge Creation



A. To create a bridge, you can use the `create_bridge.py` script in the `py_scripts` folder.

B. Type

```
./create_bridge.py --target_device wlan0 --radio wiphy1
```

Into terminal, remembering to change the `ssid`, `passwd`, and `security` fields to match your network credentials.

C. `create_bridge` requires the following arguments:

- A. `target_device` - which device the bridge is going to connect
- B. `radio` - default is `wiphy0`

D. It is not valid to add stations to a bridge, they don't work like you would expect. Bridges can have: `eth` ports, `redirects` (`rdd`) ports, `vaps`, and `qvlan` ports. Ports in a bridge cannot have IP addresses.

6. VAP Creation

The screenshot shows the LANforge Manager interface with a table of Ethernet interfaces. The terminal window on the right shows the following commands and output:

```
(base) [lanforge@l16350-c8dc py-scripts]$ ./create_station.py --radio wiphy0 --ssid lanforge --passwd password --security wpa2
Creating stations
(base) [lanforge@l16350-c8dc py-scripts]$ ./create_bridge.py --target_device wlan0 --radio wiphy1
(base) [lanforge@l16350-c8dc py-scripts]$ ./create_vap.py --radio wiphy0 --security wpa2 --ssid lanforge --passwd password
lanforge
Creating VAPs
Creating VAPs
(base) [lanforge@l16350-c8dc py-scripts]$
```

Port	IP	SEC	Alias	Parent Dev	RX Bytes	RX Pkts	Pps RX	bps RX	TX Bytes	TX Pkts	Pps T
1.1.00	192.168.1.4	0	eth0		15,879,252	122,335	32	18,832	59,699,615	136,066	
1.1.01	192.168.42.7	0	eth1		149,792,808	99,018	0	0	10,680	148	
1.1.02	0.0.0.0	0	eth2		0	0	0	0	0	0	
1.1.03	0.0.0.0	0	wiphy0		172,565,436	743,107	114	218,612	151,702,868	100,168	
1.1.04	0.0.0.0	0	wiphy1		0	213,971	0	0	0	0	
1.1.06	0.0.0.0	0	wlan0	wiphy0	0	0	0	0	0	0	
1.1.07	0.0.0.0	0	wlan1	wiphy1	0	0	0	0	0	0	
1.1.10	0.0.0.0	0	sta0000	wiphy0	0	0	0	0	0	0	
1.1.11	0.0.0.0	0	sta0001	wiphy0	0	0	0	0	0	0	
1.1.12	0.0.0.0	0	br0		0	0	0	0	16,852	74	
1.1.14	0.0.0.0	0	1.1.vap0000	wiphy0	0	0	0	0	3,568	35	
1.1.16	0.0.0.0	0	1.1.vap0001	wiphy0	0	0	0	0	17,512	70	

- A. You can create a VAP from your terminal with the create_vap.py script.
- B. Type


```
./create_vap.py --radio wiphy0 --security wpa2 --ssid lanforge --passwd password
```

 into your terminal, remembering to change the ssid, passwd, and security fields to match your network credentials.
- C. create_vap supports the following flags:
 - A. num_vaps - A user defined number of VAPs to create off of your antenna
 - B. upstream_port - if your ethernet cable to your router is not eth1, define it using this flag. Eth1 is the default for this flag.
 - C. debug - call this flag if you want detailed diagnostic information

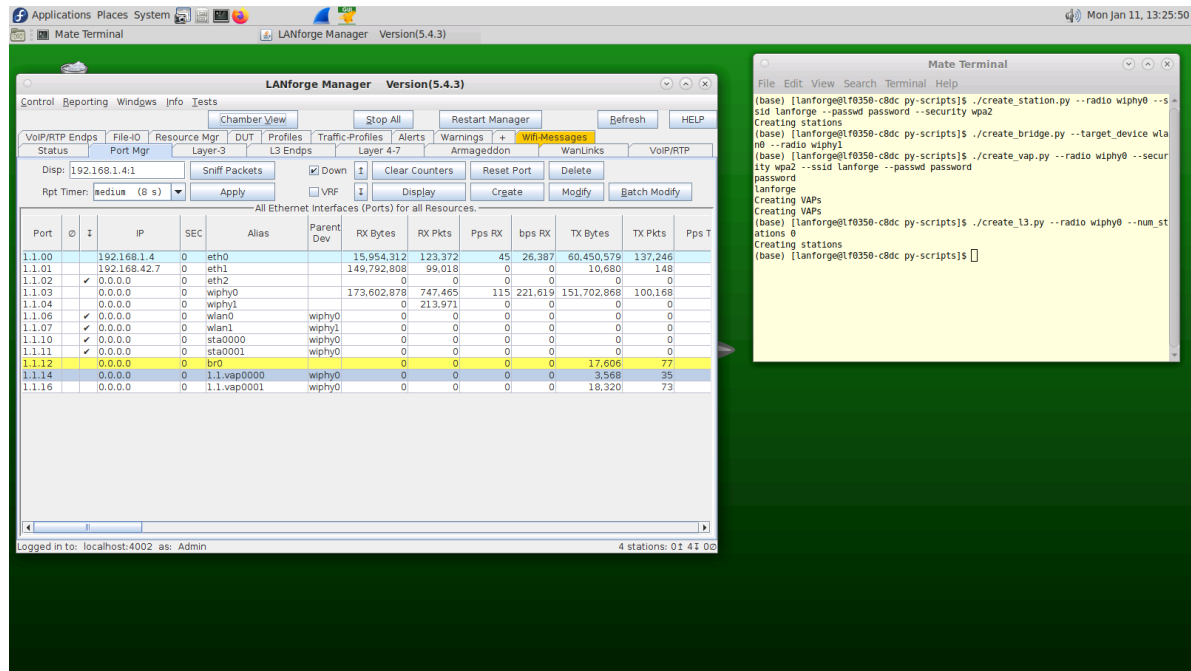
7. Layer-3 Cross Connect

- A. In your py-scripts, there is a create_l3 script which allows you to create stations in your terminal.
- B. Type

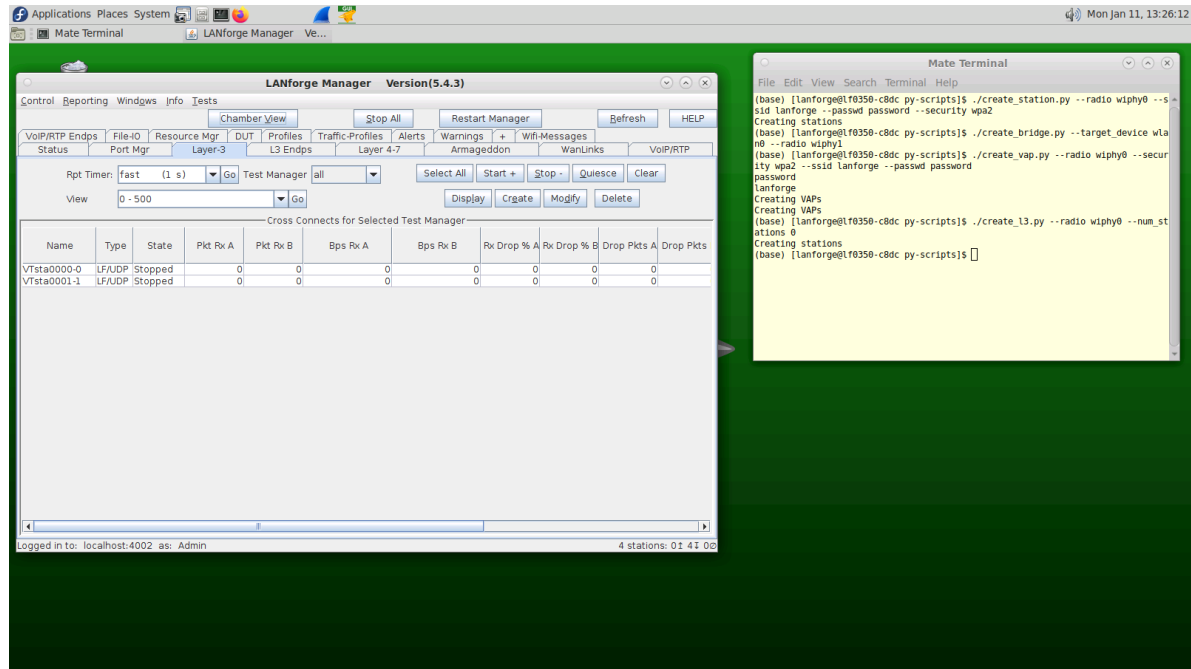

```
./create_l3.py --radio wiphy0 --num_stations 0
```

 into your terminal, remembering to change the ssid, passwd, and security fields to match your network credentials.
- C. This will create a layer3 cross connect between each station you already built on your lanforge device and your wiphy0 radio. You might need to wait 30 seconds for them to stop being phantom ports. If you do not specify num_stations 0 it would have created two stations by default off your specified radio. You can change which port the cross connect will be connected to with the --upstream_port option.
- D. You can specify the following flags as well:
 - A. num_stations - Specify a different number of stations to create off of your antenna.
 - B. upstream_port - if your ethernet cable to your router is not eth1, define it using this flag. Eth1 is the default for this flag.
 - C. debug - call this flag if you want to get error messages in case anything goes wrong.

E. Your port manager will look similar to this



F. Your Layer 3 connections will look similar to this



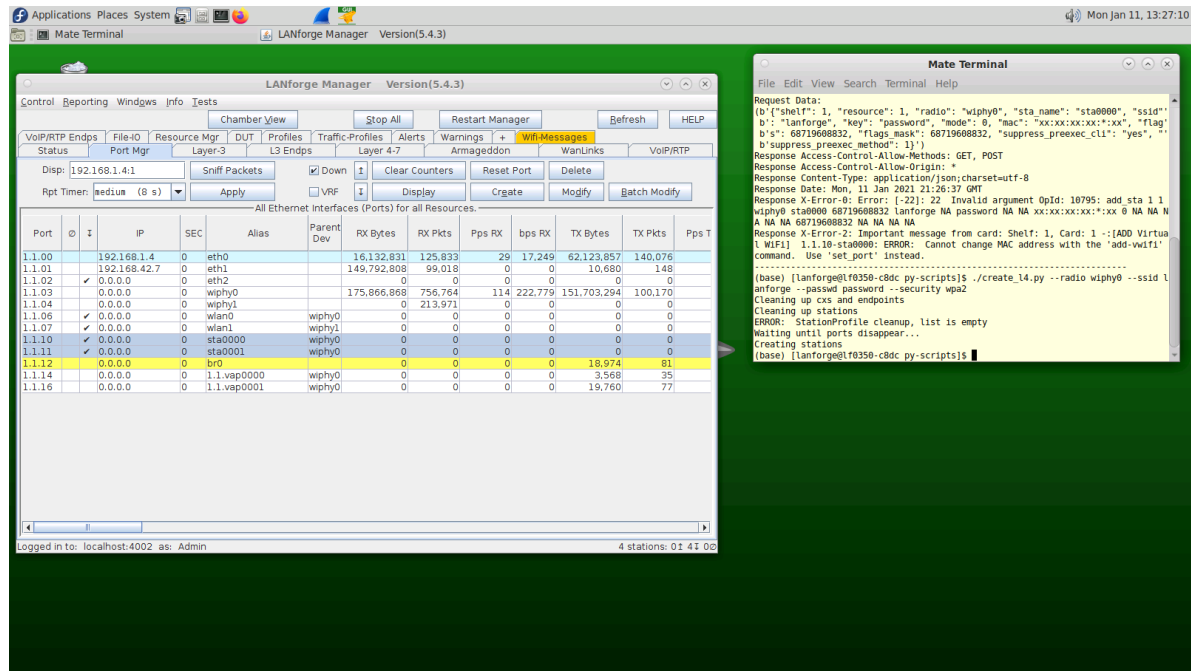
8. Layer-4 Cross Connect

- A. In your py-scripts, there is a create_l4 script which allows you to create stations in your terminal.
- B. Type

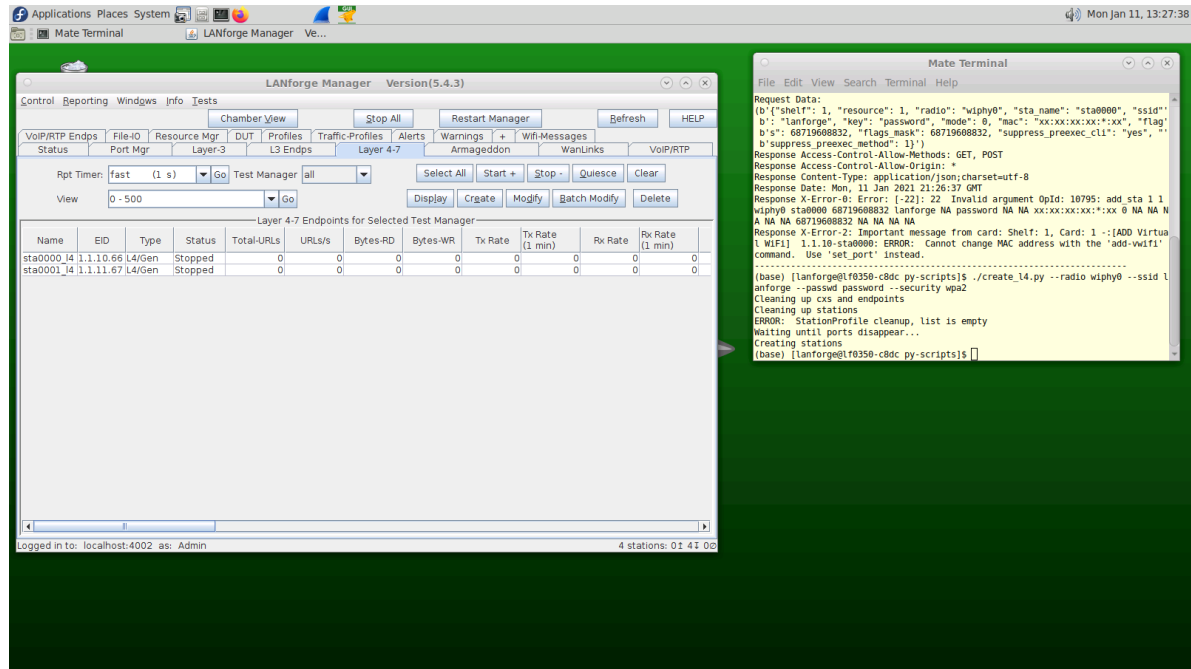

```
./create_l4.py --radio wiphy0 --ssid lanforge --passwd password --security wpa2
```

 into your terminal
- C. This will automatically create 2 stations on your Lanforge device off of your wiphy0 radio and also create a cross connect from each station to your eth1 port. You can change which port the cross connect will be connected to with the --upstream_port option.
- D. You can specify the following flags as well:
 - A. num_stations - Specify a different number of stations to create off of your antenna.
 - B. upstream_port - if your Ethernet cable to your router is not eth1, define it using this flag. Eth1 is the default for this flag.
 - C. debug - call this flag if you want detailed diagnostic information

E. Your port manager will look similar to this



F. Your Layer 4 connections will look similar to this



G. Your Netsmith display will look similar to this. The connections on this picture have been oriented for legibility.

9. Monitor and record an IPV4 variable time test. The purpose of this test is to detect whether your router is able to keep a steady signal when being barraged by multiple users.

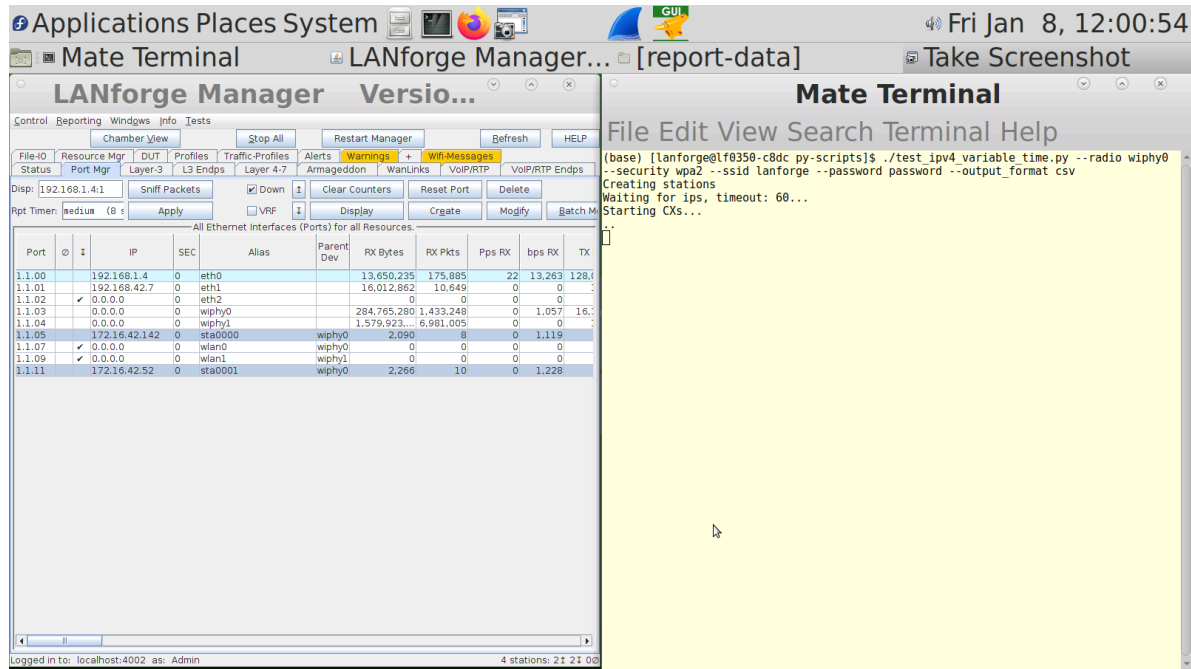
A. In the first part of this tutorial, you are going to connect various numbers of stations, record them for 1 and 10 minutes, and then save as a CSV, excel, or pickle format. A station represents a device which is connected to a network, LANforge creates representations of stations which create real traffic on your network and then records statistics on that traffic. This module determines whether your device is able to sustain a heavy load of traffic for an user defined period of time. By recording the traffic it is then possible to go back and detect where any problems occurred which allows a network manager to fix problems which could be facing your network.

- B. Navigate to the py-scripts folder and type the following command into your command line
- ```
./test_ipv4_variable_time.py --radio wiphy0 --security wpa2 --ssid lanforge --password password --output_format csv
```

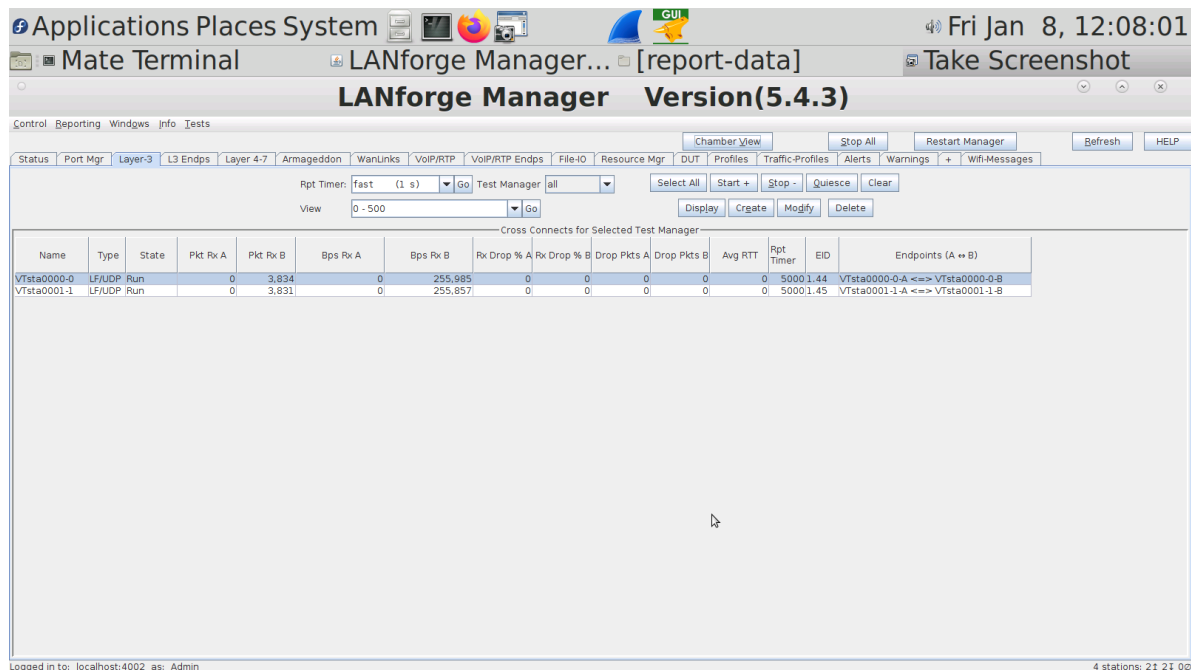
Replace the security, ssid, and password variables with the settings for the network you are testing. This will create 2 wiphy stations by default, connect them to the network you are testing, and report the results to a CSV file. You will find a file with a timestamp within the last 5 minutes in the report\_data folder in your home directory. If you are running this script from another machine using the --mgr function, you will need to define the report\_file variable.

- C. test\_ipv4\_variable\_time accepts the following flags:
- A. output\_format - The format you want to save your results to
  - B. col\_names - Which columns should be saved in the output file
  - C. test\_duration - how long you want the test to last.
  - D. report\_file - where you want the results to be stored

D. Your port manager will look similar to this



E. Your Layer 3 connections will look similar to this



F. Your Layer 3 endpoints will look similar to this

Applications Places System Fri Jan 8, 12:08:12  
 Mate Terminal LANforge Manager Versi... [report-data]  
**LANforge Manager Version(5.4.3)**

Control Reporting Windgws Info Tests Chamber View Stop All Restart Manager Refresh HELP

Status Port Mgr Layer-3 L3 Endps Layer 4-7 Armageddon WanLinks VoIP/RTP VoIP/RTP Endps File-I/O Resource Mgr DUT Profiles Traffic-Profiles Alerts Warnings + Wifi-Messages

Min PDU Size: AUTO Go Max PDU Size: Same Go  
 MIN Tx Rate: New Rate: 156 Kbps Go MAX Tx Rate: Same Go  
 View: 0 - 1000 Go

Start + Stop - Quiesce Clear  
 Display Create Modify Batch Modify Delete

| Name          | EID         | Run | Mng  | Script | Tx Rate | Tx Rate (1 min) | Tx Rate (last) | Tx Rate LL | Rx Rate | Rx Rate (1 min) | Rx Rate (last) | Rx Rate LL | Rx Drop % | Tx PDUs | Tx Pkts LL | PDU/s TX | Pps TX LL | Rx |
|---------------|-------------|-----|------|--------|---------|-----------------|----------------|------------|---------|-----------------|----------------|------------|-----------|---------|------------|----------|-----------|----|
| Vtsta0000-0-A | 1.1.1.5.62  | ✓   | None |        | 255,969 | 256,051         | 256,460        | 262,952    | 0       | 0               | 0              | 0          | 0         | 4,091   | 4,091      | 21       | 21        |    |
| Vtsta0000-0-B | 1.1.1.5.63  | ✓   | None |        | 0       | 0               | 0              | 0          | 255,930 | 255,922         | 254,603        | 263,224    | 0         | 0       | 0          | 0        | 0         |    |
| Vtsta0001-1-A | 1.1.1.11.64 | ✓   | None |        | 255,872 | 255,922         | 254,752        | 263,128    | 0       | 0               | 0              | 0          | 0         | 4,060   | 4,060      | 21       | 21        |    |
| Vtsta0001-1-B | 1.1.1.1.65  | ✓   | None |        | 0       | 0               | 0              | 0          | 255,872 | 255,922         | 254,752        | 263,224    | 0         | 0       | 0          | 0        | 0         |    |

Logged in to: localhost:4002 as: Admin 4 stations: 21 21 00

G. You can view a dynamic report of the connection creating traffic. It will look similar to this

Applications Places System Fri Jan 8, 12:07:19  
 Mate Terminal LANforge Man... [report-data] Dynamic Rep... Take Screenshot

**Dynamic Reports**

Report Graph

Endpoints: Vtsta0001-1-A, Vtsta0000-0-A  
 Ports: 1.1.1.5-sta0000, 1.1.1.11-sta0001  
 Stations: [Empty]  
 Test Groups: [Empty]

Global Stats: Select Data

Time: 2021.01.08.11:59:48 to 2021.01.08.12:07:19

Legend: Vtsta0001-1-A-Tx8bps, Vtsta0001-1-A-Rx8bps, Vtsta0000-0-A-Tx8bps, Vtsta0000-0-A-Rx8bps, 1:1sta0000-Tx8bps, 1:1sta0000-Rx8bps, 1:1sta0001-Tx8bps, 1:1sta0001-Rx8bps

Auto Scale:  A  B  Position Label  Pause Load Auto Adjust Adjust Print Close