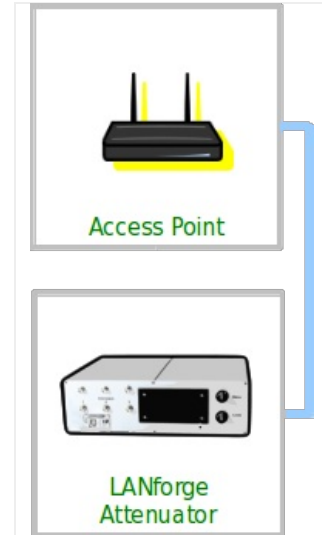


Scripting a Standalone CT703 or CT704 Attenuator

Goal: Operate a CT703 or CT704 WiFi Attenuator with a script.

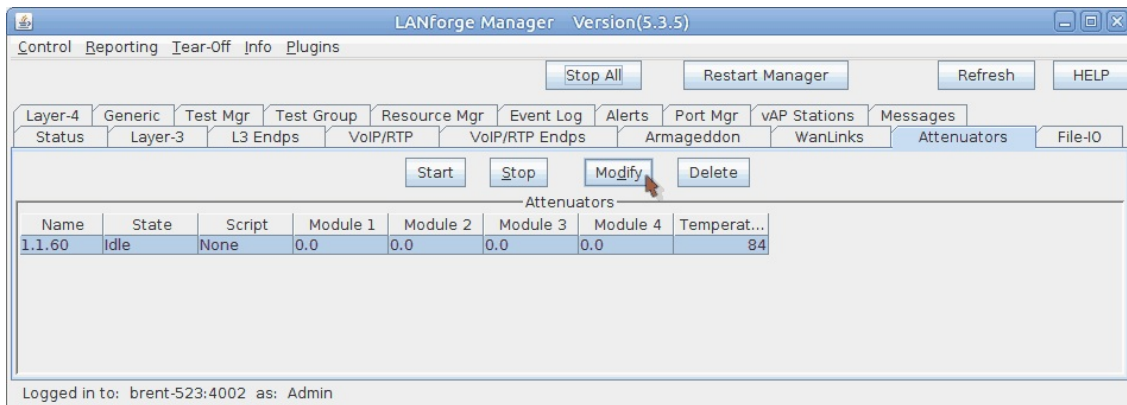
The LANforge GUI provides scripting support for the CT703 and CT704 Attenuators. This cookbook provides a basic example of how to script the signal strength up and down.

Requires LANforge 5.2.11+ and CT703 or CT704 Attenuator.

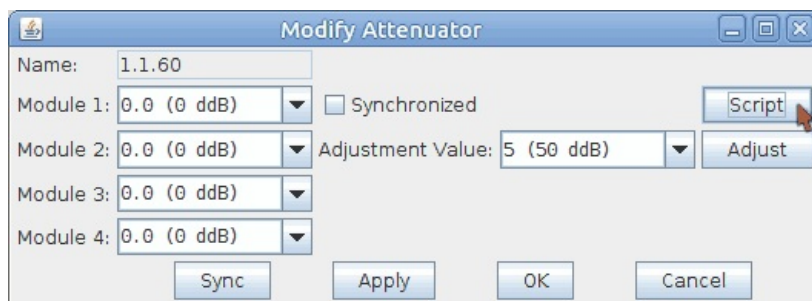


1. Create an Attenuator Script

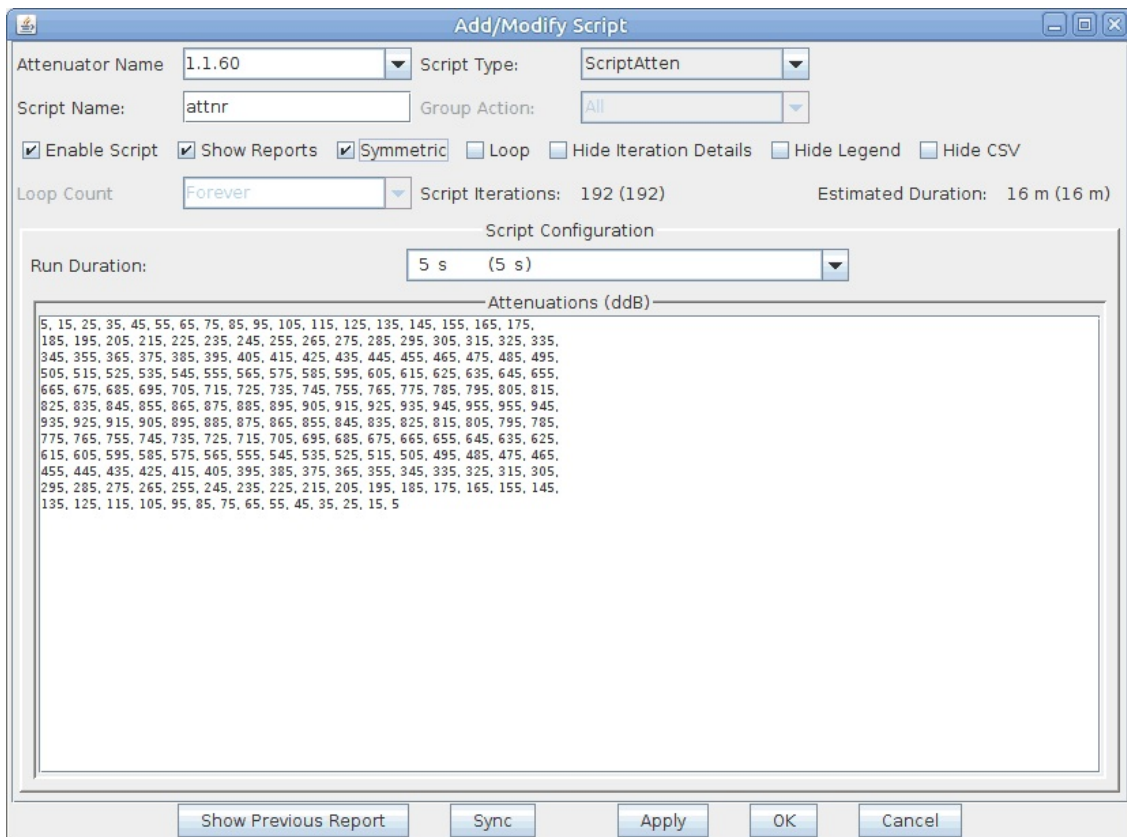
- A. In the **Attenuators** tab, select your attenuator and click **Modify**



- B. You will see the Modify Attenuator window. Click on the **Script** button.



- C. The Add/Modify Script window opens. In the picture below you see a huge list of numbers (the attenuation levels). These numbers are not pre-populated. You can copy and paste them out of this document or create a series with other commands listed below.

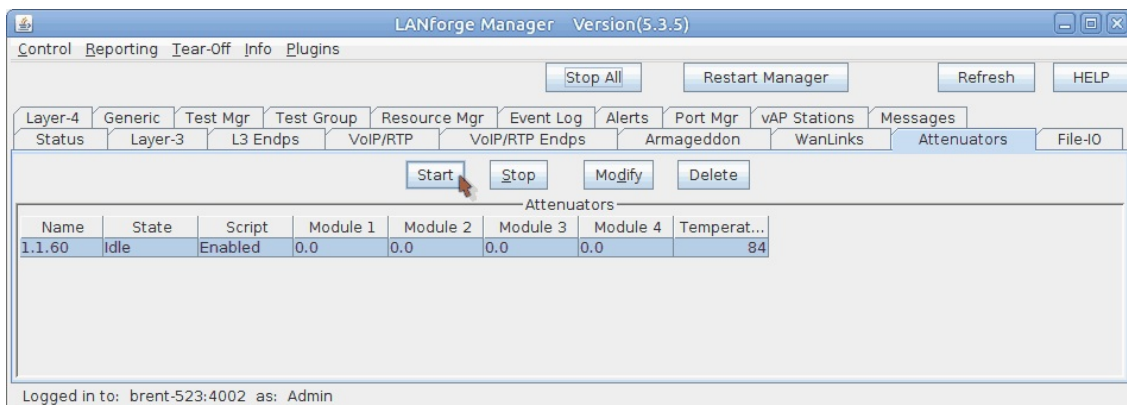


- A. In the Script Type pulldown, select **ScriptAtten**
- B. Type in the name for the script, this example is called **attnr**
- C. Select **Symmetric**
- D. Choose **5 s** for Run Duration. This will run the Attenuator at each ddB value for this period of time.
- E. Enter the following attenuation values for a 16 minute long test. This will send the attenuator from 5 to 955ddB and back:

F. 5, 15, 25, 35, 45, 55, 65, 75, 85, 95, 105, 115, 125, 135, 145, 155, 165, 175, 185, 195, 205, 215, 225, 235, 245, 255, 265, 275, 285, 295, 305, 315, 325, 335, 345, 355, 365, 375, 385, 395, 405, 415, 425, 435, 445, 455, 465, 475, 485, 495, 505, 515, 525, 535, 545, 555, 565, 575, 585, 595, 605, 615, 625, 635, 645, 655, 665, 675, 685, 695, 705, 715, 725, 735, 745, 755, 765, 775, 785, 795, 805, 815, 825, 835, 845, 855, 865, 875, 885, 895, 905, 915, 925, 935, 945, 955, 955, 945, 935, 925, 915, 905, 895, 885, 875, 865, 855, 845, 835, 825, 815, 805, 795, 785, 775, 765, 755, 745, 735, 725, 715, 705, 695, 685, 675, 665, 655, 645, 635, 625, 615, 605, 595, 585, 575, 565, 555, 545, 535, 525, 515, 505, 495, 485, 475, 465, 455, 445, 435, 425, 415, 405, 395, 385, 375, 365, 355, 345, 335, 325, 315, 305, 295, 285, 275, 265, 255, 245, 235, 225, 215, 205, 195, 185, 175, 165, 155, 145, 135, 125, 115, 105, 95, 85, 75, 65, 55, 45, 35, 25, 15, 5

G. ...click **OK**

- D. In the Attenuators tab, you will notice that your attenuator now reads **Enabled** in the Script column. Select the attenuator and click the **Start** button.



- E. The window Script Report will appear. This monitors the script behavior of the attenuator script.

