

Installing the Arduino Mega Driver on Windows 10

Goal: Installing the the Arduino Mega device driver on Windows 10.

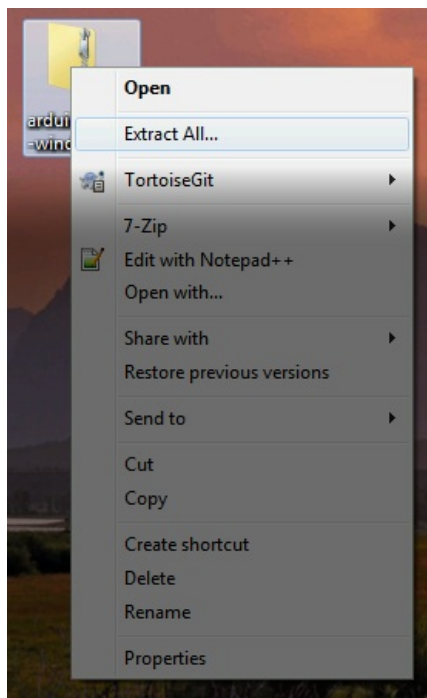
LANforge CT70x attenuators require recently signed Arduino drivers. The automatic driver install process for Windows 10 might automatically install a Microsoft Windows version of the Arduino Mega driver. This is not the driver LANforge expects. These instructions will guide you how through uninstalling an old driver and installing the new driver from the Arduino website.

i If you have recently removed a driver, you might need to reboot your Windows system for it to complete the driver installation process.

1. You want to install the windows version of the LANforge Server beforehand. For more information see [Installing LANforge Server on Windows](#)
2. Follow the link to the Arduino project to download the latest driver :[Download Arduino IDE](#)



3. Download the Arduino IDE zip file to your desktop. Use **Right-click**→**Extract All...** to expand the contents to a folder on your desktop.

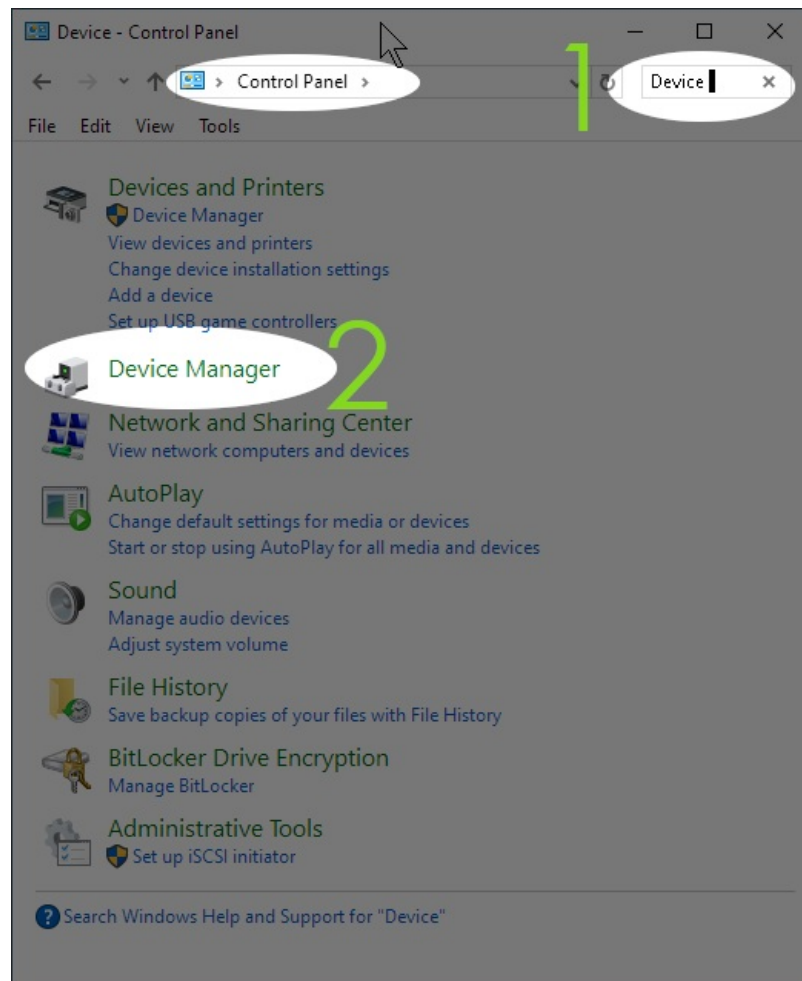


4. This process requires you to operate the Control Panel as Administrator.

5. Getting to the **Device Manager**

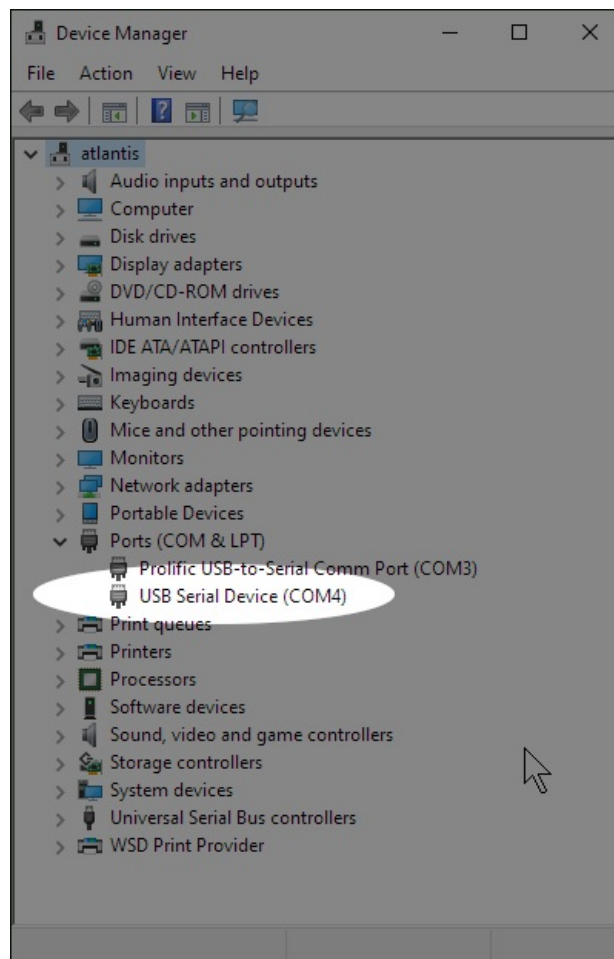
A. Type **Control-F** for Find

B. Search for **Device**



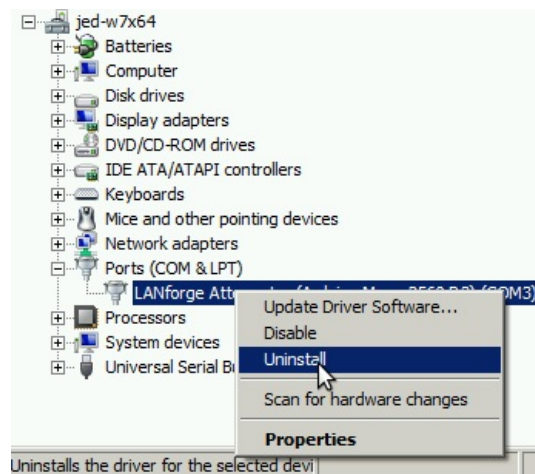
C. Select **Device Manager**

D. In the Device Manager window, right-click on the computer and select **Scan for hardware changes**

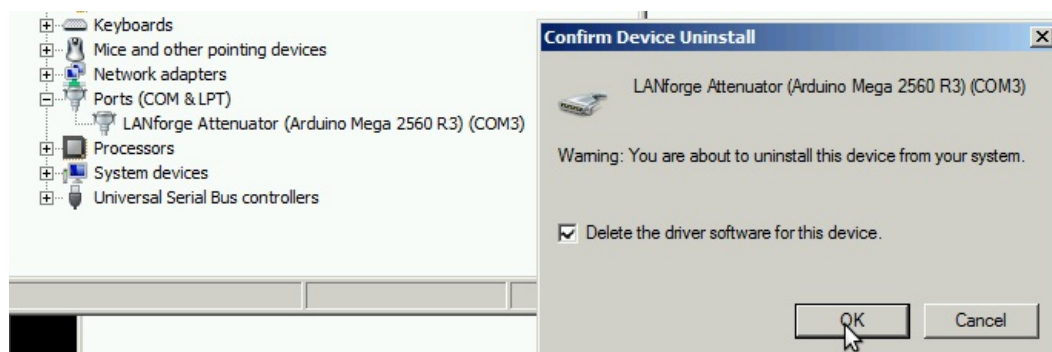


6. If you find a previously installed driver, uninstall it. Especially if this is labeled **Windows Arduino Mega**

A. Right-click → **Uninstall**



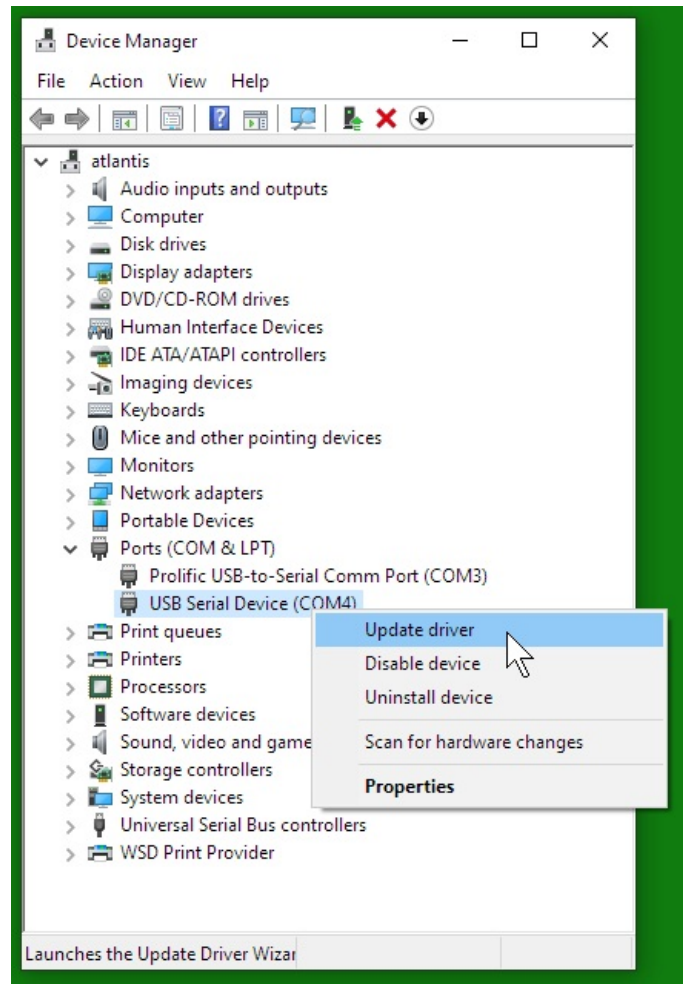
B. Select Delete the driver software for this device, and click **OK**



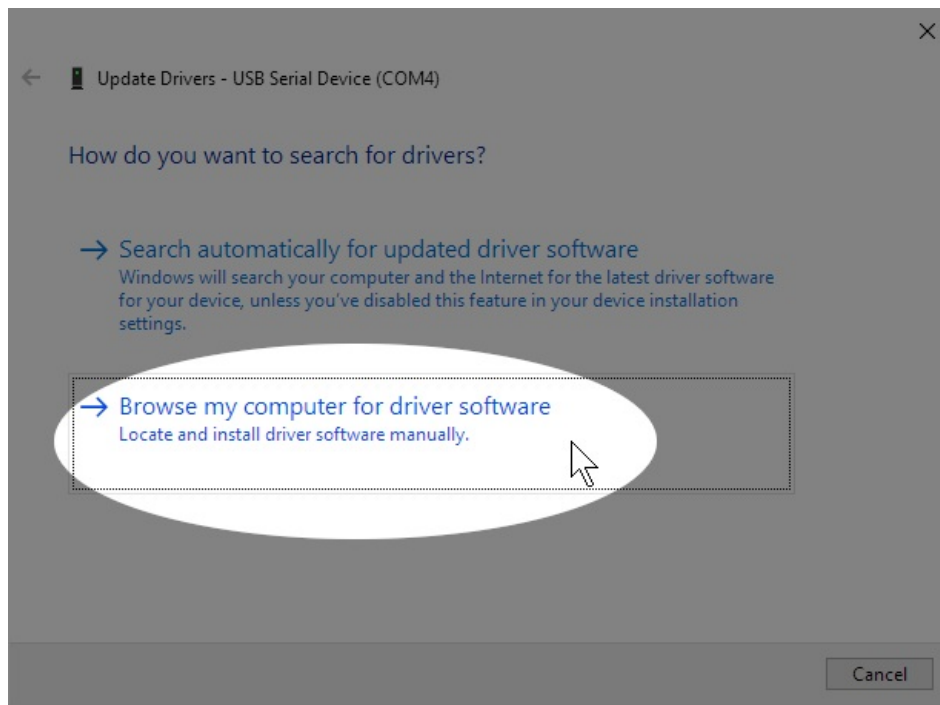
- C. Right-click on the computer, and select **Scan for Hardware Changes**
- D. You might need to un-plug and plug-in your Attenuator.
- E. If the right-click options menu does not allow you to change drivers, reboot your system.

7. Install the Arduino IDE Driver

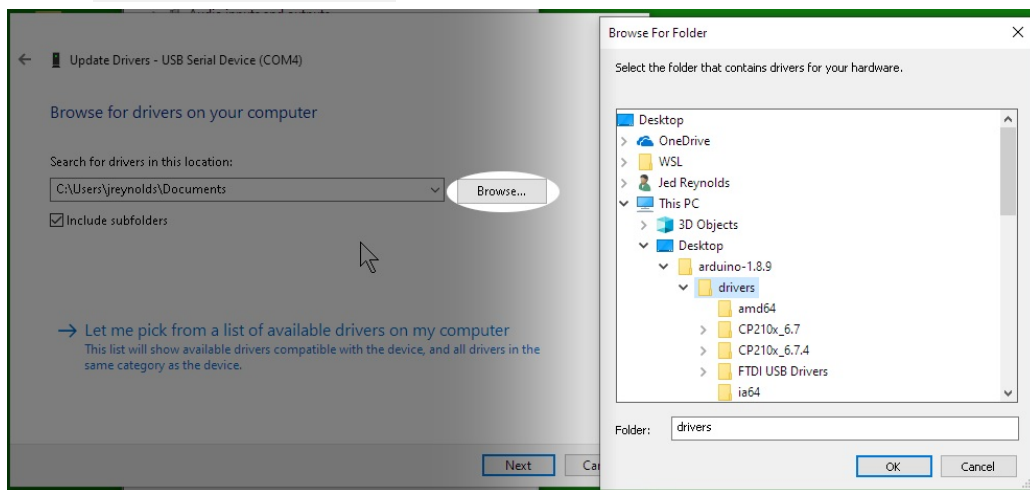
- A. In **Device Manager**, you want right-click on the **Unknown Device** and select **Update Driver Software...**



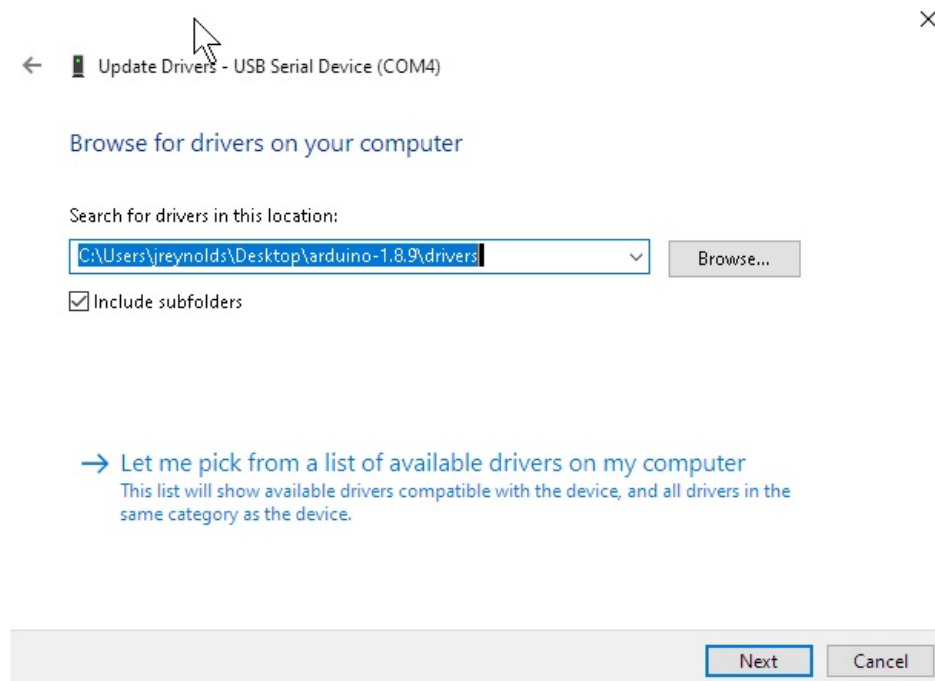
- B. Select **Browse my computer for driver software:**



A. Browse to Desktop\arduino-1.8.9\drivers and click **OK**



B. Click **Next**




C. You will see the Update Driver Software confirmation. Click **Close**.



←  Update Drivers - Arduino Mega 2560 (COM4)

Windows has successfully updated your drivers

Windows has finished installing the drivers for this device:

 Arduino Mega 2560



Close

C. You should not need to reboot your system in order to run the Attenuator.

Candela Technologies, Inc., 2417 Main Street, Suite 201, Ferndale, WA 98248, USA
www.candelatech.com | sales@candelatech.com | +1.360.380.1618