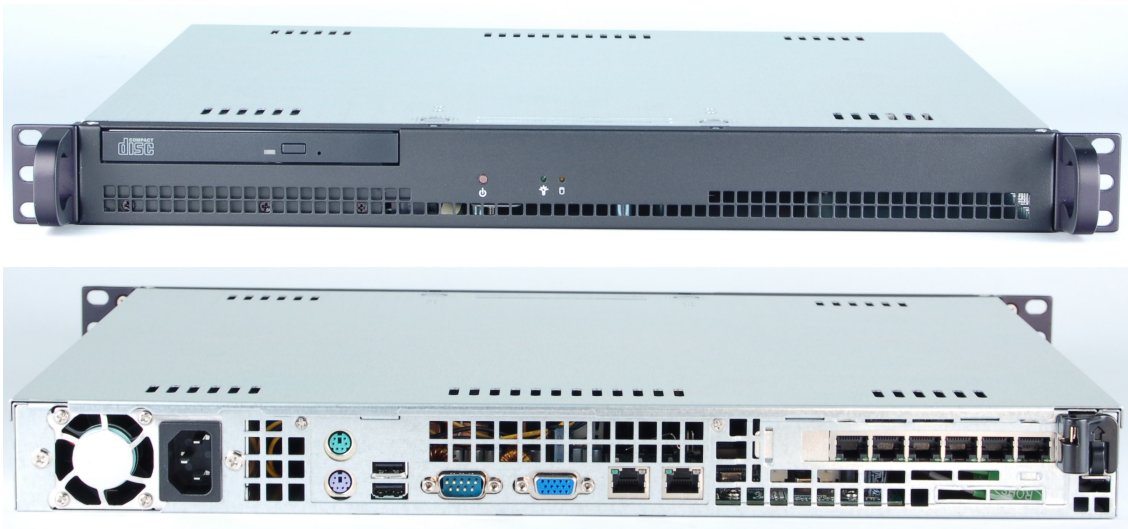


CT505-30 LANforge-FIRE VoIP Call Generator

The CT505-30 supports SIP VOIP calls, including RTP data-stream generation. It can make 30 calls to itself (60 VoIP soft phones) per chassis. The CT505-30 is excellent for testing whether or not an existing infrastructure can handle increased VoIP call load, and can also be used to test SIP gateways and other infrastructure. The CT505-30 uses the MAC-VLAN feature to allow one virtual interface per phone, so each phone can use a unique IP address and use standard SIP protocol ports. Normal LANforge-FIRE traffic generation features (Ethernet, UDP, TCP, HTTP, etc) is also supported by the CT505-30 at no additional charge. The POLQA and PESQ automated quality scoring modules are included.

The CT505-30 1U rackmount chassis fits into a standard rack and is only 14 inches deep. It supports standard VGA, Keyboard, and Mouse interfaces for easy console/desktop access to the system. The rackmount chassis is relatively noisy, so it is better for a data center deployment than a desktop environment. Other form factors better suited for traveling or desktop use are also available at similar prices and performance. More powerful systems are also available and multiple LANforge systems can be clustered together into a single managed realm for increased call capacity. No additional hardware or software is required, but you may wish to manage the system using the LANforge-GUI on a separate machine.

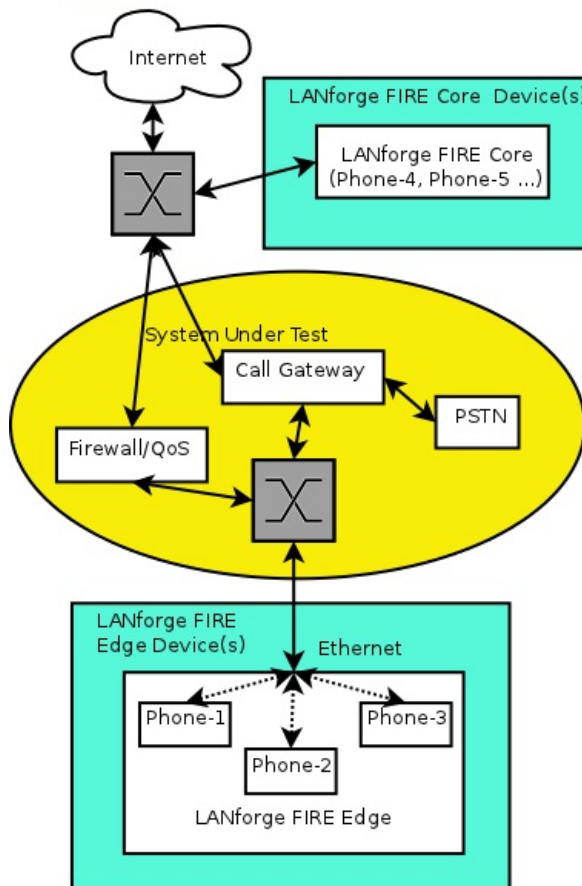


NOTE: This product may have a different hardware configuration than the system pictured above.
Refer to your official quote for details.

Example Network Diagram



LANforge FIRE Traffic Generator.



LANforge FIRE supports multiple Ethernet and Virtual interfaces. To the System Under Test, it appears as if each interface is a separate PC or network appliance generating independent stateful traffic streams.

Thousands of 802.1Q and MAC-VLAN virtual interfaces are supported. LANforge can send traffic between any two interfaces, including two interfaces on the same machine. Each physical and virtual interface can be configured on the same, or on different IP subnets. Each interface has its own IP-Port space, so each call can be on the standard ports (5060 for SIP).

In the configuration on the left, the LANforge FIRE Core can be one interface and act as one side of the call. The LANforge FIRE Edge can be other interfaces on the same system. It is also valid to use multiple LANforge systems configured to act as a single realm. Using multiple systems can increase total capacity and is necessary when endpoints are physically far apart.

Candela Technologies Inc., 2417 Main Street, Suite 201, P.O. Box 3285, Ferndale, WA 98248, USA
www.candelatech.com | sales@candelatech.com | +1 360 380 1618

Quick Start Guide

1. Connect Management ethernet port to Management network or management PC. If connecting directly to a PC, an ethernet cross-over cable should be used. Or, connect VGA, Keyboard, and Mouse to the chassis and manage it locally.
2. Connect one or more traffic generating ports to the downstream side of the device under test. This usually is considered the 'client' side of the network.
3. Connect one or more traffic generating ports to the upstream side of the device under test.
4. Connect power plug to a standard US or European AC power source.
5. If managing remotely, install the LANforge-GUI on a separate management PC or Laptop. Windows and Linux GUIs are supported: Select the correct one from the CDROM or Candela Technologies Download page and install it.
6. The CT505-30 should now boot. If DHCP is enabled on the Management network, the CT505-30 will automatically acquire an IP address. If DHCP is not available, the IP address will be set to 192.168.1.101

by the LANforge scripts.

7. Start the LANforge-GUI on the management PC, or the CT505-30 console if managing locally, and click the 'Discover' button. It should find the CT505-30 appliance and add the IP address to the drop-down box in the Connect widget. Press 'Connect' and you will be connected to the CT505-30.
8. Select the Layer 3, Layer 4 and other LANforge-FIRE related tabs in the GUI to see existing traffic connections and to modify them or add new ones. You can also view a real-time report of the test with the 'Display' button for some traffic types.
9. LANforge can send Layer 3 traffic types between any two physical ports, so one can send traffic between port eth0 and eth1, eth0 and eth2, eth3 and eth4, etc. Use the Port Mgr tab in the GUI to configure the IP addresses for the interfaces as appropriate for your network and cabling.
10. Any modifications take place immediately after you click 'Submit'.

Candela Technologies Inc., 2417 Main Street, Suite 201, P.O. Box 3285, Ferndale, WA 98248, USA
www.candelatech.com | sales@candelatech.com | +1 360 380 1618

LANforge-FIRE VoIP Call Generator Related Images

VoIP/RTP Main

The screenshot displays the LANforge Manager Version(5.4.7) interface. The 'VoIP/RTP' tab is selected, showing a configuration panel with 'Rpt Timer' set to 'fast (1 s)' and 'Test Manager' set to 'all'. Below the configuration, a table titled 'Cross Connects for Selected Test Manager' shows a single test entry: 'VoIP-Test' with a state of 'In progress'. The table columns include Name, Type, State, Pkt Tx A → B, Pkt Tx A ← B, Bps Rx B, Bps Rx A, Rx Drop % A, Rx Drop % B, Delay A → B, Delay A ← B, Jitter A → B, Jitter A ← B, Rpt Timer, EID, and Endp.

Name	Type	State	Pkt Tx A → B	Pkt Tx A ← B	Bps Rx B	Bps Rx A	Rx Drop % A	Rx Drop % B	Delay A → B	Delay A ← B	Jitter A → B	Jitter A ← B	Rpt Timer	EID	Endp
VoIP-Test	SIP/G.711U	In progress	1,157	1,157	45,662	45,662	0.432	0.086	0	0	0	0	01,000	17....	VoIP-Tes

Logged in to: 192.168.100.180:4002 as: Admin

VoIP/RTP Cross Connect

Create/Modify Cross Connect

Cross Connect Information

CX Name: VoIP-Test Rpt Timer: fast (1 s) Test Manager: default_trn CX Type: Voice - SIP

Multi-Call Directed Min Call Duration (s): File Max Ring Time (s): 20 Codec: G.711u

Continuous Call Use Gateway Max Call Duration (s): File Min Inter-Call Gap (s): 3 Start Delay: 3

Don't Send RTP Number Of Calls: INFINITE Max Inter-Call Gap (s): 3 Quiesce: 45 (45 sec)

TX Endpoint (endpoint A)

Endp Name: VoIP-Test-A UnManaged Bind SIP UDP Port: AUTO Tx File: media/AmEnglish_NB_m1s1_f2s2_8s.wav

Shelf: 1 Don't Answer Record SIP Port: 5060 Destination: AUTO

Resource: 1 (sk81) Rcv Call Enable Scoring IP To's: Best Effort (0) Phone #: AUTO

Port: 29 (rddVR0) No Tunneling Play to speaker Socket Priority: 0 Call Gateway: AUTO

IP Addr: AUTO No Fast Start VAD VAD Delay(ms): 250 Record File: AUTO

Auth User Name: AUTO Single Codec Override SDP VAD Force Send: 3000 Scoring Server: 127.0.0.1:3998

Display Name: AUTO Mobile Play Audio Jitter Buffer: 8 Quiesce: 45 (45 sec)

Bluetooth Reg Expire: 300 Speaker: /dev/audio

RX Endpoint (endpoint B)

Endp Name: VoIP-Test-B UnManaged Bind SIP UDP Port: AUTO Tx File: media/AmEnglish_NB_m1s1_f2s2_8s.wav

Shelf: 1 Don't Answer Record SIP Port: 5060 Destination: AUTO

Resource: 1 (sk81) Rcv Call Enable Scoring IP To's: Best Effort (0) Phone #: AUTO

Port: 30 (rddVR1) No Tunneling Play to speaker Socket Priority: 0 Call Gateway: AUTO

IP Addr: AUTO No Fast Start VAD VAD Delay(ms): 250 Record File: AUTO

Auth User Name: AUTO Single Codec Override SDP VAD Force Send: 3000 Scoring Server: 127.0.0.1:3998

Display Name: AUTO Mobile Play Audio Jitter Buffer: 8 Quiesce: 45 (45 sec)

Bluetooth Reg Expire: 300 Speaker: /dev/audio

Buttons: Apply, OK, Refresh, Batch-Create, Cancel

VoIP/RTP MOS Report

LANforge Manager Version(5.4.7)

Control Reporting Windows Info Tests

Chamber View Stop All Restart Manager Refresh HELP

Serial Spans PPP-Links vAP Stations DUT Profiles Traffic-Profiles Event Log Alerts Messages Warnings +

VoIP/RTP Ends Attenuators RF-Generator File-I/O Generic Test Mgr Connection Group Collision-Domains Resource Mgr

Status Port Mgr Extended Port Mgr Layer-3 L3 Ends Layer 4-7 Armageddon WanLinks VoIP/RTP

View 0 - 20000 Go Clear Delete Batch Modify

All Endpoints

Name	State	Reg State	MOS-LQO#	MOS-LQO	Attenuation (AGC)	Avg Delay	SNR Ref	SNR Deg	Scoring Bkkg	Tx Pkts	Rx Pkts	Tx Bytes	Rx Bytes	Dropped	OOO Pkts	Dup
VoIP-Test-B	In progress	Unreg	9	4.44	-0.006	0.0	41.3	41.3	0	4,277	4,270	684,320	683,200	0	0	0
VoIP-Test-A	In progress	Unreg	0	0	0	0	0	0	0	4,277	4,258	684,320	681,280	0	0	0

Logged in to: 192.168.100.180:4002 as: Admin

Candela Technologies Inc., 2417 Main Street, Suite 201, P.O. Box 3285, Ferndale, WA 98248, USA
 www.candelatech.com | sales@candelatech.com | +1 360 380 1618

Software Features

LANforge VoIP/RTP Call Generator Feature Highlights.

1. SIP protocol used for call management.
 1. SIP over UDP is supported on both Windows and Linux.

2. Can use directed mode, where VoIP phones call directly to themselves.
 3. Can also use Gateway mode where the VoIP phones register with a SIP gateway.
 4. SIP authentication is supported.
2. RTP protocol used for streaming media transport, and supports the following CODECS. More codecs may be supported in the future.
 1. G.711u: 64 kbps data stream, 50 packets per second.
 2. Speex: 16 kbps data stream, 50 packets per second, www.speex.org (Linux ONLY).
 3. G.726-16: 16 kbps data stream, 50 packets per second.
 4. G.726-24: 24 kbps data stream, 50 packets per second.
 5. G.726-32: 32 kbps data stream, 50 packets per second.
 6. G.726-40: 40 kbps data stream, 50 packets per second.
 7. G.729a: 8 kbps data stream, 50 packets per second.
 8. NONE: A messaging-only configuration is supported.
 3. Supports POLQA and PESQ automated voice quality testing.
 4. RTCP protocol used for streaming media statistics (SIP only).
 5. Each LANforge VoIP/RTP endpoint can play from a wav file and record to a separate wav file. Almost any sound file can be converted to the correct wav file format with tools bundled with LANforge. Sample voice files are included.
 6. Current benchmarks show support for 280 or more emulated VoIP phones per high-end machine.
 7. LANforge VoIP/RTP endpoints can call other LANforge endpoints or third party SIP phones like Cisco and Grandstream. Third party phones can also call LANforge endpoints and hear the WAV file being played.

Candela Technologies Inc., 2417 Main Street, Suite 201, P.O. Box 3285, Ferndale, WA 98248, USA
www.candelatech.com | sales@candelatech.com | +1 360 380 1618

LANforge VoIP/RTP Call Generator Feature Highlights.

1. Supports real-world protocols:
 1. Layer 2: Raw-Ethernet.
 2. 802.1Q VLANs.
 3. PPPoE: Integrated PPPoE support.
 4. Layer 3: IPv4, IPv6, UDP/IP, IGMP Multicast UDP, TCP/IP.
 5. Layer 4-7: FTP, HTTP, HTTPS, TFTP, SFTP, SCP
 6. Layer 4-7: VOIP Call Generator (SIP, RTP, RTCP).
 7. Layer 4-7: TELNET, PING, DNS, SMTP, NMAP (via add-on script).
 8. File-IO: NFSv3, NFSv4, CIFS, iSCSI.
2. Supports up to 1000 concurrent TCP connections with base license package.
3. The CT505-30 is able to support 30 calls and 1Gbps or more of regular network traffic, depending on protocol mix and speed of the network under test. The portable chassis configurations may run at different speeds than the 1U rackmount systems.
4. Supports real-world compliance with ARP protocol.
5. Supports ToS (QoS) settings for TCP/IP and UDP/IP connections.
6. Uses publicly available Linux and Windows network stacks for increased standards compliance.
7. Utilizes [libcurl](#) for FTP, HTTP and HTTPS (SSL), TFTP and SCP protocols.
8. Supports file system test endpoints (NFS, CIFS, and iSCSI file systems, too!). File system mounts can use the virtual interface feature for advanced testing of file server applications.
9. Supports custom command-line programs, such as telnet, SMTP, and ping.

10. Comprehensive traffic reports include: Packet Transmit Rate, Packet Receive Rate, Packet Drop %, Transmit Bytes, Receive Bytes, Latency, Jitter, various Ethernet driver level counters, and much more.
11. Supports generation of reports that are ready to be imported into your favorite spread-sheet.
12. Allows packet sniffing and network protocol decoding with the integrated **Wireshark** protocol sniffer.
13. GUI runs as Java application on Linux, MAC and Microsoft Operating Systems (among others).
14. GUI can run remotely, even over low-bandwidth links to accommodate the needs of the users.
15. Central management application can manage multiple units, tests, and testers simultaneously.
16. Includes easy built-in scripting for iterating through rates and packet sizes, with automated reporting. Also supports scriptable command line interface (telnet) which can be used to automate test scenarios. Perl libraries and example scripts are provided!
17. Automatic discovery of LANforge data generators simplifies configuration of LANforge test equipment.
18. LANforge traffic generation/management software is supported on Linux and MS Windows.

Candela Technologies Inc., 2417 Main Street, Suite 201, P.O. Box 3285, Ferndale, WA 98248, USA
www.candelatech.com | sales@candelatech.com | +1 360 380 1618

Hardware Specification

1. Mid-Range 1U rackmount server.
2. Operating System: Fedora Linux with customized Linux kernel.
3. Up to 6 PCIe Intel Pro/1000 10/100/1000 Ethernet ports. Additional 10/100/1000 Ethernet interface for management.
4. High-availability Ethernet hardware bypass option available.
5. 2.8 GHz or higher Pentium processor.
6. One PCIe slot.
7. 1 GB or more RAM.
8. 40 GB or larger Hard Drive.
9. Solid State Drive option available.
10. Standard US or European power supply (automatically detects EU v/s US power).
11. Weight: 18 lbs or 8.2 kg.
12. Dimensions: 17 x 14 x 1.75 inches (14-inch deep 1U rackmount server) Metric: 432 x 356 x 44 mm.
13. ROHS compliant.

Additional Feature Upgrades

Unless otherwise noted in the product description, these features usually cost extra:

- WanPaths (LANforge-ICE feature set)
- Virtual Interfaces: MAC-VLANs, 802.1Q VLANs, WiFi stations, etc
- FIRE Connections: Base FIRE license includes 1000 active connections.
- LANforge-ICE Network Emulation.
- VOIP: Each concurrent call over the included package requires a license.
- **VoIP-Mobile Audio Quality Testing using POLQA/PESQ.**
- **Mobile-Mobile Audio Quality Testing using POLQA/PESQ.**
- Armageddon: Each pair of ports requires a license if not already included.
- **RF Chambers for WiFi testing.**

- External battery pack: 12+ hours for CT520, CT523, CT92X and other platforms.

Candela Technologies Inc., 2417 Main Street, Suite 201, P.O. Box 3285, Ferndale, WA 98248, USA
www.candelatech.com | sales@candelatech.com | +1 360 380 1618

Last modified: Fri Apr 12 15:32:55 PDT 2024