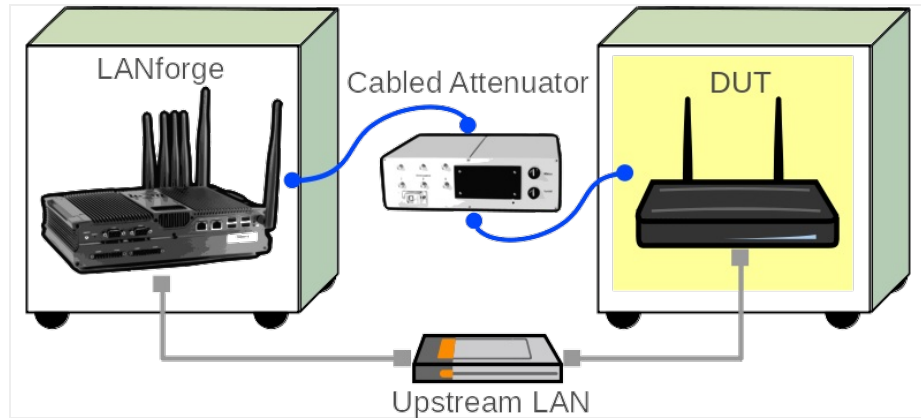


Testing Rate vs Range throughput for a WiFi Device

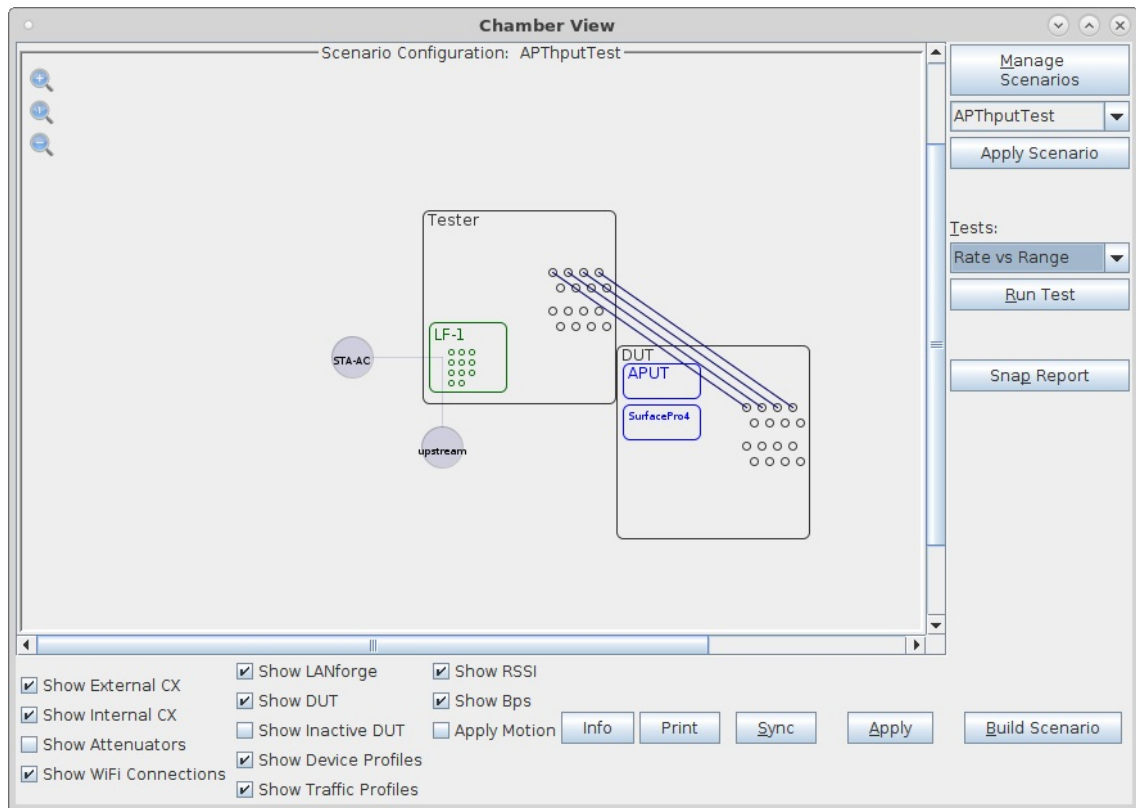
Goal: Setup and run a Rate vs Range test for an AP using the LANforge CT523c or similar system in order to test how well the AP can transmit packets at different signal levels. This is a good test of the AP's rate-control logic, as well as tx power and general ability to deal with various RF conditions. This emulates a throughput test as the user walks away from the AP.

In this test scenario, the LANforge CT523c is used to generate packets on the Ethernet port towards the wired side of the AP. The AP will then transmit the frames to the LANforge WiFi station. This example assumes you have some experience with Chamber View, and that you have a LANforge system, a programmable attenuator like the CT704b and two isolation chambers like the CT820a. The AP should be in one chamber, the LANforge system is in the other chamber, and the Attenuator is cabled between them. This feature is in LANforge version 5.3.9 and higher.



1. Configure Chamber View for Rate vs Range and Similar Tests.

- A. Open Chamber View by clicking on the 'Chamber View' button in the LANforge-GUI. If you have an appropriate scenario already created, then skip to the next section, otherwise you will need to build a scenario that matches your system. You can right-click in Chamber View to create various objects.



- B. Create a Device Under Test (DUT) Profile that matches your AP. The BSSID is important to be configured so that LANforge knows when it is connected to the correct AP.

The screenshot shows the 'Create/Modify DUT' dialog box. The fields are filled with the following values:

Name	APUT	Image file	
SW Info	v5.62.1	HW Info	
Model Number	AP640	Serial Number	234-23-sd-35
Serial port		WAN	
LAN		API version	0
SSID-1	labap	Password-1	Lanforge12345!
SSID-2		Password-2	
SSID-3		Password-3	
Mgt IP	0.0.0.0	Ant-1	0
Ant-2	0	Ant-3	0
BSSID-1	78:d2:94:bf:16:43	BSSID-2	00:00:00:00:00:00
BSSID-3	00:00:00:00:00:00	<input checked="" type="checkbox"/> Active	<input checked="" type="checkbox"/> AP DUT
<input type="checkbox"/> STA DUT	<input type="checkbox"/> WEP	<input type="checkbox"/> WPA	<input checked="" type="checkbox"/> WPA2
<input type="checkbox"/> WPA3	<input checked="" type="checkbox"/> Provides DHCP on LAN	<input type="checkbox"/> Provides DHCP on WAN	

Notes: [Empty text area]

Buttons: Apply, OK, Cancel

E. Configure an Upstream profile using eth1 on the LANforge system.

Create/Modify Profile

Name: Type:

Mode: Antennas:

Instances: Frequency:

SSID:

Pattern:

DHCP Server WEP

WPA WPA2 WPA3 802.11r

802.1x EAP-TTLS Restart DHCP on Connect

Notes:

F. Configure an STA profile on the LANforge system.

Create/Modify Profile

Name: Type:

Mode: Antennas:

Instances: Frequency:

SSID:

Pattern:

DHCP Server WEP

WPA WPA2 WPA3 802.11r

802.1x EAP-TTLS Restart DHCP on Connect

Notes:

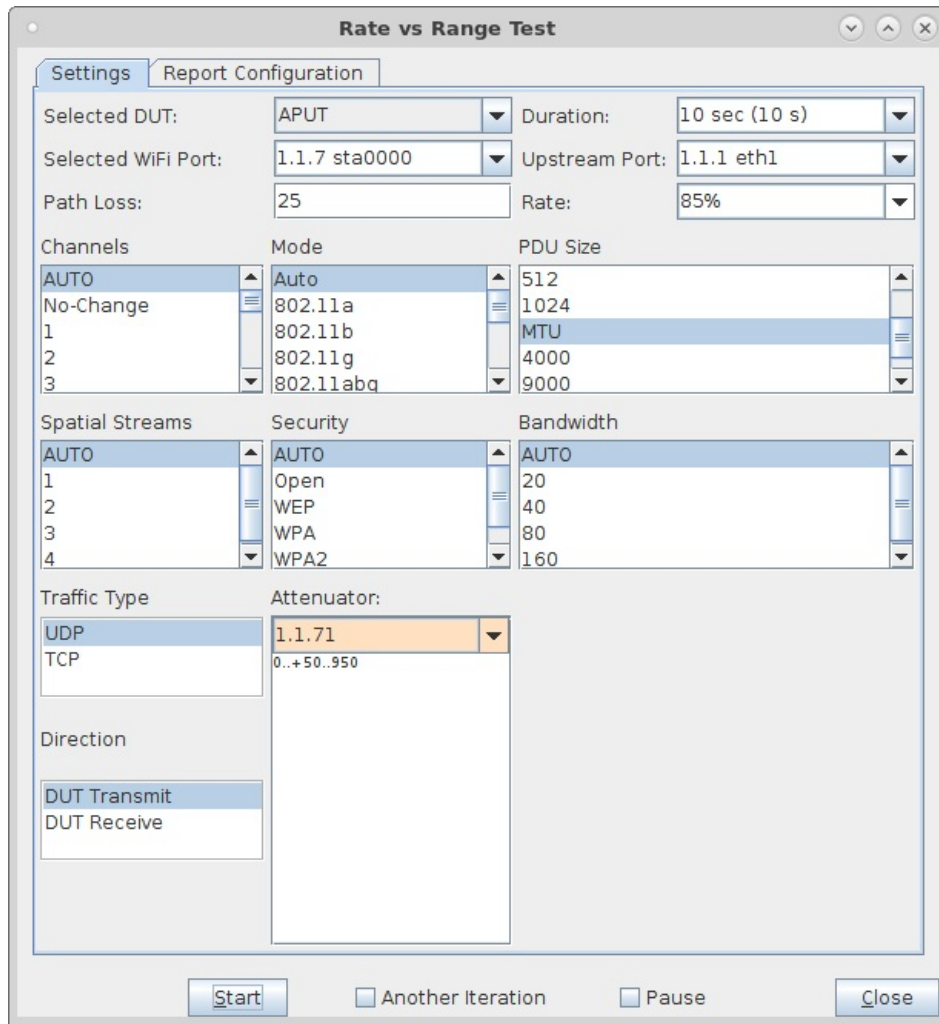
G. Configure a Chamber View Scenario and add the STA profile (mapped to desired wiphyX radio and DUT). Add an upstream profile mapped to DUT LAN side (or possibly WAN side if that is more appropriate for your DUT).

Create/Modify Scenario

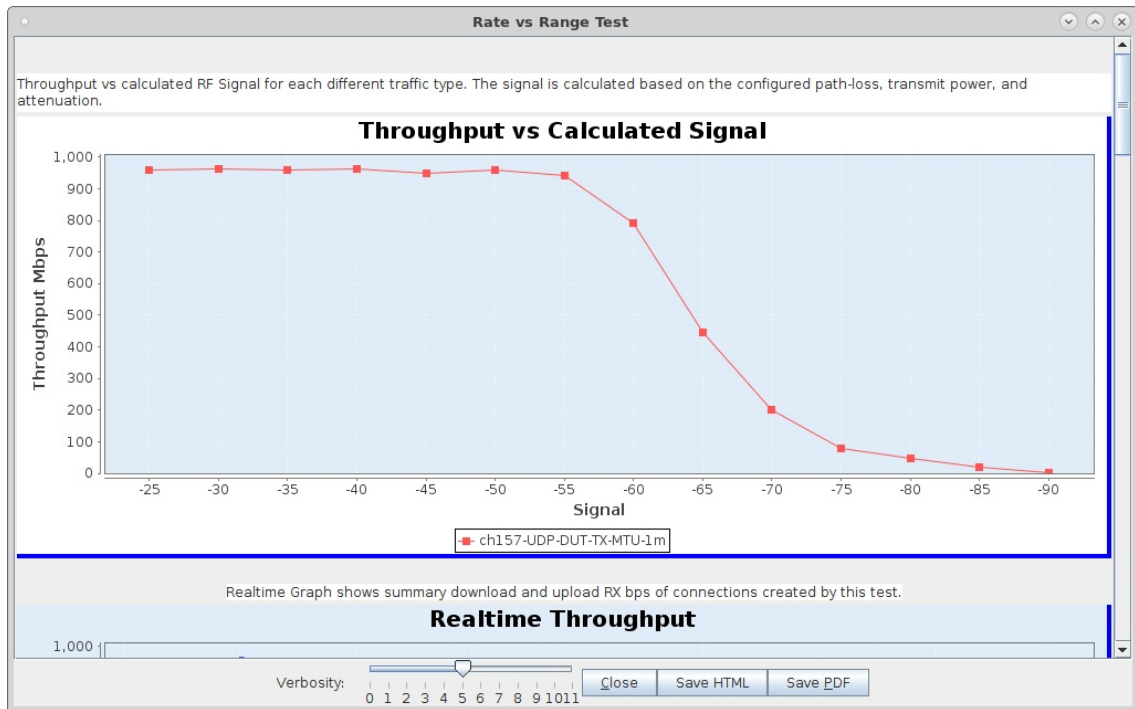
Scenario Name:

Del	Resource Profile	Mod Amount	Uses-1	Uses-2	Frequency	Maps To	Traffic-1	Traffic-2	Traffic-3
<input checked="" type="checkbox"/>	1.1 STA: STA-AC	<input type="text" value="1 (1)"/>	wiphy0	AUTO	157 (5785 Mhz)	DUT: APUT Radio-1	udp-down	udp-up	NA
<input checked="" type="checkbox"/>	1.1 Upstream: upstream	<input type="text" value="1 (1)"/>	eth1	AUTO	AUTO (-1 Mhz)	DUT: APUT LAN	NA	NA	NA

2. Use Chamber View to run a Rate vs Range test.



- C. When the configuration is complete, click the **Start** button (which will change to 'Stop' once start is clicked) to start the test. An interactive report window will be created and will be updated as the test runs.



- D. When the test is complete, click the **Save HTML** button to save an HTML report and generate the PDF. The PDF file will be linked from the HTML page. You can also click 'Save PDF' and the browser will be directed to open the pdf file directly. Please see this [example Rate vs Range Report](#)

