



CT523-328-2ac-1n-IL LANforge WiFIRE 802.11a/b/g/n/ac 3 radio WiFi Traffic Generator Supporting 328 Virtual STA Interfaces

The CT523-328-2ac-1n-IL wireless traffic generator is an excellent choice for testing Access Points and other WiFi networks. The CT523-328-2ac-1n-IL uses a modified Wireless driver for WiFi NICs based on the Atheros chipset. The ath9k (a/b/g/n) chipset NICs can support up to 200 stations per radio. The ath10k (a/b/g/n/ac) chipset NICs can support up to 64 stations per radio. Each of the Virtual Stations has its own IP address, IP port space, MAC address and routing table. The Virtual Stations can be assigned to communicate to a particular Access Point, use a particular SSID, and Open or WPA/WPA2 authentication assigned. More advanced 802.1X authentication is also included. Each radio can be configured independently of the other. Transmit power and channel/frequency is configured on a per-radio basis. Most other settings are configurable per virtual station.

There are two ath10k a/b/g/n/ac and one ath9k a/b/g/n WiFi radios per CT523-328-2ac-1n-IL and multiple LANforge systems can be clustered together for even more realistic radio interference patterns and increased traffic generation capability.

All virtual stations on the same radio must be on the same frequency, but as long as the protocol supports that frequency, the multiple protocols can be used concurrently. For instance, if the radio is configured for a 2.4Ghz channel, the stations can be /b, /g, /n, or /ac. If the radio is on a 5Ghz channel, the stations can be /a, /n or /ac. The bandwidth can be configured for all protocols. For 802.11n, configuring the MCS rates also determines the number of streams (1x1, 2x2, 3x3, etc.).

NOTE: ath10k 802.11ac radios and stations may be more limited in rate selection and other features for the initial release.

The Virtual Stations may be configured with all of the virtual interfaces on the same subnet, or different subnets, depending on the testing requirements. When used with something like VoIP, it allows all of the VoIP calls to use the standard IP ports (with one call per virtual interface).

The CT523-328-2ac-1n-IL has no fans and is silent. It has 9 antenna. It will fit into a small travel bag or briefcase for easy portability. No additional hardware or software is required, but it is suggested that you manage the system using the LANforge GUI on a separate machine. The CT523-328-2ac-1n-IL can also be managed over a serial console in text mode or through directly connected monitor, mouse and keyboard.

NOTE: This system is locked to the Israel regulatory domain:

```
country IL: DFS-ETSI
          (2402 - 2482 @ 40), (20)
          (5150 - 5250 @ 80), (200 mW), NO-OUTDOOR
          (5250 - 5350 @ 80), (200 mW), NO-OUTDOOR, DFS
```



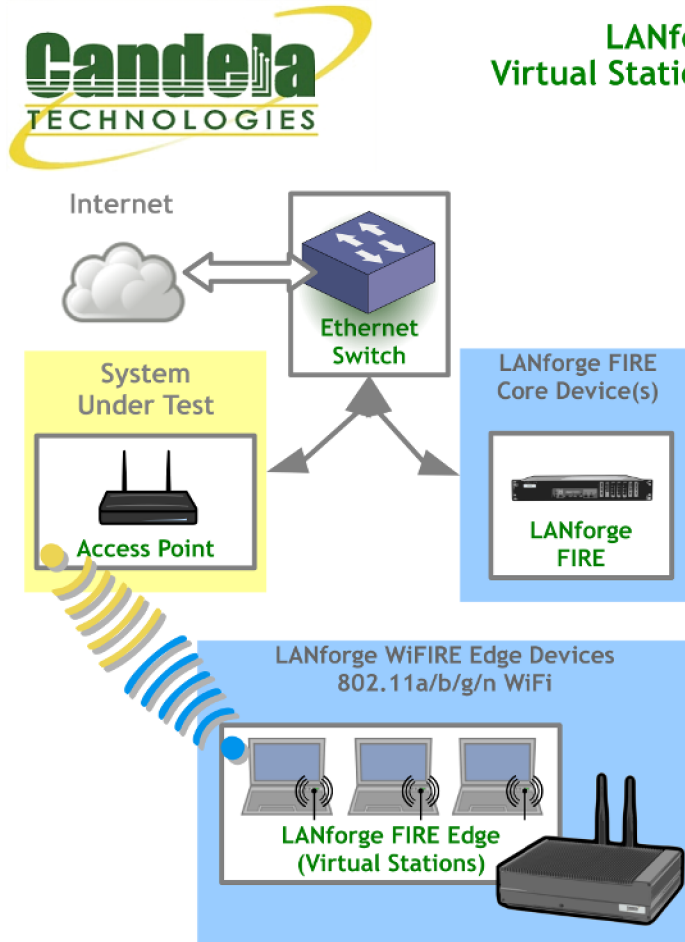
Candela Technologies Inc., 2417 Main Street, Suite 201, P.O. Box 3285, Ferndale, WA 98248, USA
www.candelatech.com | sales@candelatech.com | +1 360 380 1618



NOTE: This product may have a different hardware configuration than the system pictured above.
Refer to your official quote for details.

Candela Technologies Inc., 2417 Main Street, Suite 201, P.O. Box 3285, Ferndale, WA 98248, USA
www.candelatech.com | sales@candelatech.com | +1 360 380 1618

Example Network Diagram



LANforge WiFIRE Virtual Station Traffic Generator

LANforge WiFIRE supports 802.11 Virtual Stations and Access Points*. To the System Under Test, it appears as if there are multiple PCs sitting inside the LANforge system generating independent traffic streams over Wireless NICs.

Many Virtual Station interfaces are supported per LANforge WiFIRE machine. LANforge can send traffic from one physical interface on the local machine to another interface on that same machine. Each physical and virtual interface can be configured on the same, or on different IP subnets.

In the configuration on the left, the LANforge FIRE Core can be one physical Ethernet interface and act as the server. The LANforge FIRE Edge can be the Virtual Station interfaces configured on the WiFi radio. Both interfaces can be on the same machine or multiple LANforge machines can be clustered together for increased traffic generation capacity.

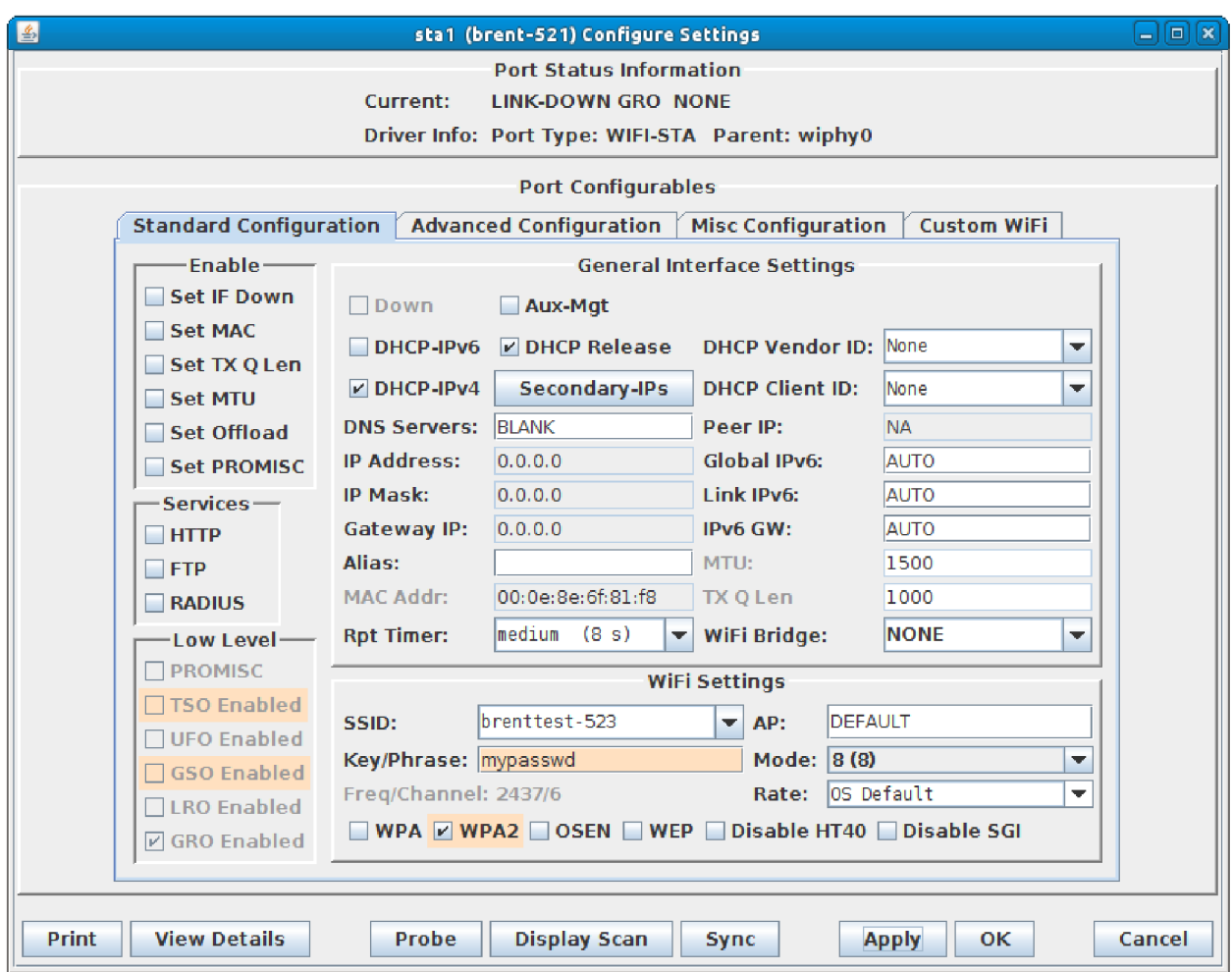
* All system support 802.11 a/b/g/n. Some systems support 802.11ac as well.

Quick Start Guide

1. Connect Management Ethernet port to Management network or management PC. If connecting directly to a PC, an Ethernet cross-over cable should be used.
2. Connect eth1 wired Ethernet interface to wired Ethernet interface on the AP or network under test. This usually is considered the 'server' side of the network.
3. The Client side of the network will be the Virtual Stations configured on the CT523-328-2ac-1n-IL WiFi NIC(s).
4. Connect power brick to standard US or European AC power source. If using external battery pack, then connect to that instead.
5. Install the LANforge-GUI on a separate management PC or Laptop. Windows and Linux GUIs are supported: Select the correct one from the CDROM or Candela Technologies Download page and install it. The CT523-328-2ac-1n-IL appliance has a web server that also provides the LANforge GUIs.
6. The CT523-328-2ac-1n-IL should now boot. If DHCP is enabled on the Management network, the CT523-328-2ac-1n-IL will automatically acquire an IP address. If DHCP is not available, the IP address will be set to 192.168.1.101 by the LANforge scripts.
7. Start the LANforge-GUI on the management PC and click the 'Discover' button. It should find the CT523-328-2ac-1n-IL appliance and add the IP address to the drop-down box in the Connect widget. Press 'Connect' and you will be connected to the CT523-328-2ac-1n-IL.
8. Select the Port Mgr tab in the GUI. Double-click on the device called 'wiphy0'. This is the Radio device, and should be configured for the correct, channel, country-code, etc. Next, select one or more of the Virtual Station interfaces and click 'Modify'. Enter the correct IP address information, SSID and WEP or WPA/WPA2 key (if Enabled). After applying these changes, the Virtual Station interface should associate with the AP and be ready to send traffic. You may create up to 328 Virtual Station interfaces per CT523-328-2ac-1n-IL with the 'Create' button.
9. Once the interfaces are configured correctly, you can click on the Layer 3, VOIP/RTP and other LANforge-FIRE related GUI tabs and configure/modify/start/stop particular traffic patterns that utilize the virtual stations and wired Ethernet interface. In most cases, you will want one of the FIRE endpoints to be on the wired interface and the other to be on the WiFi Virtual Station interface. It is also valid to generate traffic between two Virtual Station interfaces. The GUI Plugins menu (and right-click on some tables) provides some plugins to do automated testing and reporting. Contact support if you have suggestions for improvements.
10. Any GUI modifications take place immediately after you click 'Submit'.

LANforge WiFIRE Related Images

Virtual Station Configuration Screen



Candela Technologies Inc., 2417 Main Street, Suite 201, P.O. Box 3285, Ferndale, WA 98248, USA
www.candelatech.com | sales@candelatech.com | +1 360 380 1618

Layer 3 (Ethernet, UDP, TCP) Connections

The screenshot shows the LANforge Manager interface with the 'Layer-3' tab selected. A table titled 'Cross Connects for Selected Test Manager' displays the following data:

Name	Type	State	Pkt Rx A → B	Pkt Rx A ← B	Rate A → B	Rate A ← B	Rx Drop % A	Rx Drop % B	Drop Pkts A	Drop Pkts B	Avg RTT
xcdx-1	LF/UDP	Run	17,294	17,549	9,998,239	9,997,437	0	0	0	0	1
xcdx-10	LF/UDP	Run	17,377	17,716	9,997,632	9,996,340	0	0	0	0	0
xcdx-2	LF/UDP	Run	17,548	17,802	9,997,351	9,996,964	0	0	0	0	0
xcdx-3	LF/UDP	Run	17,633	17,802	9,997,891	9,996,964	0	0	0	0	0
xcdx-4	LF/UDP	Run	17,633	17,802	9,997,891	9,996,964	0	0	0	0	1
xcdx-5	LF/UDP	Run	17,718	17,036	9,997,947	9,992,326	0	0	0	0	1
xcdx-6	LF/UDP	Run	17,718	17,044	9,997,947	9,997,018	0	0	0	0	1
xcdx-7	LF/UDP	Run	17,718	17,044	9,997,947	9,997,018	0	0	0	0	1
xcdx-8	LF/UDP	Run	17,718	17,044	9,997,947	9,997,516	0	0	0	0	1

Layer 3 Create/Modify Screen

The screenshot shows the 'udp-se - Create/Modify Cross Connect' dialog box with the following configuration:

- CX Name:** udp-se
- CX Type:** LANforge / UDP
- Resource:** 1 (brent-6port) for both Endpoint A and B
- Port:** 1 (eth0) for Endpoint A, 2 (eth1) for Endpoint B
- Min Tx Rate:** New Modem (56 Kbps) for both
- Max Tx Rate:** Same for both
- Min PDU Size:** AUTO for both
- Max PDU Size:** Same for both
- IP ToS:** Best Effort (0) for both
- Pkts To Send:** Infinite for both
- Report Timer:** default (5 s)
- Pld Pattern:** increasing for both
- Min IP Port:** AUTO for both
- Max IP Port:** Same for both
- Min Duration:** Forever for both
- Max Duration:** Same for both
- Min Recon:** 0 (0 ms) for both
- Max Recon:** Same for both
- Multi-Conn:** Normal (0) for both
- Script/Thresholds:** Buttons for both endpoints
- Test Manager:** default_tm
- Quiesce:** 3 (3 sec)
- IP Addr:** AUTO for both
- Replay File:** Unchecked for both
- Loop:** Unchecked for both
- Dest Mac:** Checked for both
- Filename:** (empty) for both
- Dest MAC:** <custom> for both
- Snd Buff Size:** OS Default for both
- Rcv Buff Size:** OS Default for both
- Send Bad FCS:** zero (0%) for both
- Src MAC:** 00:00:00:00:00:00 for both
- Use-Proxy:** Unchecked for both
- Proxy Addr:** 0.0.0.0 for both
- Proxy Port:** 0 for both
- Socket Priority:** 0 for both
- Payload:** Buttons for both endpoints
- Conn Timeout:** 10s (10 s) for both
- TCP MSS:** OS Default for both
- Endpoint A Options:**
 - Do Checksum
 - Duration Quiesce
 - Quiesce-After-Range
 - TCP_NODELAY
 - Concurrent IP Adrs
 - Clear-Port-On-Start
 - Linear-IP-Ports
- Endpoint B Options:**
 - Do Checksum
 - UnManaged
 - Duration Quiesce
 - Quiesce-After-Range
 - TCP_NODELAY
 - Concurrent IP Adrs
 - Clear-Port-On-Start
 - Linear-IP-Ports
- Endp Name:** udp-se-A for Endpoint A, udp-se-B for Endpoint B

Software Features

- Supports real-world protocols:
 - Layer 2: Raw-Ethernet.
 - 802.1Q VLANs.
 - PPPoE: Integrated PPPoE support.
 - Layer 3: IPv4, IPv6, UDP/IP, IGMP Multicast UDP, TCP/IP.
 - Layer 4: FTP, HTTP, HTTPS, TFTP, SFTP, SCP
 - 802.11a/b/g/n Wireless Station (up to 200 per machine).
 - 802.11a/b/g/n/ac Wireless Station (up to 128 per machine).
 - Layer 4: TELNET, PING, DNS, SMTP, NMAP (via add-on script).
 - File-IO: NFSv3, NFSv4, CIFS, iSCSI.
- Supports up to 1000 concurrent TCP connections with base license package.
- The CT523-328-2ac-1n-IL is able to push up to 345Mbps through an AP, depending on the protocols mix, wireless mode and environment, and speed of the network under test. Supports at least 60 VoIP (SIP, RTP) calls if appropriate licenses are purchased. When all two ath10k a/b/g/n/ac and one ath9k a/b/g/n radios are configured on different channels, combined maximum upload speed exceeds 625Mbps (**NOTE: Tested with 802.11a/b/g/n NICs. The ath10k a/b/g/n/ac chipset NICs have not been performance tested yet.**) More powerful systems are also available.
- Supports real-world compliance with ARP protocol.
- Supports ToS (QoS) settings for TCP/IP and UDP/IP connections.
- Uses publicly available Linux and Windows network stacks for increased standards compliance.
- Utilizes [libcurl](#) for FTP, HTTP and HTTPS (SSL), TFTP and SCP protocols.
- Supports file system test endpoints (NFS, CIFS, and iSCSI file systems, too!). File system mounts can use the virtual interface feature for advanced testing of file server applications.
- Supports custom command-line programs, such as telnet, SMTP, and ping.
- Comprehensive traffic reports include: Packet Transmit Rate, Packet Receive Rate, Packet Drop %, Transmit Bytes, Receive Bytes, Latency, Jitter, various Ethernet driver level counters, and much more.
- Supports generation of reports that are ready to be imported into your favorite spread-sheet.
- Allows packet sniffing and network protocol decoding with the integrated [Wireshark](#) protocol sniffer.
- GUI runs as Java application on Linux, Solaris and Microsoft Operating Systems (among others).
- GUI can run remotely, even over low-bandwidth links to accommodate the needs of the users.
- Central management application can manage multiple units, tests, and testers simultaneously.

- Includes easy built-in scripting for iterating through rates and packet sizes, with automated reporting. Also supports scriptable command line interface (telnet) which can be used to automate test scenarios. Perl libraries and example scripts are provided!
- Automatic discovery of LANforge data generators simplifies configuration of LANforge test equipment.
- LANforge traffic generation/management software is supported on Linux, Solaris and MS Windows.

Candela Technologies Inc., 2417 Main Street, Suite 201, P.O. Box 3285, Ferndale, WA 98248, USA
www.candelatech.com | sales@candelatech.com | +1 360 380 1618

Hardware Specification

- High-End Appliance with no fans.
- Operating System: Fedora Linux with customized 64-bit Linux kernel.
- Two 1Gbps Ethernet ports, room for three wifi NICs.
- Intel i7-2655LE 2.2 GHz processor.
- RJ45 Serial console (115200 8 N 1) for console management & initial configuration.
- VGA/DVI-D, USB ports for desktop usage.
- 8 GB RAM.
- 40 GB Solid State Hard Drive.
- Larger storage drives available.
- 9-30v 4AMP external power supply (brick).
- Weight: 8 lbs
- Dimensions: 11 x 8 x 2.6 inches Metric: 277 x 194 x 67 mm.
- Operating Temperature: -20 ~ 55°C.
- Certification: CE Emission, FCC Class A, RoHS Compliant.

List Price: \$31,700 List Price with 1 Year support (17%): \$37,089

Additional Feature Upgrades

Unless otherwise noted in the product description, these features usually cost extra:

- WanPaths (LANforge-ICE feature set)
- Virtual Interfaces: MAC-VLANs, 802.1Q VLANs, WiFi stations, etc
- FIRE Connections: Base FIRE license includes 1000 active connections.
- **WiFi RF Attenuator**: Adjust WiFi signal strength in a controllable manner.
- **SMA RF Cable Bundle**: Used to cable LANforge WiFIRE radios to device-under-test.
- LANforge-ICE Network Emulation.
- VOIP: Each concurrent call over the included package requires a license.
- Armageddon: Each pair of ports requires a license if not already included.
- External battery pack: 12+ hours for CT521, CT523, CT919, CT92X platforms. Ask for others.

Candela Technologies Inc., 2417 Main Street, Suite 201, P.O. Box 3285, Ferndale, WA 98248, USA
www.candelatech.com | sales@candelatech.com | +1 360 380 1618

Last modified: Mon Nov 30 13:03:33 PST 2015