

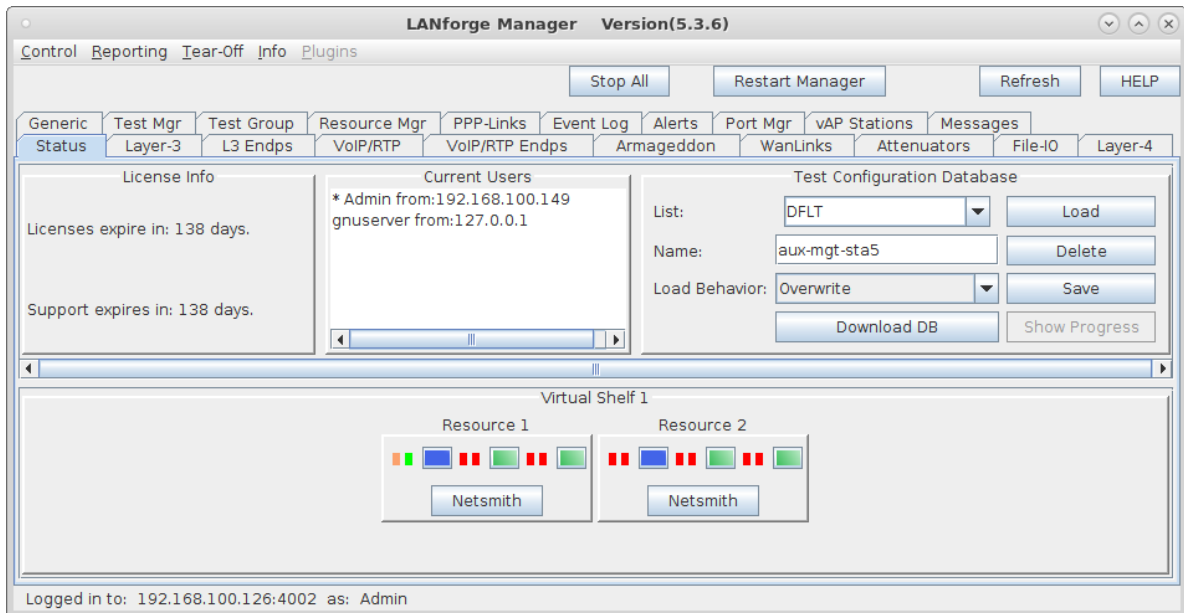
Configure Auxiliary Management Interfaces

Goal: Allow LANforge to create its own wireless management network.

In cases where it is not convenient to use an existing management network, LANforge WiFi systems can be configured to provide their own WiFi management network. This may be especially useful when testing in environments where LANforge needs to be moved around or where you have no good access to existing management LANs. This example assumes that you already know how to create and configure VAP and Stations in LANforge.

1. Configure LANforge for Auxiliary Management.

- A. Connect LANforge systems through the normal management LAN for initial configuration. The resources should be visible in the management tab



- B. In this case, we are using wiphy0 for the Aux-Mgt interfaces. On the manager system, configure wiphy0 to be on the desired channel, create a virtual AP on wiphy0, and configure it appropriately. The **Aux-Mgt** checkbox should be selected, a static IP should be assigned, and an appropriate SSID configured. The AP Aux-Mgt port will automatically serve DHCP and will try to NAT and route packets to the wired Management interface.

vap0 (If0350-6f84) Configure Settings

Port Status Information
Current: LINK-UP GRO NONE
Driver Info: Port Type: WIFI-AP Parent: wiphy0

Port Configurables

Standard Configuration | Advanced Configuration | Misc Configuration | Custom WiFi

Enable

- ☐ Set IF Down
- ☐ Set MAC
- ☐ Set TX Q Len
- ☐ Set MTU
- ☐ Set Offload
- ☐ Set PROMISC

Services

- ☐ HTTP
- ☐ FTP

Low Level

- ☐ PROMISC
- ☒ TSO Enabled
- ☐ UFO Enabled
- ☒ GSO Enabled
- ☐ LRO Enabled
- ☒ GRO Enabled

General Interface Settings

☐ Down ☒ Aux-Mgt

☐ DHCP-IPv6 ☒ DHCP Release DHCP Vendor ID: None

☒ DHCP-IPv4 Secondary-IPs DHCP Client ID: None

DNS Servers: BLANK Peer IP: NA

IP Address: 99.99.1.1 Global IPv6: AUTO

IP Mask: 255.255.255.0 Link IPv6: AUTO

Gateway IP: 0.0.0.0 IPv6 GW: AUTO

Alias: MTU: 1500

MAC Addr: 00:0e:8e:75:3d:8d TX Q Len: 1000

Rpt Timer: medium (8 s) WiFi Bridge: NONE

WiFi Settings

SSID: lanforge-mgt AP: DEFAULT

Key/Phrase: Mode: (802.11abgn-AC)

Freq/Channel: 2462/11 Rate: OS Default

DTIM-Period: 2 Max-STA: 2007

Beacon: 240

☐ WPA ☐ WPA2 ☐ OSEN ☐ WEP ☐ Disable HT40 ☐ Disable HT80 ☐ Enable VHT160 ☐ Disable SGI

☐ Verbose Debug

Print View Details Logs Probe Display Scan Sync Apply OK Cancel

- C. On the other resources, configure the wlanX interface to connect to the AP on the manager system, and select the **Aux-Mgt** checkbox.

- D. The Port-Mgr tab should look something like this when the Aux-Management interfaces are configured.

Port	Pha...	Down	IP	SEC	Alias	Parent Dev	RX Bytes	RX Pkts	Pps RX	bps RX	TX Bytes	TX Pkts	Pps TX
1.1.0			192.168.100.126	0	eth0		190,618,480	221,996	10	9,135	169,584,879	163,484	14
1.1.1			0.0.0.0	0	eth1		0	0	0	0	0	0	0
1.1.2			0.0.0.0	0	eth2		0	0	0	0	0	0	0
1.1.3			0.0.0.0	0	wiphy0		128,822,643	338,150	53	151,268	6,903,320	53,578	8
1.1.4			0.0.0.0	0	wiphy1		0	0	0	0	0	0	0
1.1.5			0.0.0.0	0	wlan0	wiphy0	0	0	0	0	0	0	0
1.1.6			0.0.0.0	0	wlan1	wiphy1	0	0	0	0	0	0	0
1.1.7			99.99.1.1	0	vap0	wiphy0	40,938,553	37,349	7	62,461	3,953,755	35,591	6
1.2.00			192.168.100.109	0	eth0		111,649,961	88,549	0	0	24,980,368	29,494	0
1.2.01			0.0.0.0	0	eth1		0	0	0	0	0	0	0
1.2.02			0.0.0.0	0	eth2		0	0	0	0	0	0	0
1.2.03			88.1.1.187	0	sta100	wiphy1	20,738	171	0	0	4,074	39	0
1.2.04			0.0.0.0	0	wiphy1		17,988,948	86,713	19	31,472	59,967	1,170	0
1.2.05			88.1.1.193	0	sta101	wiphy1	20,454	163	0	0	4,974	47	0
1.2.06			88.1.1.186	0	sta102	wiphy1	20,644	160	0	0	10,802	73	0
1.2.07			88.1.1.189	0	sta103	wiphy1	17,368	146	0	0	4,272	44	0
1.2.08			88.1.1.194	0	sta104	wiphy1	20,306	165	0	0	5,420	48	0
1.2.09			0.0.0.0	0	wiphy0		16,072,057	75,744	11	12,999	43,571,163	39,673	7
1.2.10			99.99.1.11	0	wlan0	wiphy0	3,228,043	35,474	6	4,820	41,679,777	37,345	7
1.2.11			0.0.0.0	0	wlan1	wiphy1	0	0	0	0	0	0	0

- E. To test that it works properly, you can now remove the wired Manament port connection and wait about 1 minute for the old connection to time out and re-connect to the Auxiliary Management port. Or, just reboot systems with the wired ports unplugged and they should be discovered on the Aux-Mgt ports promptly.

