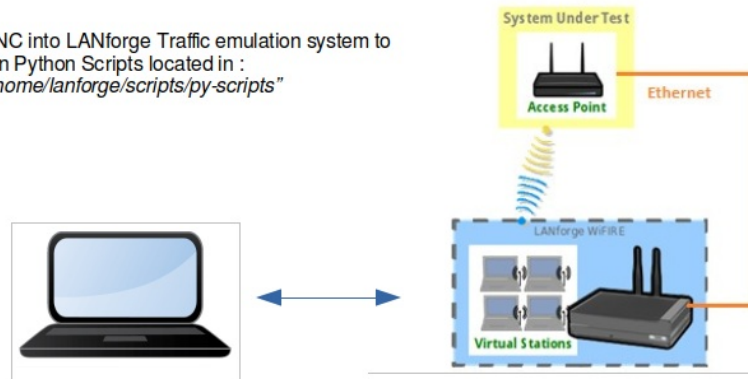


## Basic: Layer4 FTP Traffic Generation: test\_I4.py

**Goal:** Use Python Script **test\_I4.py** to Generate Layer4 FTP Traffic

Each LANforge system has Python scripts installed at `/home/lanforge/scripts`. You can find `test_I4.py` at

VNC into LANforge Traffic emulation system to run Python Scripts located in :  
`"/home/lanforge/scripts/py-scripts"`



`/home/lanforge/scripts/py-script/test_I4.py`

The script **test\_I4.py** will:

- Create stations (on the specified radio).
- Create Layer 4-7 endpoints.
- Monitor the bytes-rd attribute of the created endpoints.

The test type attribute is configurable:

```
bytes-rd
    monitor the bytes read
bytes-wr
    monitor the bytes written
urls
    monitor the url's per second
```

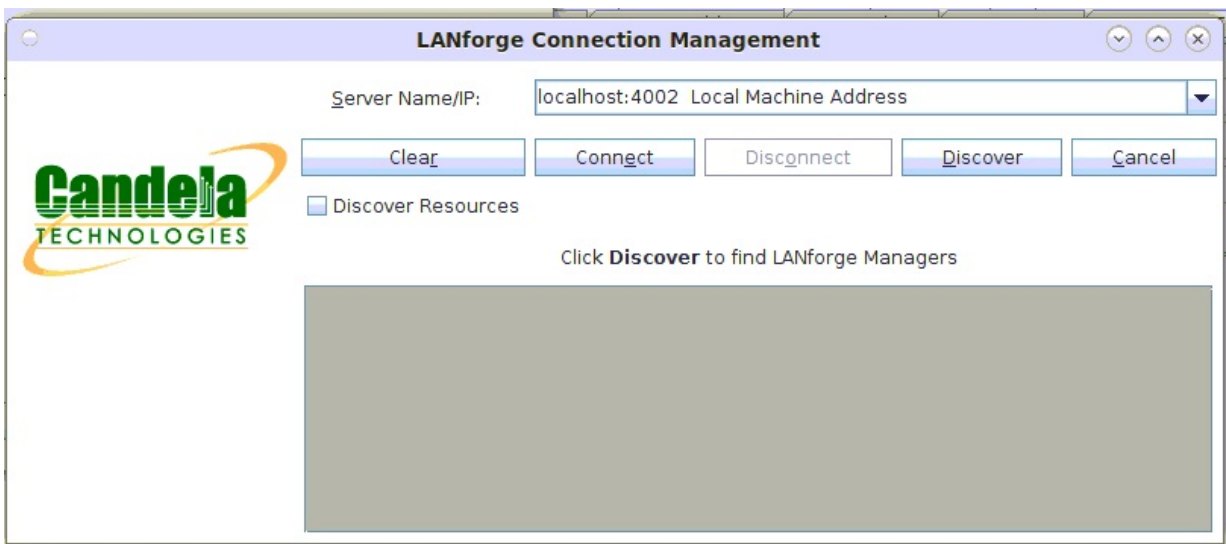
The monitored Layer 4-7 attribute statistics are recorded at the end of each polling interval. `test_I4.py` will monitor the `urls/s`, `bytes-rd`, or `bytes-wr` attribute of the layer 4-7 endpoints. These attributes can be tested over FTP using a `--ftp` flag. If the monitored value does not continually increase, this test will not pass. The script cleans up the stations and connections at the end of the test. An HTML and PDF report of the results will be generated and placed in the `/home/lanforge/html-reports` directory.

1. Start the LANforgeGUI if the GUI is not running:

To start the LANforgeGUI navigate to : `/home/lanforge/LANforgeGUI_5.4.5`

Execute : `./lfc1ient.bash`

Click the **Connect** button to connect to: `localhost:4002 Local Machine Address`



2. Where Do I Find Scripts?

Preinstalled Python Scripts Location on LANforge: `/home/lanforge/scripts/py-scripts`

Example script test\_l4.py location: `/home/lanforge/scripts/py-scripts/test_l4.py`

3. Initial Information to Gather as input for the test\_l4.py script:

Note: An example of a Device Under Test is an Access Point. The DUT information is used in report generation. The DUT information may be optional.

- A. The LANforge manager IP address: `--mgr [localhost]`
- B. The LANforge upstream port: `--upstream_port [eth port]`
- C. The LANforge radio information :  
`--radio 'radio==[radio] stations==[number] ssid==[ssid] ssid_pw==[password] security==[security]'`
- D. The LANforge station creation amount: `--num_stations [2]`
- E. The AP SSID name: `--ssid [SSID]`
- F. The AP security type: `--security [open, wpa, wpa2, wpa3]`
- G. The AP SSID password: `--passwd [password]`
- H. The Test Duration : `--test_duration [value] (s - seconds, m - minutes, h - hours)`
- I. The Test URL: `--url "dl http://upstream_port_ip /dev/null"`
- J. The Test Type: `--test_type [bytes-rd]`
- K. The Service Request Interval: `--requests_per_ten [600]`
- L. The Test Rig: `--test_rig [test system id]`
- M. The Test Tag: `--test_tag [unique test id]`
- N. The Device Under Test Model Number: `--dut_model_num [model]`
- O. The Device Under Test Hardware Version: `--dut_hw_version [hw version]`
- P. The Device Under Test Software Version: `--dut_sw_version [sw version]`
- Q. The Device Under Test Serial Number: `--dut_serial_num [serial number]`

4. Example Command for test\_l4.py:

```
./test_l4.py --lfmgr localhost \  
--upstream_port 1.1.eth1 \  
--radio 1.1.wiphy0 \  
--num_stations 2 \  
--ssid AP_SSID \  
--security wpa2 \  
--passwd password \  
--test_duration 1m \  
--url "dl http://upstream_port_ip /dev/null" \  
--test_type bytes_rd \  
--request_per_ten 600 \  

```

```
--test_rig CT_LAB_L4 \  
--test_tag Layer_4_Example \  
--dut_model_num RT-AX88U \  
--dut_hw_version A1.1 \  
--dut_sw_version 3.0.0.4.384 \  
--dut_serial_num M1IAHP000003
```



5. Results for test\_l4.py are located in `/home/lanforge/html-reports`:



6. Results for test\_l4.py are located in `/home/lanforge/html-reports`:

The script produces both HTML and PDF results:

- example of **HTML** output
- example of **PDF** output
- example of **kpi.csv** output

Additional script options may be shown by typing `./test_l4.py --help`

Candela Technologies, Inc., 2417 Main Street, Suite 201, Ferndale, WA 98248, USA  
www.candelatech.com | sales@candelatech.com | +1.360.380.1618