

Windows MAC Addresses

Goal: Find MAC Addresses in Microsoft Windows.

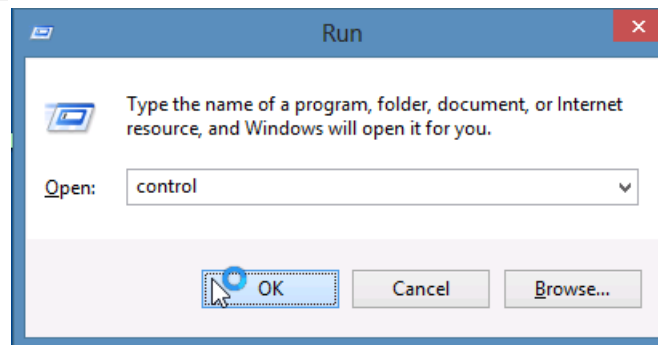
Here are some techniques for finding MAC addresses on Microsoft Windows using the Control Panel and the command line.



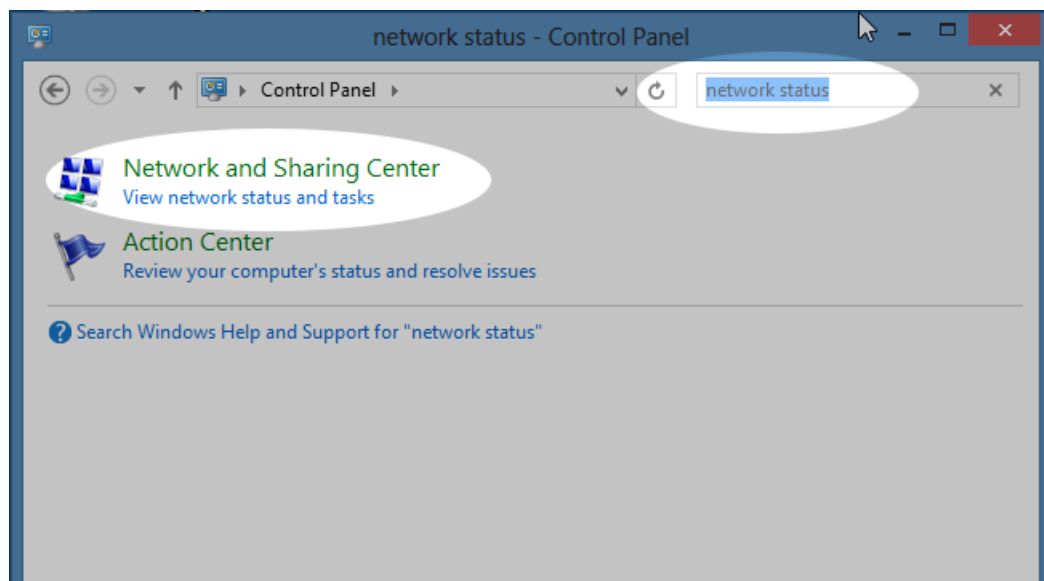
1. Find the MAC Address of the Windows PC. There are two methods you can use:

A. **Method 1:** use the Control Panel

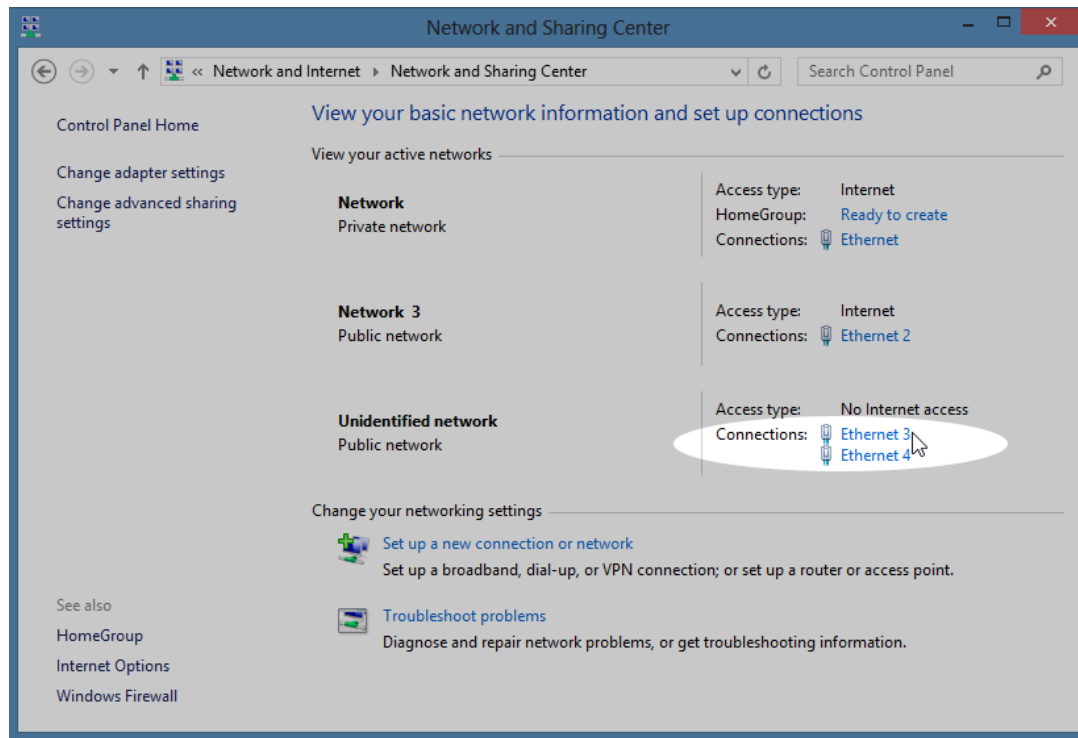
A. Click *Start, Run*, `control`, [enter]



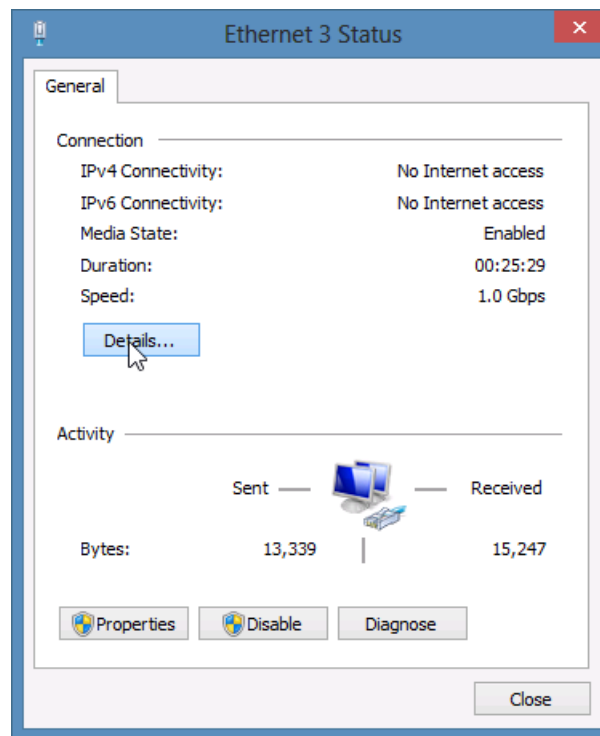
B. Search and select *Network Status and Devices*



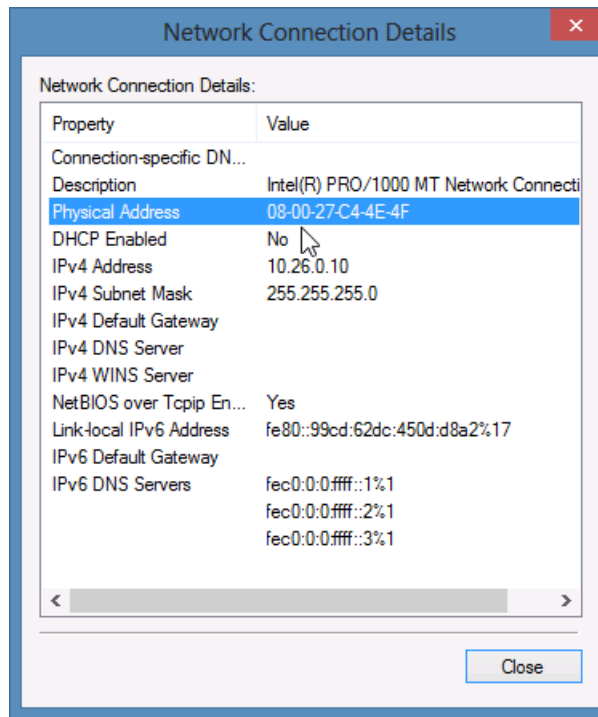
C. We click on our device, **Ethernet 3**:



D. Click **Details...**



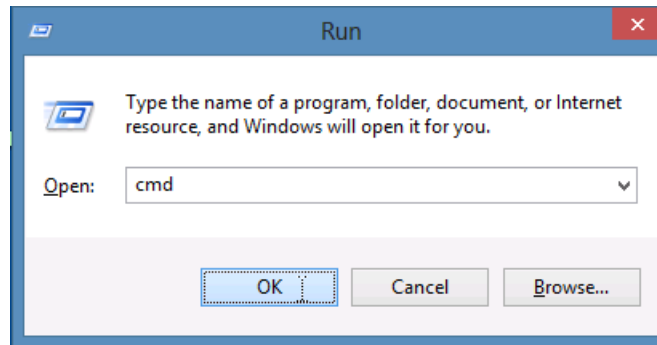
E. Details will show the MAC address (physical address):



F. (Suggested) Set the IP address if you have not already. For more information see [Finding Windows IP Address](#)

B. **Method 2:** use the DOS command-line. You want to correlate the IP address and MAC address of the Windows ethernet port:

A. Click *Start*, *Run*, and type `cmd`, and press [Enter]



- B. Show interfaces by name with the command: `netsh interface ipv4 show addresses`

```
C:\Windows\system32\cmd.exe
C:\Users\IEUser>netsh interface ipv4 show addresses

Configuration for interface "Ethernet 4"
DHCP enabled:                Yes
IP Address:                  169.254.3.216
Subnet Prefix:               169.254.0.0/16 <mask 255.255.0.0>
InterfaceMetric:             10

Configuration for interface "Ethernet 3"
DHCP enabled:                No
IP Address:                  10.26.0.10
Subnet Prefix:               10.26.0.0/24 <mask 255.255.255.0>
InterfaceMetric:             10

Configuration for interface "Ethernet 2"
DHCP enabled:                Yes
IP Address:                  192.168.100.135
Subnet Prefix:               192.168.100.0/24 <mask 255.255.255.0>
Default Gateway:             192.168.100.1
Gateway Metric:              0
InterfaceMetric:             10

Configuration for interface "Ethernet"
DHCP enabled:                Yes
IP Address:                  10.0.2.15
Subnet Prefix:               10.0.2.0/24 <mask 255.255.255.0>
Default Gateway:             10.0.2.2
Gateway Metric:              0
InterfaceMetric:             10

Configuration for interface "Loopback Pseudo-Interface 1"
DHCP enabled:                No
IP Address:                  127.0.0.1
Subnet Prefix:               127.0.0.0/8 <mask 255.0.0.0>
InterfaceMetric:             50

C:\Users\IEUser>
```

- C. (Optional) if you do not see results, you might need to start the network autodiscovery service: `net start dot3svc`

```
$ net start dot3svc
The Wired AutoConfig service is starting.
The Wired AutoConfig service was started successfully.
```

- D. (Optional) Depending on the edition of Windows, the command `netsh lan show interfaces` will display mac addresses.

```
$ netsh lan show interfaces

There are 4 interfaces on the system:

Name       : Ethernet 3
Description: Intel(R) PRO/1000 MT Network Connection #2
GUID       : a3ac1715-8740-4b8f-8022-fec68d9bbd6e
Physical Address: 08-00-27-C4-4E-4F
State      : Connected. Network does not support authentication.

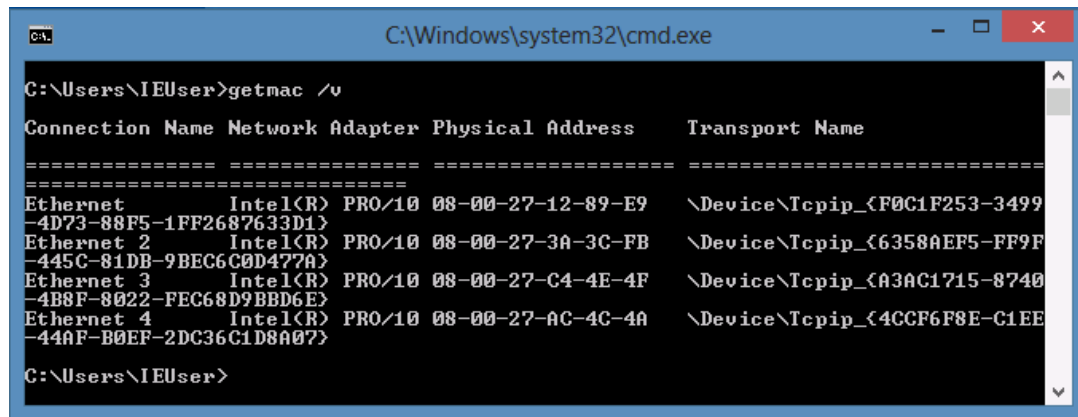
Name       : Ethernet 2
Description: Intel(R) PRO/1000 MT Network Connection
GUID       : 6358aef5-ff9f-445c-81db-9bec6c0d477a
Physical Address: 08-00-27-3A-3C-FB
State      : Connected. Network does not support authentication.

Name       : Ethernet
Description: Intel(R) PRO/1000 MT Desktop Adapter
GUID       : f0c1f253-3499-4d73-88f5-1ff2687633d1
Physical Address: 08-00-27-12-89-E9
State      : Connected. Network does not support authentication.

Name       : Ethernet 4
Description: Intel(R) PRO/1000 MT Network Connection #3
GUID       : 4ccf6f8e-c1ee-44af-b0ef-2dc36c1d8a07
Physical Address: 08-00-27-AC-4C-4A
State      : Connected. Network does not support authentication.
```

- E. Show mac addresses with: `getmac /v /fo csv`

(The CSV formatted command of the command ensures that we will see the entire name of the interface which can be trimmed short in the default output format.)



```
C:\Windows\system32\cmd.exe

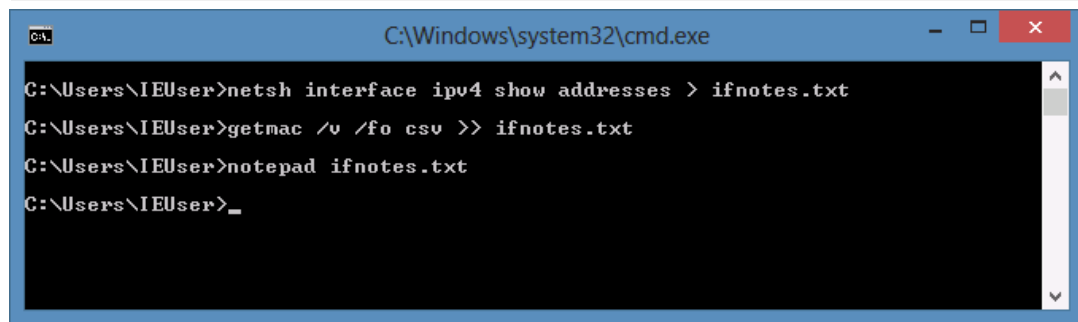
C:\Users\IEUser>getmac /v

Connection Name Network Adapter Physical Address Transport Name
=====
Ethernet Intel(R) PRO/1000 MT Desktop Adapter {F0C1F253-3499-4D73-88F5-1FF2687633D1} \Device\NPF{F0C1F253-3499-4D73-88F5-1FF2687633D1}\{F0C1F253-3499-4D73-88F5-1FF2687633D1}
Ethernet 2 Intel(R) PRO/1000 MT Network Connection #2 {6358AEF5-FF9F-445C-81DB-9BEC6C0D477A} \Device\NPF{6358AEF5-FF9F-445C-81DB-9BEC6C0D477A}\{6358AEF5-FF9F-445C-81DB-9BEC6C0D477A}
Ethernet 3 Intel(R) PRO/1000 MT Network Connection #3 {A3AC1715-8740-4B8F-8022-FEC68D9BBD6E} \Device\NPF{A3AC1715-8740-4B8F-8022-FEC68D9BBD6E}\{A3AC1715-8740-4B8F-8022-FEC68D9BBD6E}
Ethernet 4 Intel(R) PRO/1000 MT Network Connection #4 {4CCF6F8E-C1EE-44AF-B0EF-2DC36C1D8A07} \Device\NPF{4CCF6F8E-C1EE-44AF-B0EF-2DC36C1D8A07}\{4CCF6F8E-C1EE-44AF-B0EF-2DC36C1D8A07}

C:\Users\IEUser>
```

- F. These commands will make it easier to copy using **notepad**:

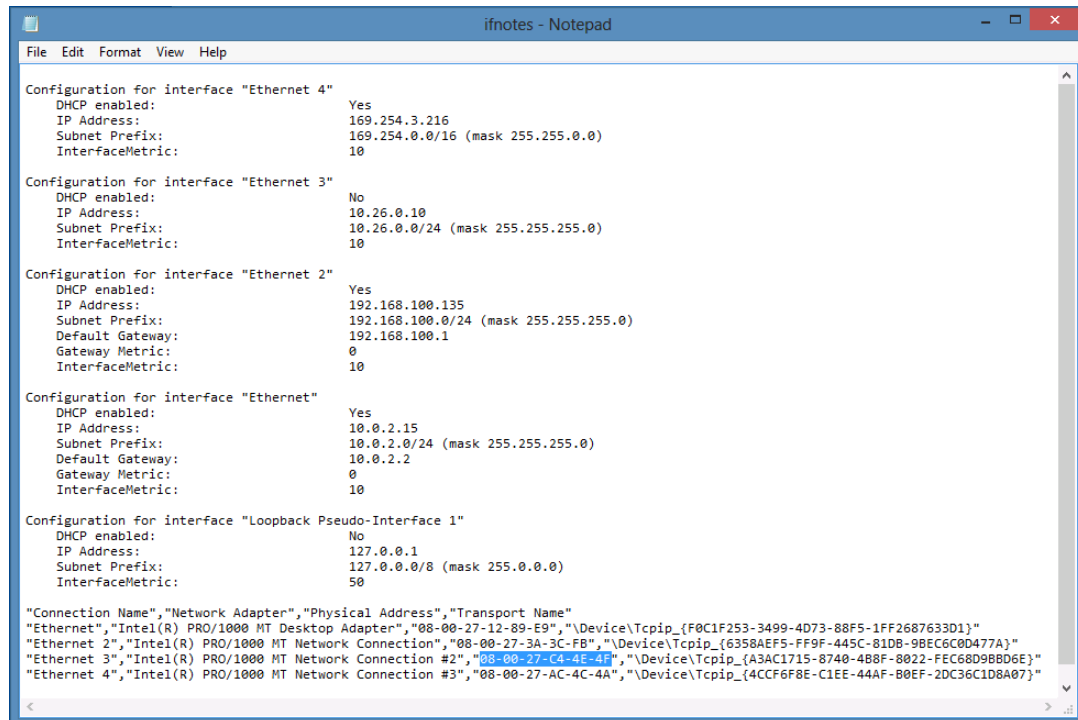
```
netsh interface ipv4 addresses > ifnotes.txt
getmac /v /fo csv >> ifnotes.txt
notepad ifnotes.txt
```



```
C:\Windows\system32\cmd.exe

C:\Users\IEUser>netsh interface ipv4 show addresses > ifnotes.txt
C:\Users\IEUser>getmac /v /fo csv >> ifnotes.txt
C:\Users\IEUser>notepad ifnotes.txt
C:\Users\IEUser>
```

- G. Now you can easily copy the values:



```
ifnotes - Notepad
File Edit Format View Help

Configuration for interface "Ethernet 4"
  DHCP enabled: Yes
  IP Address: 169.254.3.216
  Subnet Prefix: 169.254.0.0/16 (mask 255.255.0.0)
  InterfaceMetric: 10

Configuration for interface "Ethernet 3"
  DHCP enabled: No
  IP Address: 10.26.0.10
  Subnet Prefix: 10.26.0.0/24 (mask 255.255.255.0)
  InterfaceMetric: 10

Configuration for interface "Ethernet 2"
  DHCP enabled: Yes
  IP Address: 192.168.100.135
  Subnet Prefix: 192.168.100.0/24 (mask 255.255.255.0)
  Default Gateway: 192.168.100.1
  Gateway Metric: 0
  InterfaceMetric: 10

Configuration for interface "Ethernet"
  DHCP enabled: Yes
  IP Address: 10.0.2.15
  Subnet Prefix: 10.0.2.0/24 (mask 255.255.255.0)
  Default Gateway: 10.0.2.2
  Gateway Metric: 0
  InterfaceMetric: 10

Configuration for interface "Loopback Pseudo-Interface 1"
  DHCP enabled: No
  IP Address: 127.0.0.1
  Subnet Prefix: 127.0.0.0/8 (mask 255.0.0.0)
  InterfaceMetric: 0

"Connection Name","Network Adapter","Physical Address","Transport Name"
"Ethernet","Intel(R) PRO/1000 MT Desktop Adapter","08-00-27-12-89-E9","\\Device\\NPF{F0C1F253-3499-4D73-88F5-1FF2687633D1}\\{F0C1F253-3499-4D73-88F5-1FF2687633D1}"
"Ethernet 2","Intel(R) PRO/1000 MT Network Connection #2","08-00-27-3A-3C-FB","\\Device\\NPF{6358AEF5-FF9F-445C-81DB-9BEC6C0D477A}\\{6358AEF5-FF9F-445C-81DB-9BEC6C0D477A}"
"Ethernet 3","Intel(R) PRO/1000 MT Network Connection #3","08-00-27-C4-4E-4F","\\Device\\NPF{A3AC1715-8740-4B8F-8022-FEC68D9BBD6E}\\{A3AC1715-8740-4B8F-8022-FEC68D9BBD6E}"
"Ethernet 4","Intel(R) PRO/1000 MT Network Connection #4","08-00-27-AC-4C-4A","\\Device\\NPF{4CCF6F8E-C1EE-44AF-B0EF-2DC36C1D8A07}\\{4CCF6F8E-C1EE-44AF-B0EF-2DC36C1D8A07}"
```