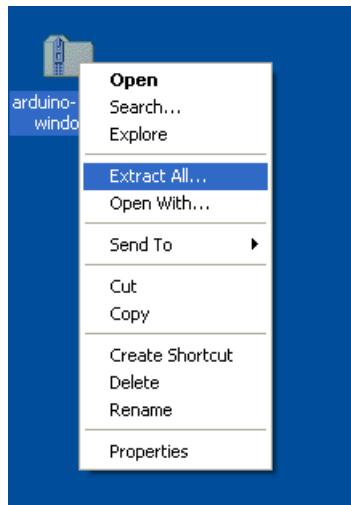


Installing the Arduino Mega Driver on Windows XP

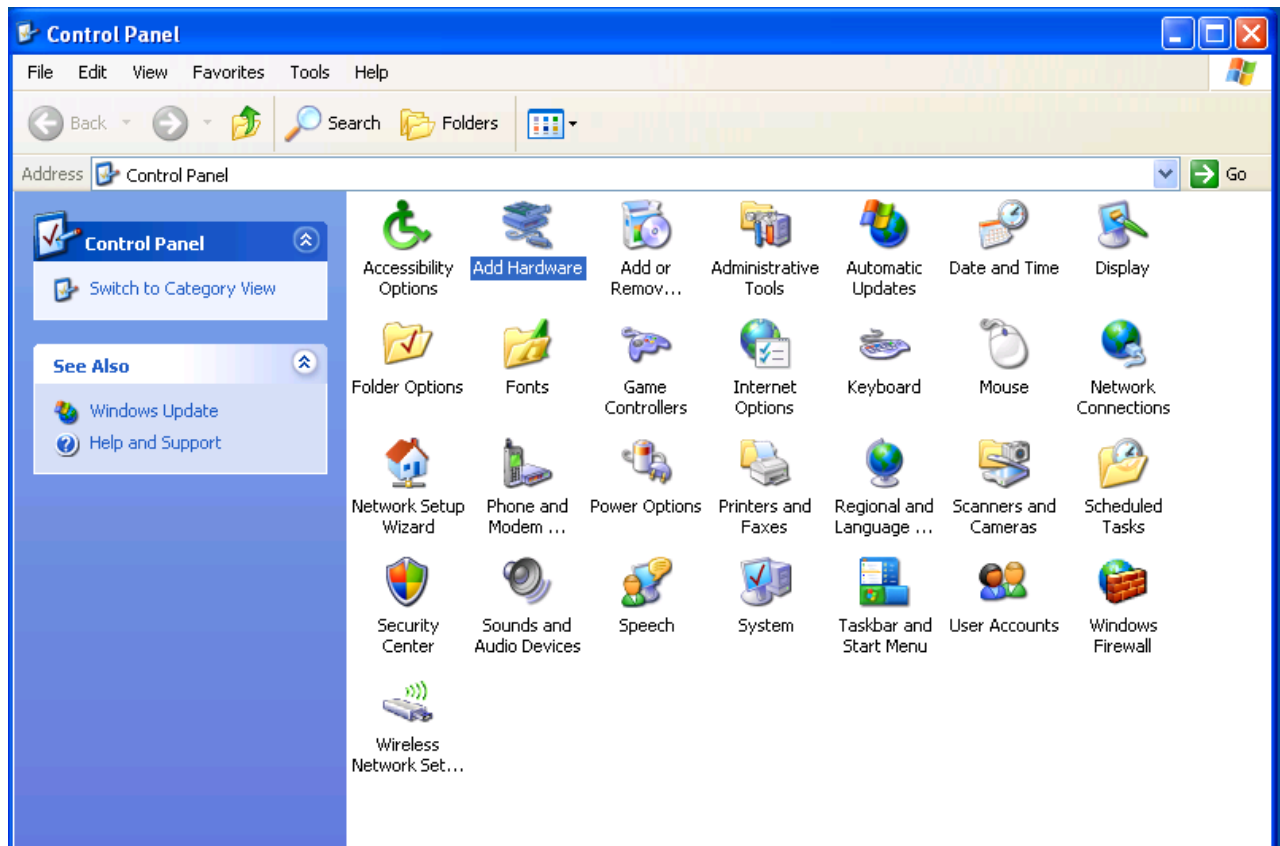
Goal: Installing the the Arduino Mega device driver on Windows XP.

The automatic driver install process for Windows XP might automatically install a Microsoft Windows version of the Arduino Mega driver. This is not the driver LANforge expects. These instructions will guide you how through uninstalling an old driver and installing the new driver.

1. Follow the link to the Arduino project to download the latest driver :[Download Arduino IDE](#) For more information see [Installing LANforge Server on Windows](#)
2. Download the Arduino IDE zip file to your desktop. Use **Right-click→Extract All...** to expand the contents to a folder on your desktop.

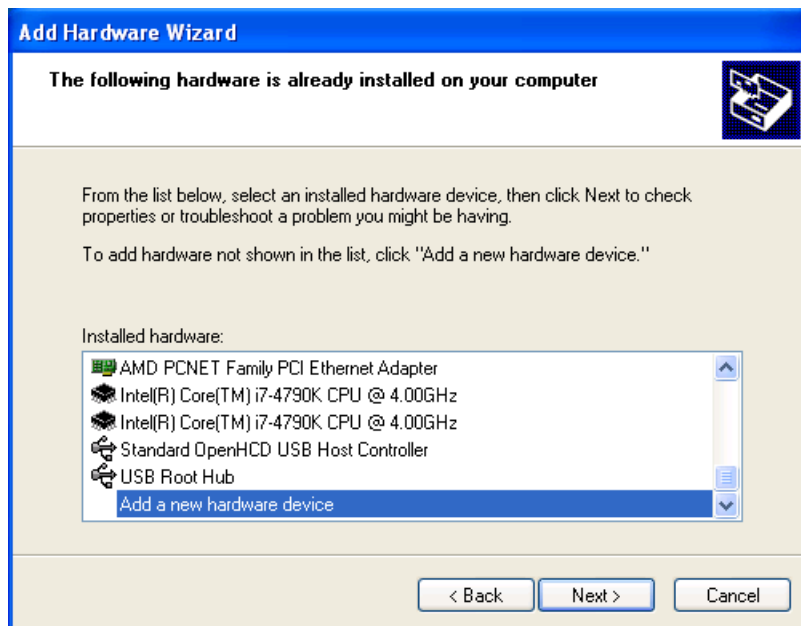


3. Connect USB cable from the Attenuator to the PC
4. Click **Start→Control Panel** and choose the **Add Hardware** option.

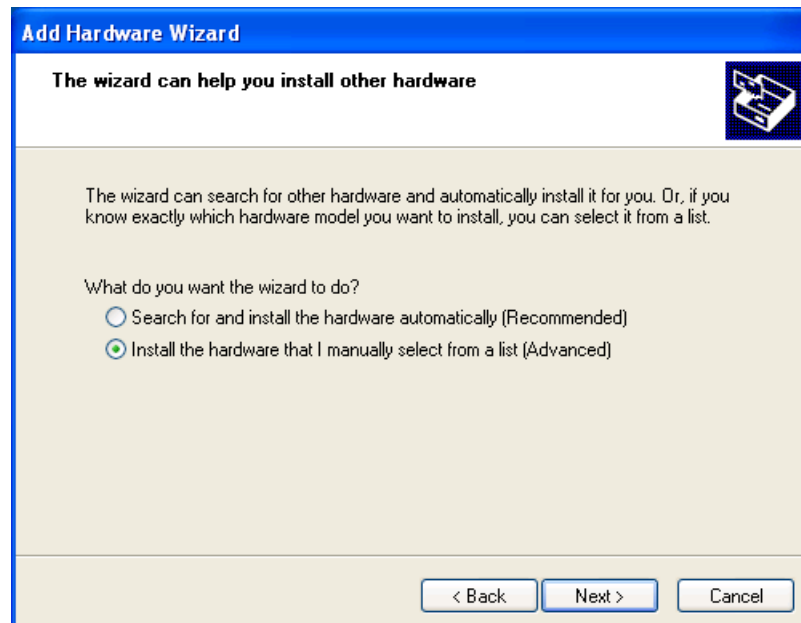


5. In the hardware list page, select *Add a new hardware device*, and click **Next**

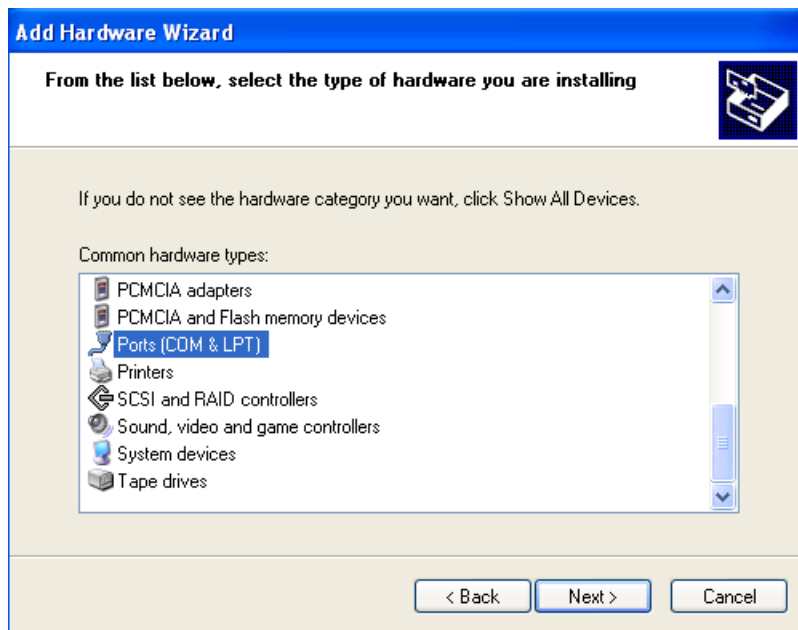




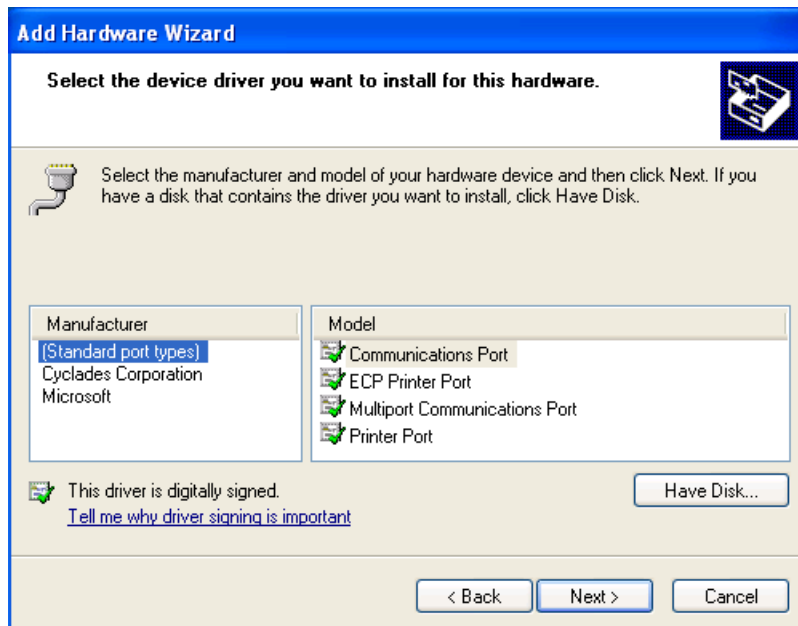
6. Select the *Install the hardware that I manually select* option, and click **Next**



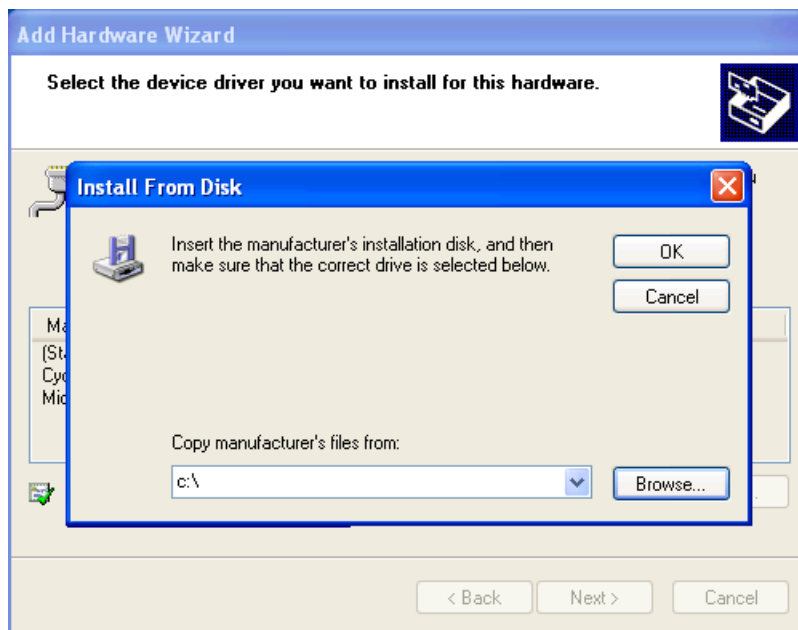
7. Select the *Ports (COM & LPT)* option, and click **Next**



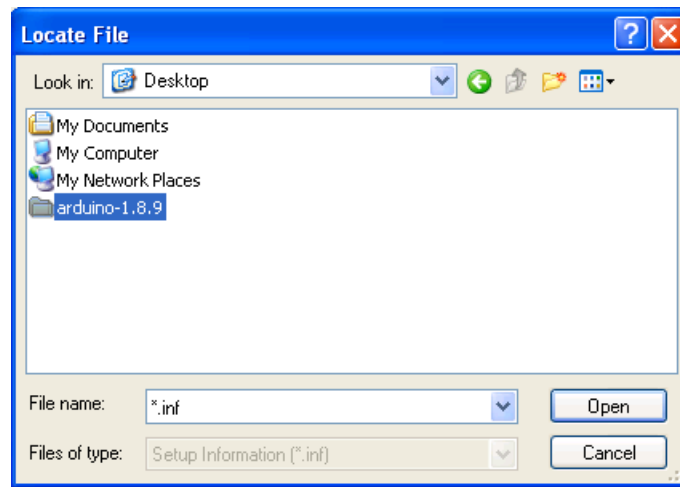
8. Select *(Standard port types)* option, then *Communications Port* and then click **Have Disk...**



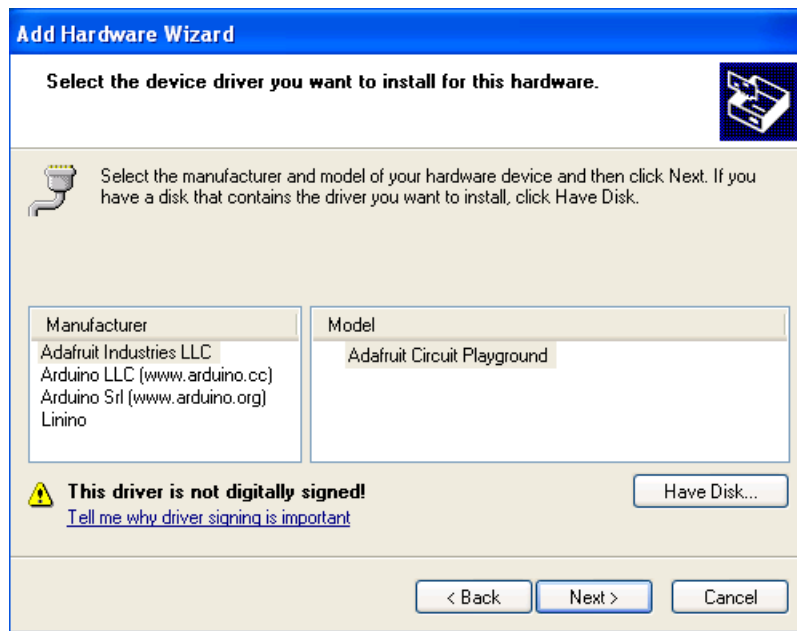
9. Click **Browse**



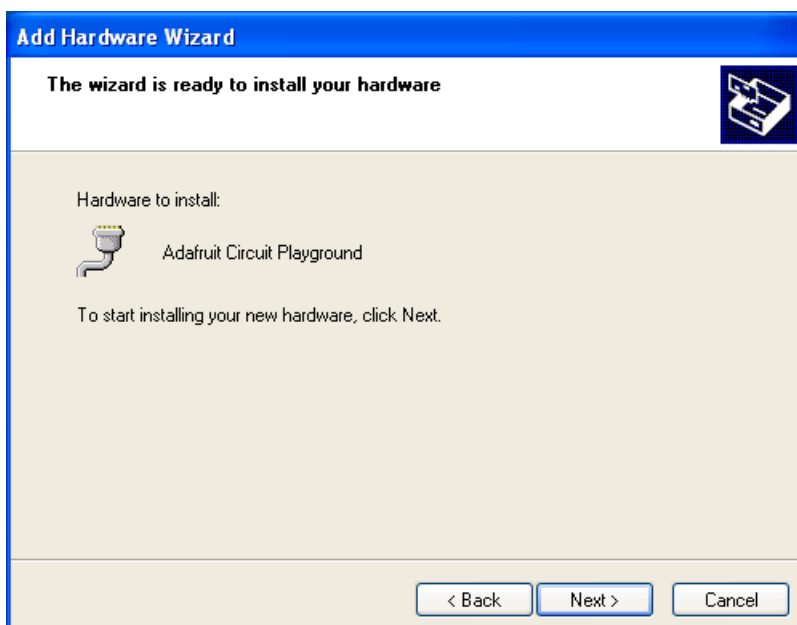
10. Navigate to your `Desktop\arduino-1.8.9\drivers` folder, and click **Open**



11. Click **Next**



12. Click **Next**



13. Click **Continue Anyway**



14. Click **Finish**



15. You should not need to reboot your system in order to run the Attenuator

16. For LANforge to recognize the new attenuator, restart the LANforge server on the machine that has the attenuator connected. On Windows, close the LANforge server CMD windows and then restart LANforge with using your desktop icon.

*Candela Technologies, Inc., 2417 Main Street, Suite 201, Ferndale, WA 98248, USA
www.candela-tech.com | sales@candela-tech.com | +1.360.380.1618*