

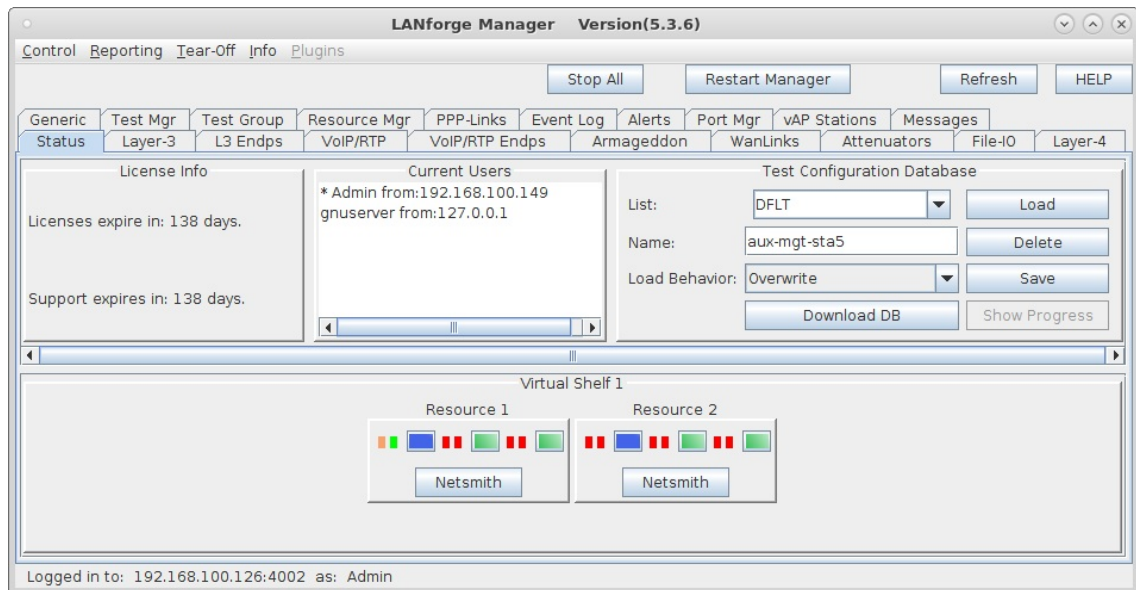
Configure Auxiliary Management Interfaces

Goal: Allow LANforge to create its own wireless management network.

In cases where it is not convenient to use an existing management network, LANforge WiFi systems can be configured to provide their own WiFi management network. This may be especially useful when testing in environments where LANforge needs to be moved around or where you have no good access to existing management LANs. This example assumes that you already know how to create and configure VAP and Stations in LANforge.

1. Configure LANforge for Auxiliary Management.

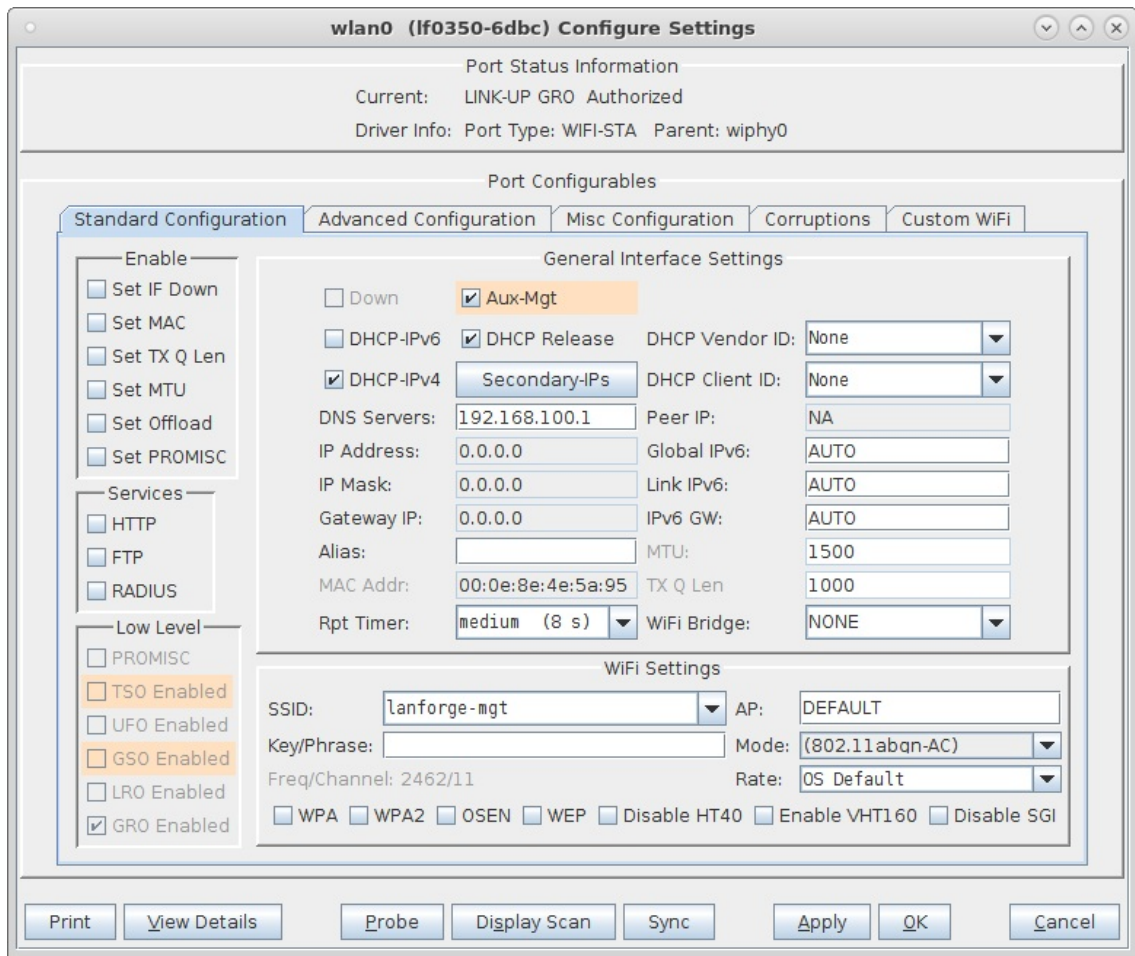
- A. Connect LANforge systems through the normal management LAN for initial configuration. The resources should be visible in the management tab



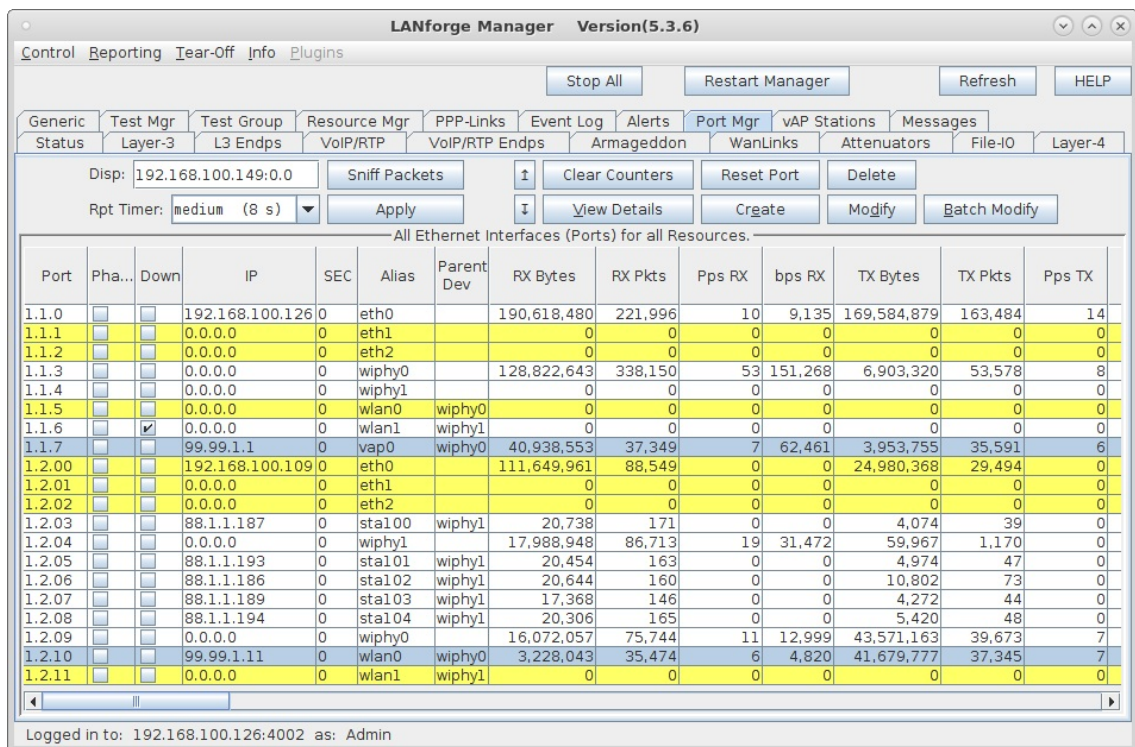
- B. In this case, we are using wiphy0 for the Aux-Mgt interfaces. On the manager system, configure wiphy0 to be on the desired channel, create a virtual AP on wiphy0, and configure it appropriately. The **Aux-Mgt** checkbox should be selected, a static IP should be assigned, and an appropriate SSID configured. The AP Aux-Mgt port will automatically serve DHCP and will try to NAT and route packets to the wired Management interface.

The screenshot shows the configuration window for 'vap0 (If0350-6f84)'. The 'Port Status Information' section shows 'Current: LINK-UP GRO NONE' and 'Driver Info: Port Type: WIFI-AP Parent: wiphy0'. The 'Port Configurables' section has tabs for 'Standard Configuration', 'Advanced Configuration', 'Misc Configuration', and 'Custom WiFi'. The 'Standard Configuration' tab is active, showing 'Enable' options (Set IF Down, Set MAC, Set TX Q Len, Set MTU, Set Offload, Set PROMISC) and 'Services' (HTTP, FTP). The 'General Interface Settings' section includes 'Down' (unchecked), 'Aux-Mgt' (checked), 'DHCP-IPv6' (unchecked), 'DHCP Release' (checked), 'DHCP Vendor ID' (None), 'DHCP-IPv4' (unchecked), 'Secondary-IPs' (button), 'DHCP Client ID' (None), 'DNS Servers' (BLANK), 'Peer IP' (NA), 'IP Address' (99.99.1.1), 'Global IPv6' (AUTO), 'IP Mask' (255.255.255.0), 'Link IPv6' (AUTO), 'Gateway IP' (0.0.0.0), 'IPv6 GW' (AUTO), 'Alias' (empty), 'MTU' (1500), 'MAC Addr' (00:0e:8e:75:3d:8d), 'TX Q Len' (1000), 'Rpt Timer' (medium (8 s)), and 'WiFi Bridge' (NONE). The 'WiFi Settings' section includes 'SSID' (lanforge-mgt), 'AP' (DEFAULT), 'Key/Phrase' (empty), 'Mode' ((802.11abgn-AC)), 'Freq/Channel' (2462/11), 'Rate' (OS Default), 'DTIM-Period' (2), 'Max-STA' (2007), 'Beacon' (240), and checkboxes for WPA, WPA2, OSEN, WEP, Disable HT40, Disable HT80, Enable VHT160, Disable SGI, and Verbose Debug.

- C. On the other resources, configure the wlanX interface to connect to the AP on the manager system, and select the **Aux-Mgt** checkbox.



- D. The Port-Mgr tab should look something like this when the Aux-Management interfaces are configured.



- E. To test that it works properly, you can now remove the wired Managment port connection and wait about 1 minute for the old connection to time out and re-connect to the Auxiliary Management port. Or, just reboot systems with the wired ports unplugged and they should be discovered on the Aux-Mgt ports promptly.

