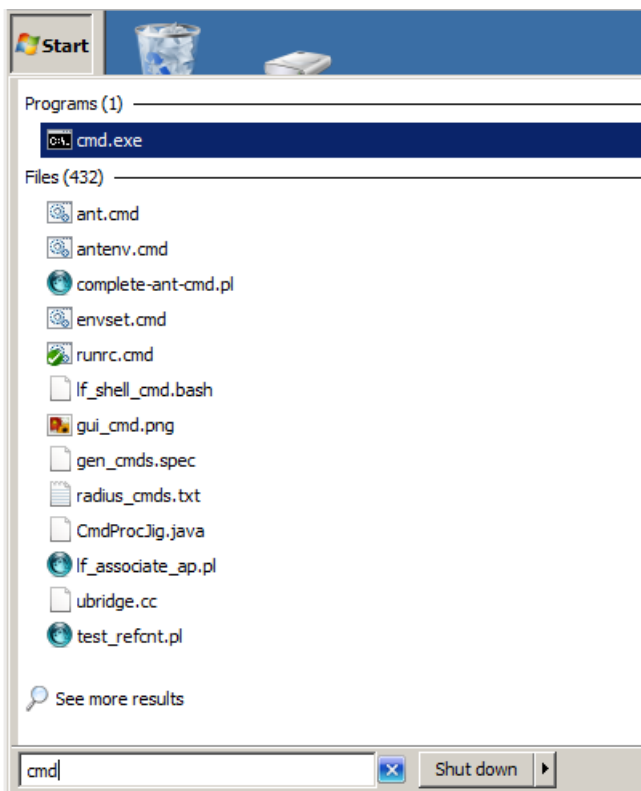


Customizing DOS Window Settings

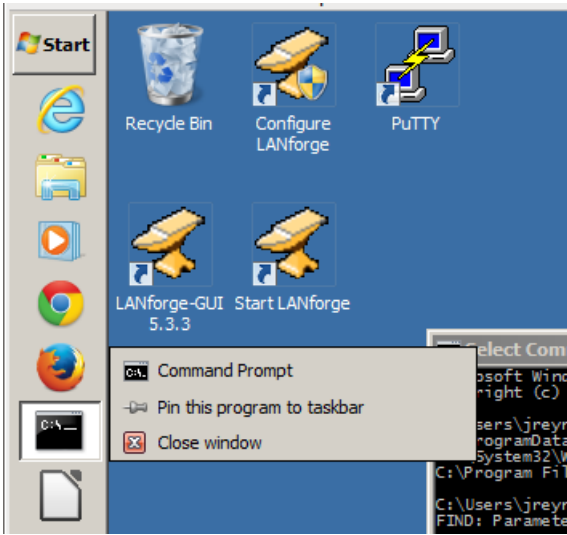
Goal: Make your DOS windows large and do cut and paste easier.
Here we review DOS window settings that will help you to work faster.



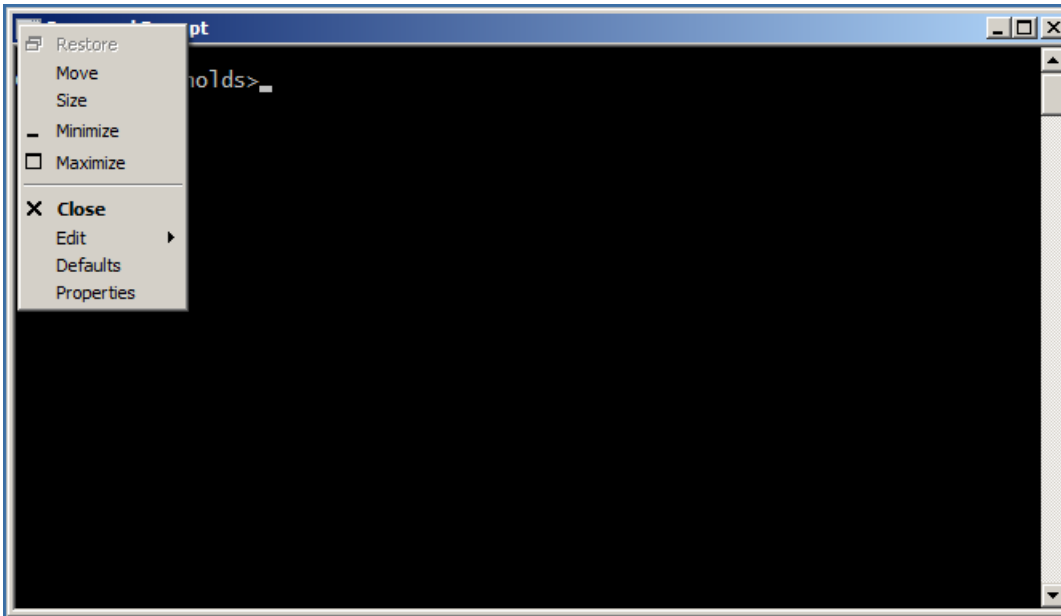
1. Customizing DOS Window Settings starts by right clicking the **Start Menu**
2. Type in `cmd` and hit **Enter**



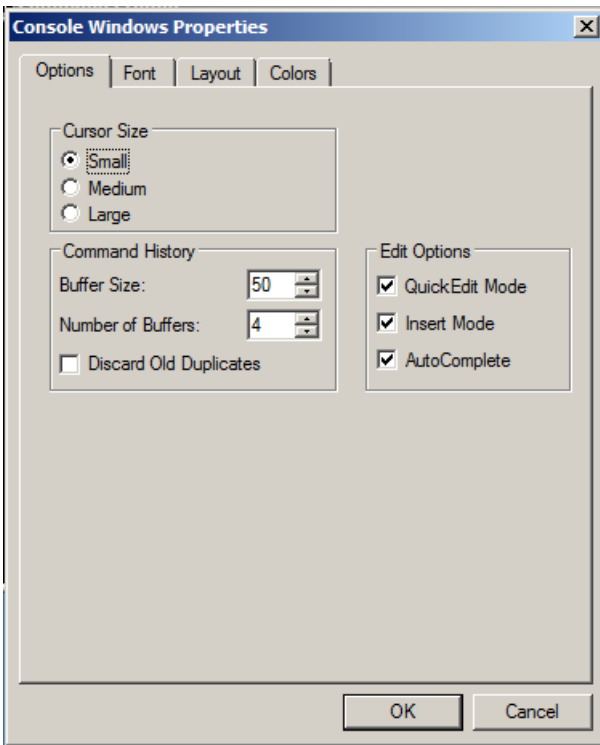
3. To get to your DOS window faster, you can pin it to your task bar. *Right click* the task bar CMD window icon and select **Pin this program to taskbar**



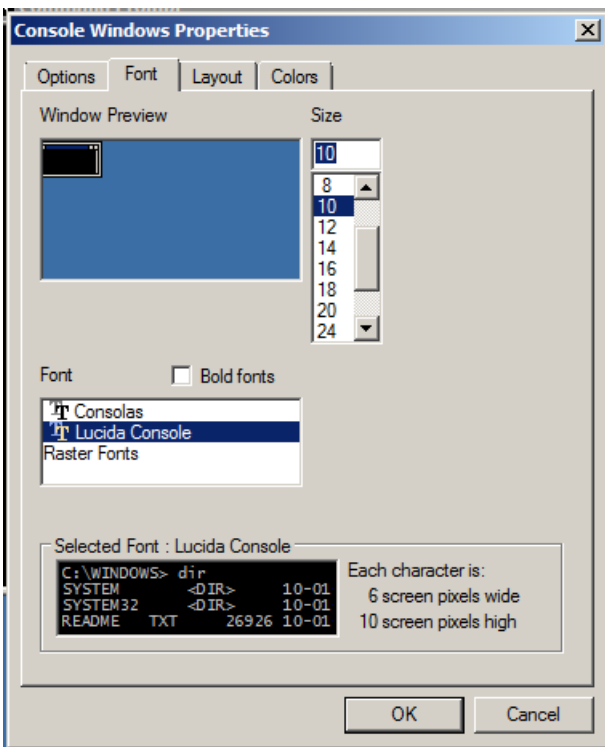
4. On the DOS window title bar, *Right click* and select the **Defaults** menu item



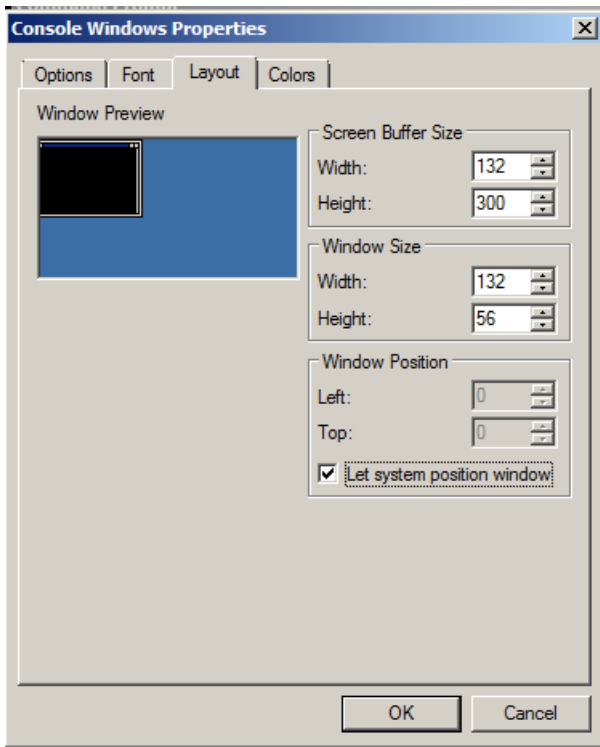
5. Select the *Quick Edit Mode* setting. This allows you to highlight text in the window easily.



6. In the **Font** tab, select a slimmer TrueType font, like *Consolas* or *Lucida Console*, and set the font size to **10**



7. In the **Layout** tab, change the *Window Size* to 132 columns and 56 rows



8. Click **OK** to save. The next DOS window you open will appear with your customized settings.

*Candela Technologies, Inc., 2417 Main Street, Suite 201, Ferndale, WA 98248, USA
www.candelatech.com | sales@candelatech.com | +1.360.380.1618*