

## Windows IP Addresses

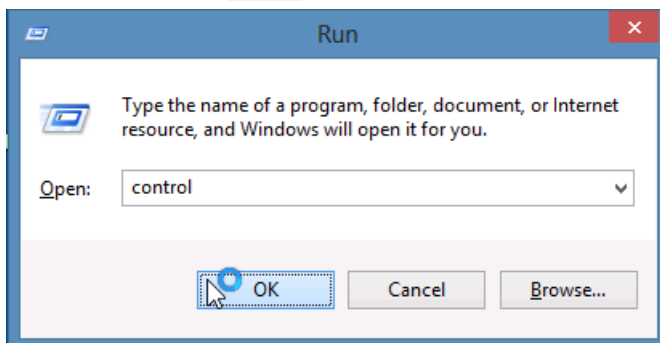
**Goal:** Find and change network ip addresses on Microsoft Windows.  
Here are some techniques for finding and setting IP addresses on Microsoft Windows using the Control Panel and the command line.



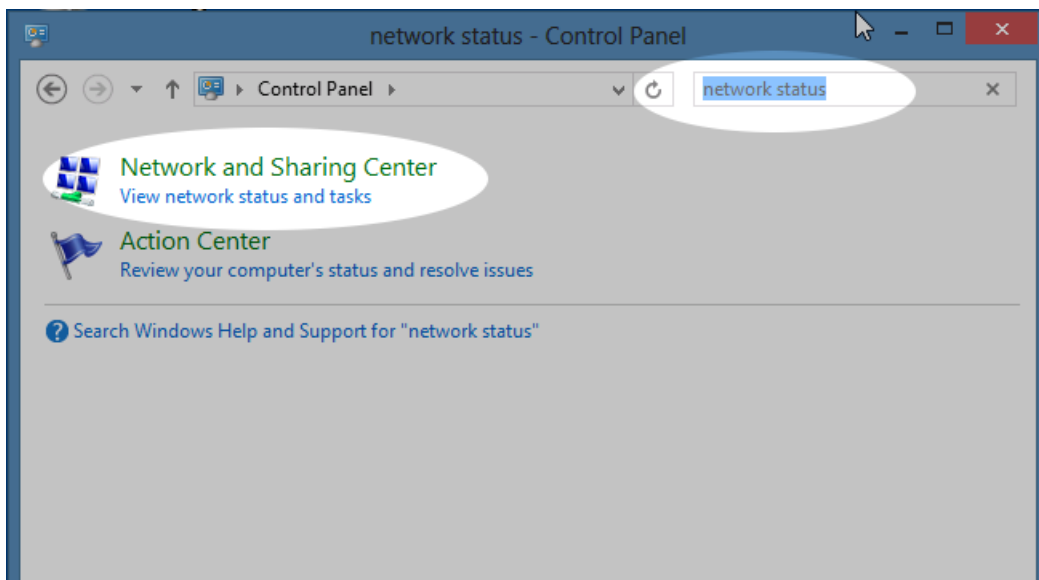
1. Find the IP Address of the Windows PC. There are two methods you can use:

A. Using the *Control Panel*:

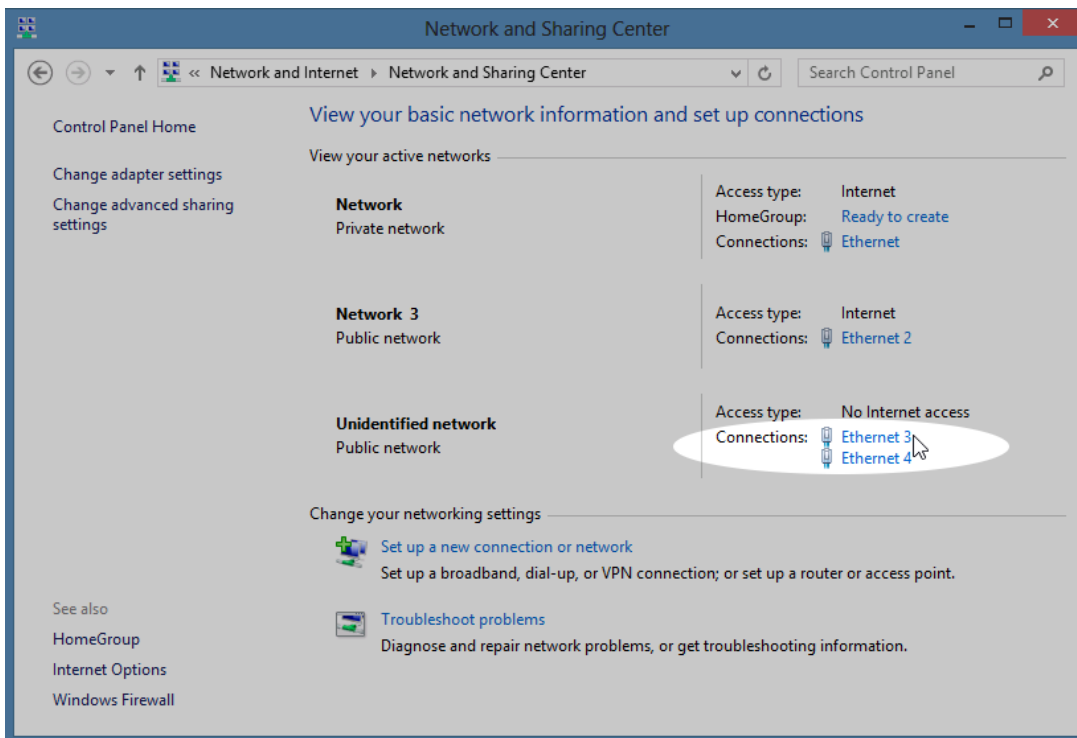
A. Click *Start*, *Run*, `control`, [enter]



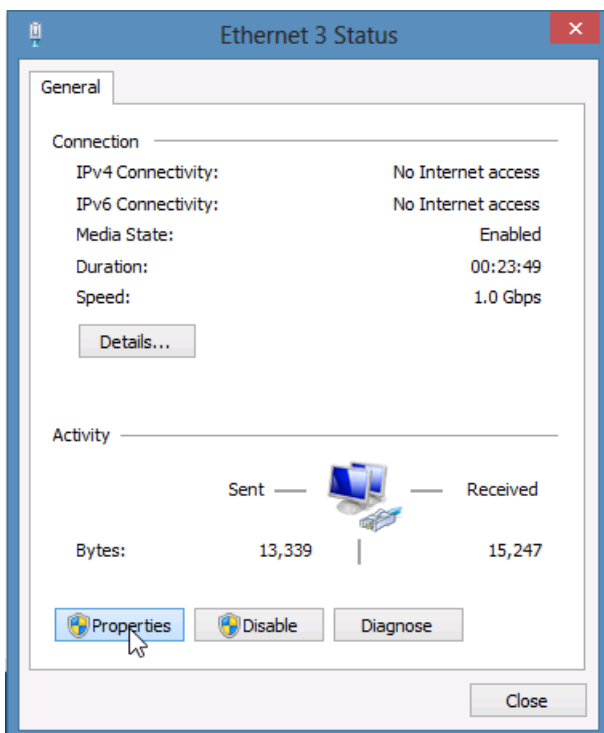
B. Search and select *Network Status and Devices*



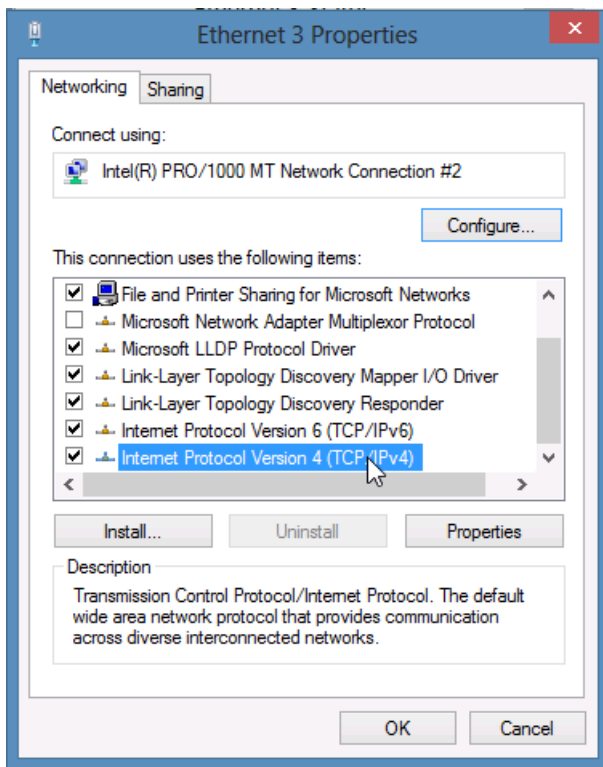
C. We click on our device, **Ethernet 3**:



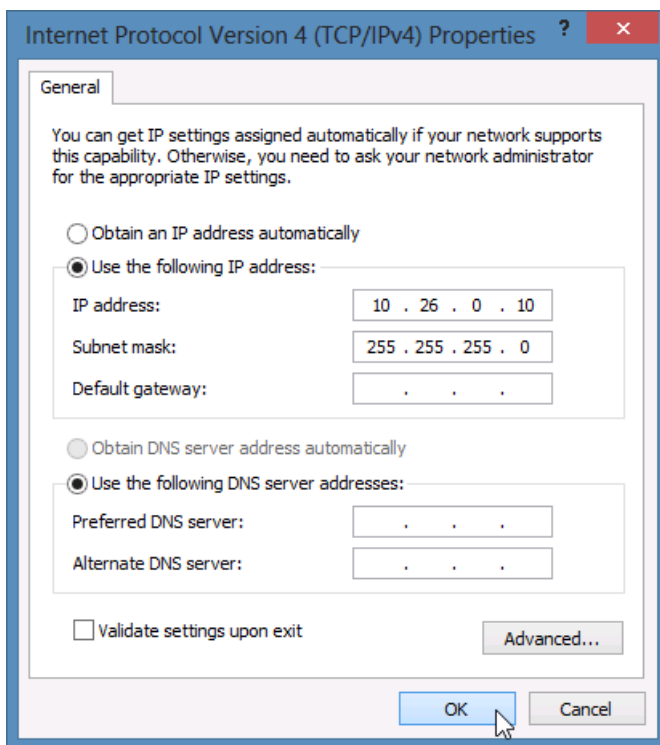
D. Find and/or set the IP address: from *Status*, click **Properties**



E. double click **TCP/IPv4**



F. you will see and can change the IP address.:



B. Various *DOS commands* to find the IP addresses on the system:

- A. `ipconfig` and `ipconfig /all`
- B. `netsh interface ipv4 show address`

C. Resetting your DHCP address via command line:

- A. `ipconfig /release`
- B. `ipconfig /renew`