

Installing the Arduino Mega Driver on Windows 7

Goal: Installing the the Arduino Mega device driver on Windows 7.

LANforge CT70x attenuators require recently signed Arduino drivers. The automatic driver install process for Windows 7 might automatically install a Microsoft Windows version of the Arduino Mega driver. This is not the driver LANforge expects. These instructions will guide you how through uninstalling an old driver and installing the new driver from the Arduino website.

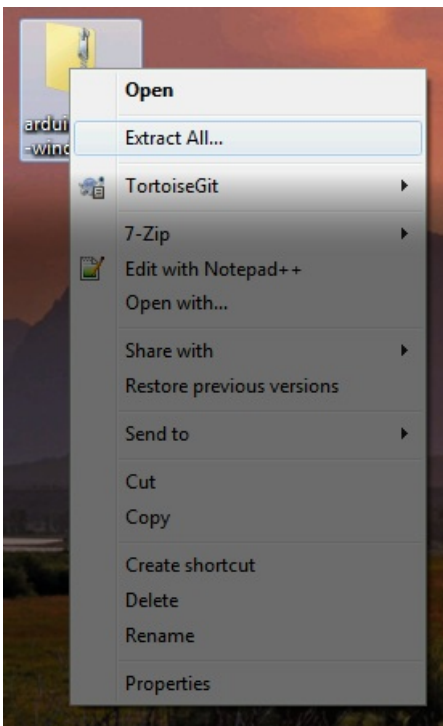
i If you have recently removed a driver, you might need to reboot your Windows system for it to complete the driver installation process.

1. You want to install the windows version of the LANforge Server beforehand. For more information see [Installing LANforge Server on Windows](#)
2. Follow the link to the Arduino project to download the latest driver :[Download Arduino IDE](#)



The screenshot shows a web browser window with the URL <https://www.arduino.cc/en/Main/Software>. The page title is "Download the Arduino IDE". On the left, there is a large circular logo with a minus sign and a plus sign. To the right of the logo, the text reads "ARDUINO 1.8.9" followed by a description: "The open-source Arduino Software (IDE) makes it easy to write code and upload it to the board. It runs on Windows, Mac OS X, and Linux. The environment is written in Java and based on Processing and other open-source software. This software can be used with any Arduino board. Refer to the [Getting Started](#) page for Installation instructions." On the right side of the page, there are four download options: "Windows Installer, for Windows XP and up", "Windows ZIP file for non admin install", "Windows app Requires Win 8.1 or 10" (with a "Get" button), and "Mac OS X 10.8 Mountain Lion or newer". Below these are links for "Linux 32 bits", "Linux 64 bits", "Linux ARM 32 bits", and "Linux ARM 64 bits".

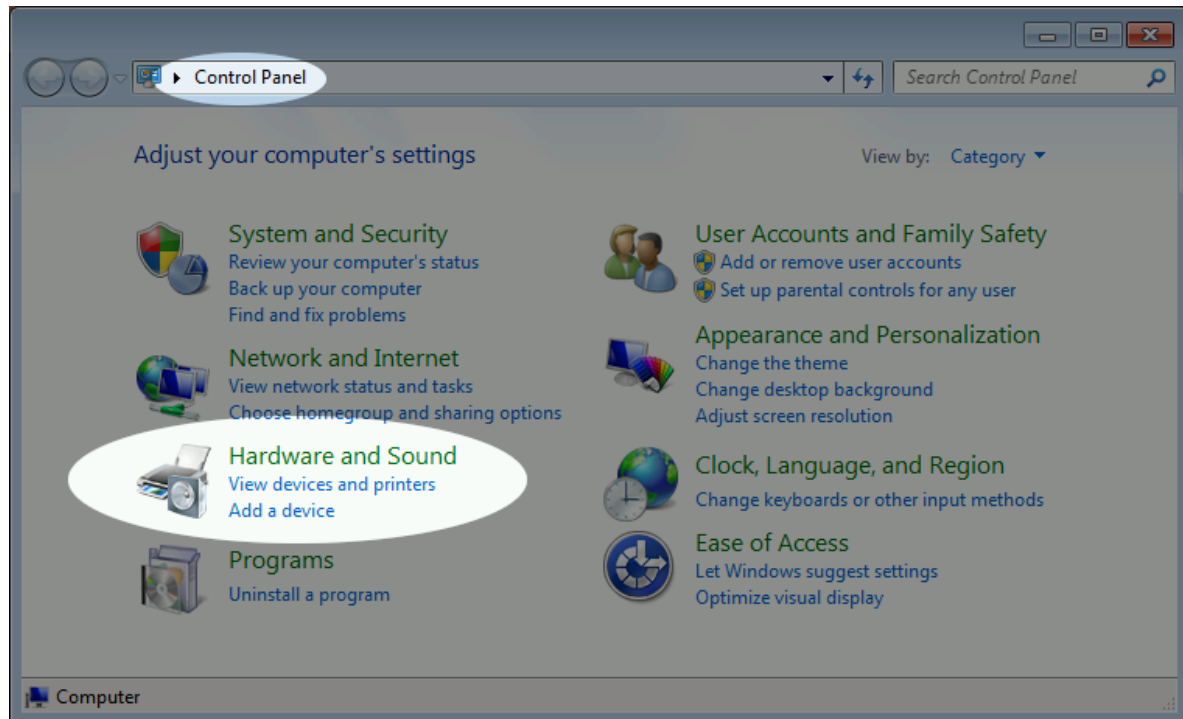
3. Download the Arduino IDE zip file to your desktop. Use **Right-click→Extract All...** to expand the contents to a folder on your desktop.



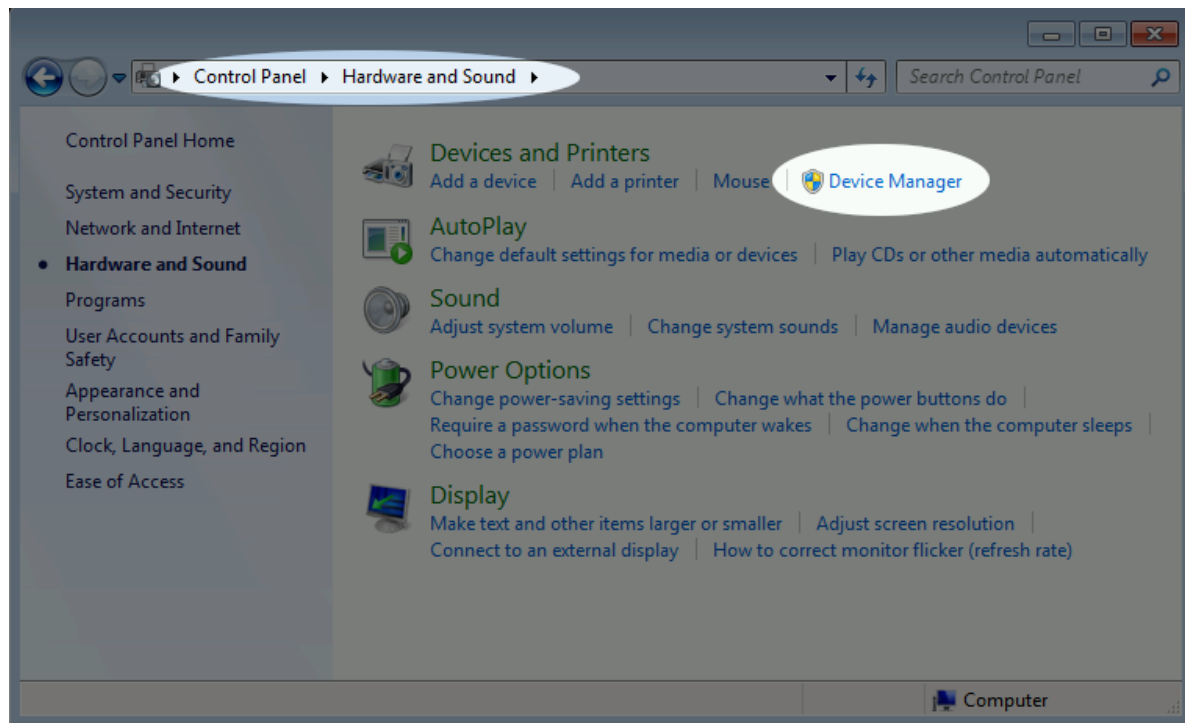
4. This process requires you to operate the Control Panel as Administrator. Some patch-levels of Windows 7 have secured this. A useful work around for this will be discussed shortly.

5. Getting to the **Device Manager**

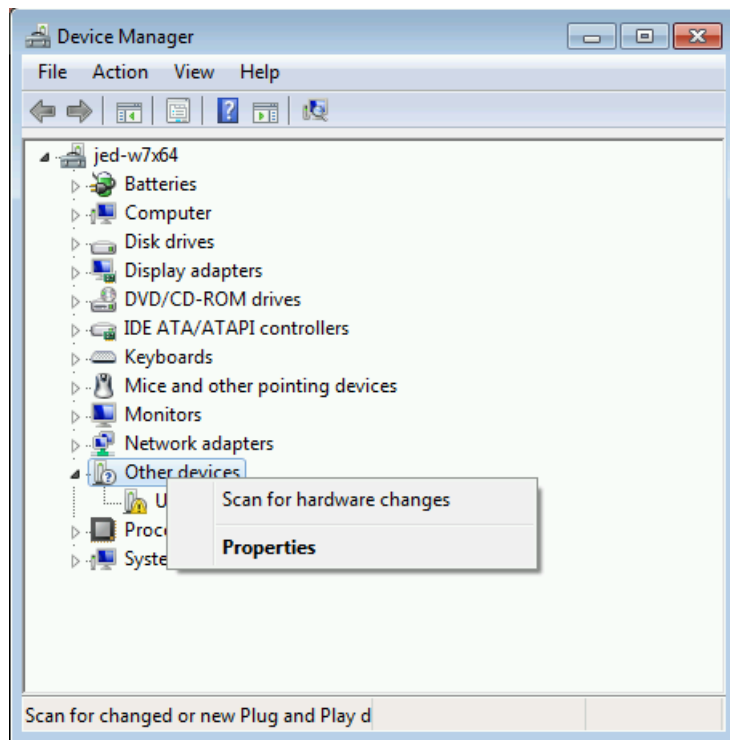
A. In *Control Panel*, select **Hardware and Sound**



B. Select **Device Manager**



C. In the Device Manager window, *right-click* on the computer and select **Scan for hardware changes**

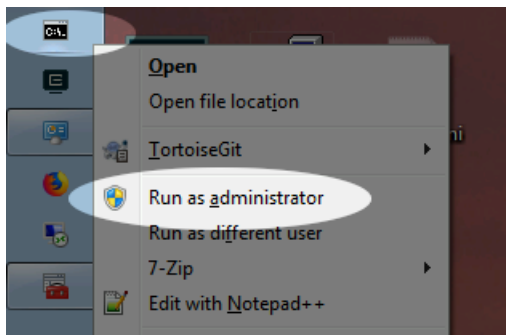


A. There will be an **Other devices**→**Unknown Device** entry. *Right-click* on it. If the options menu **only** gives you either *Scan for hardware changes* or *Properties*, you might need to restart your control panel as Administrator, that is discussed next.

B. **Using the Run as Administrator option to start the Control Panel in administrator mode.**

I. This works best with a **CMD** window pinned to the task bar. You can do that using *Start Menu*→ **cmd** [ENTER]; and then *right-click*→ **Pin to Task Bar** option on the task bar icon for the cmd.exe window.

II. Then *right-click*→ **Run as Administrator** on the **CMD** taskbar icon

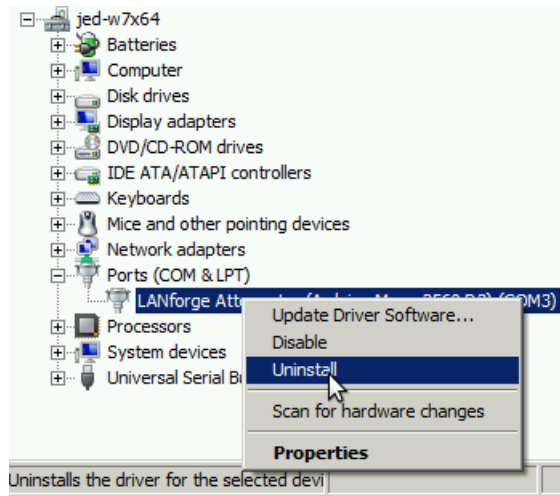


III. Repeat your navigation steps to get to the **Device Manager**

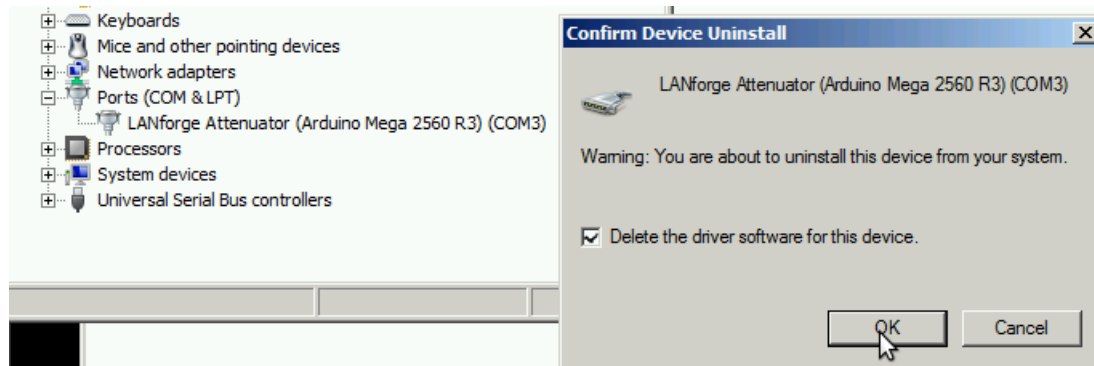
6. Uninstall Old Driver

If you find a previously installed driver, uninstall it. Especially if this is labeled **Windows Arduino Mega**

A. *Right-click* → **Uninstall**



B. Select *Delete the driver software for this device*, and click **OK**



C. *Right-click* on the computer, and select **Scan for Hardware Changes**

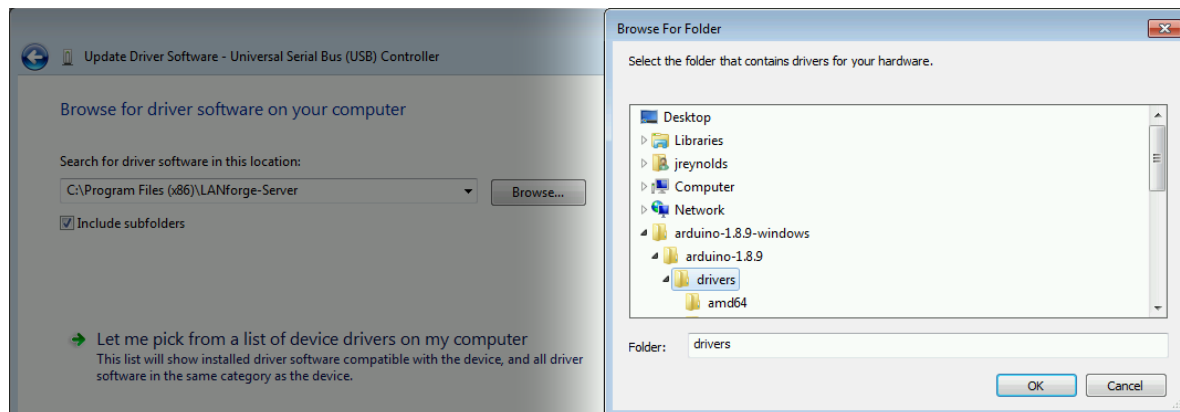
D. You might need to un-plug and plug-in your Attenuator.

E. If the *right-click* options menu does not allow you to change drivers, reboot your system.

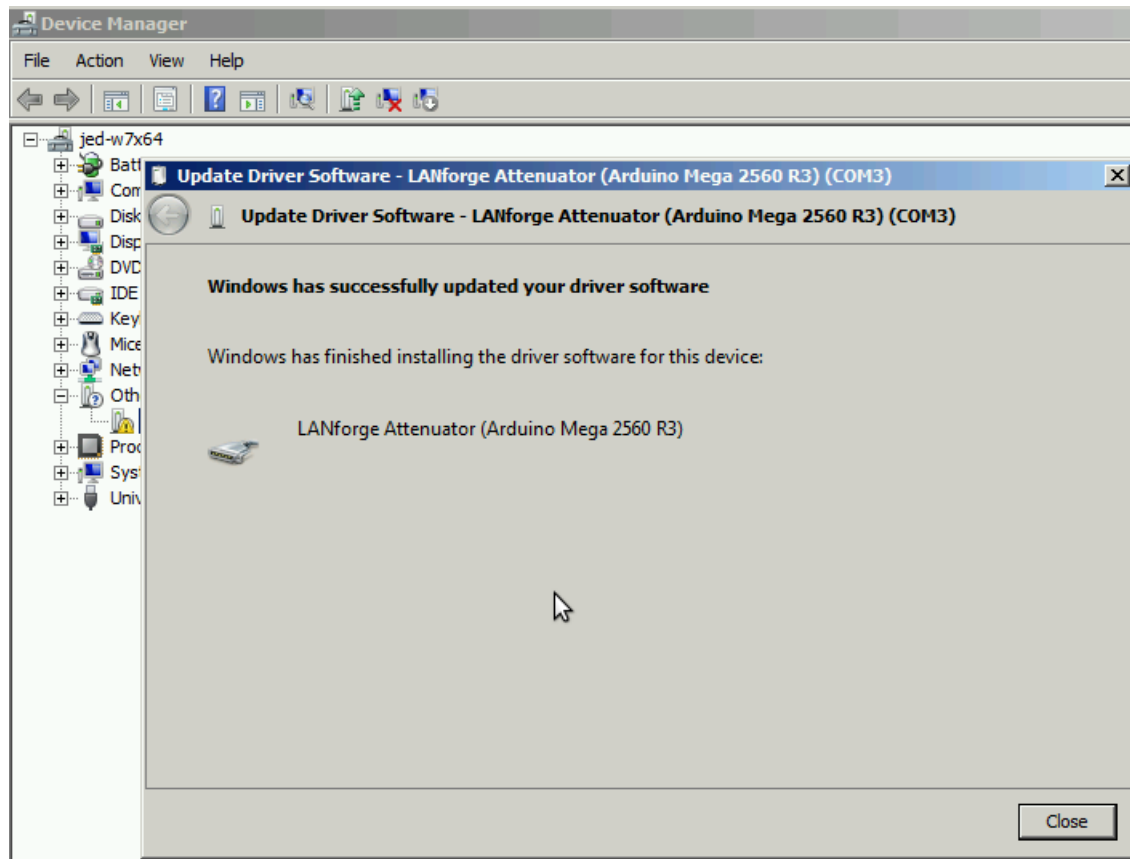
7. Install new driver

Select **Browse my computer for driver software**

A. Browse to `Desktop\arduino-1.8.9\drivers` and click **Next**



B. You will see the Update Driver Software confirmation. Click **Close**.



8. You should not need to reboot your system in order to run the Attenuator.

*Candela Technologies, Inc., 2417 Main Street, Suite 201, Ferndale, WA 98248, USA
www.candelatech.com | sales@candelatech.com | +1.360.380.1618*