

## Installing the Arduino Mega Driver on Windows 10

**Goal:** Installing the the Arduino Mega device driver on Windows 10.

LANforge CT70x attenuators require recently signed Arduino drivers. The automatic driver install process for Windows 10 might automatically install a Microsoft Windows version of the Arduino Mega driver. This is not the driver LANforge expects. These instructions will guide you how through uninstalling an old driver and installing the new driver from the Arduino website.

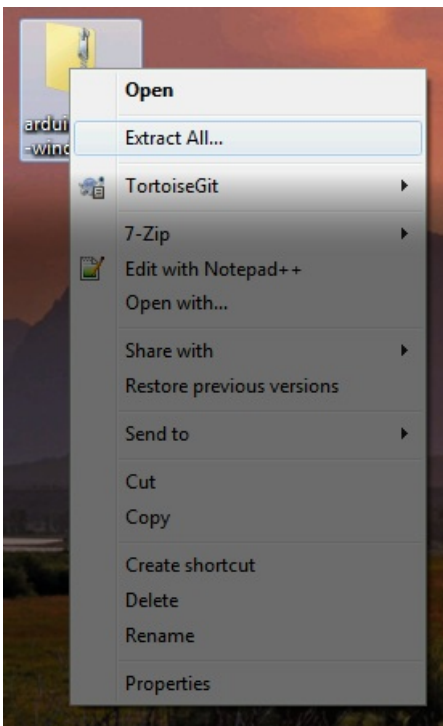
**i** If you have recently removed a driver, you might need to reboot your Windows system for it to complete the driver installation process.

1. You want to install the windows version of the LANforge Server beforehand. For more information see [Installing LANforge Server on Windows](#)
2. Follow the link to the Arduino project to download the latest driver :[Download Arduino IDE](#)

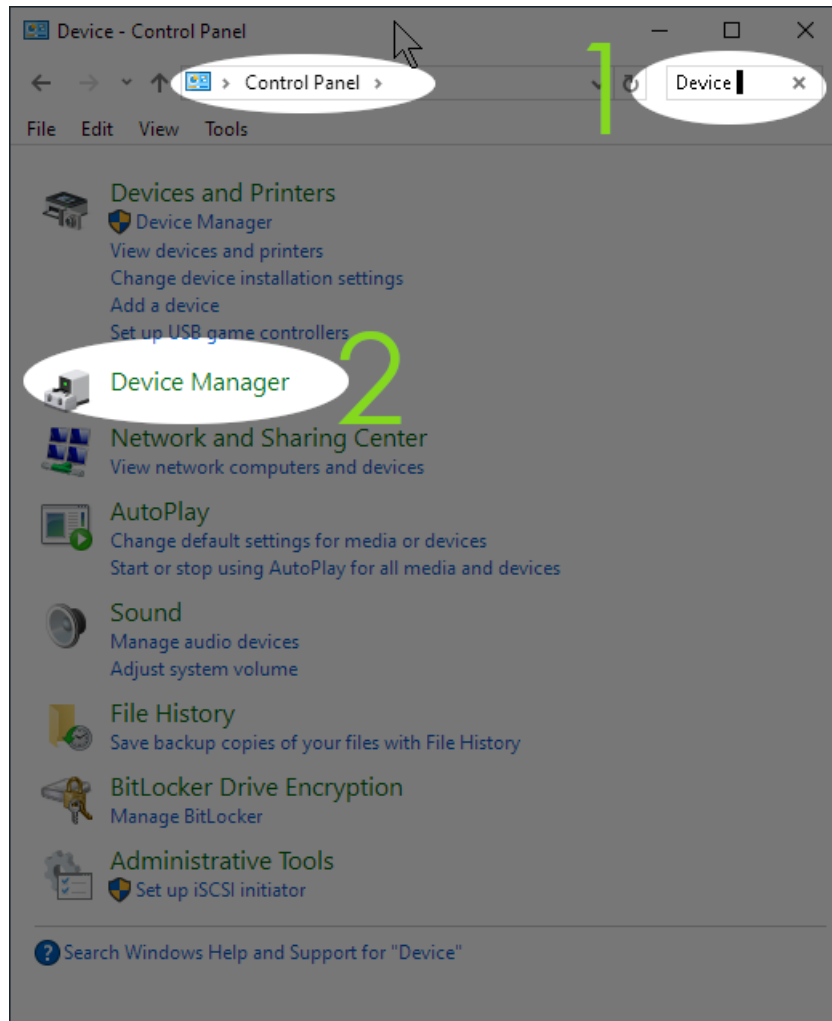


The screenshot shows a web browser window with the URL <https://www.arduino.cc/en/Main/Software>. The page title is "Download the Arduino IDE". On the left, there is a large circular logo with a minus sign and a plus sign. To the right of the logo, the text reads "ARDUINO 1.8.9" followed by a description: "The open-source Arduino Software (IDE) makes it easy to write code and upload it to the board. It runs on Windows, Mac OS X, and Linux. The environment is written in Java and based on Processing and other open-source software. This software can be used with any Arduino board. Refer to the [Getting Started](#) page for Installation instructions." On the right side of the page, there are several download options: "Windows Installer, for Windows XP and up", "Windows ZIP file for non admin install", "Windows app Requires Win 8.1 or 10" with a "Get" button, "Mac OS X 10.8 Mountain Lion or newer", "Linux 32 bits", "Linux 64 bits", "Linux ARM 32 bits", and "Linux ARM 64 bits".

3. Download the Arduino IDE zip file to your desktop. Use **Right-click→Extract All...** to expand the contents to a folder on your desktop.

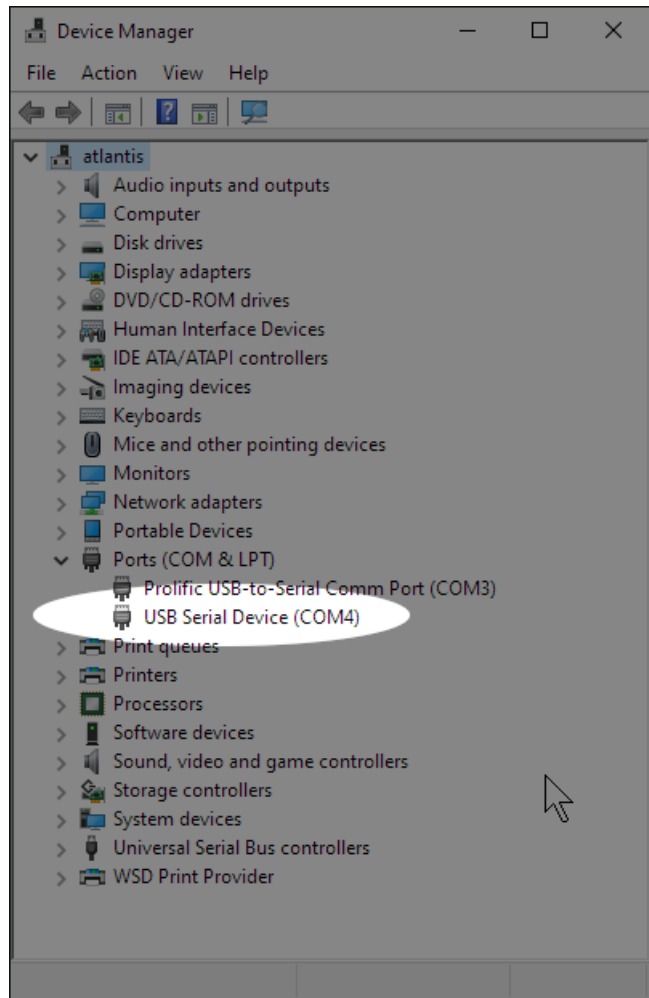


4. This process requires you to operate the Control Panel as Administrator.
5. Getting to the **Device Manager**
  - A. Type **Control-F** for Find
  - B. Search for **Device**



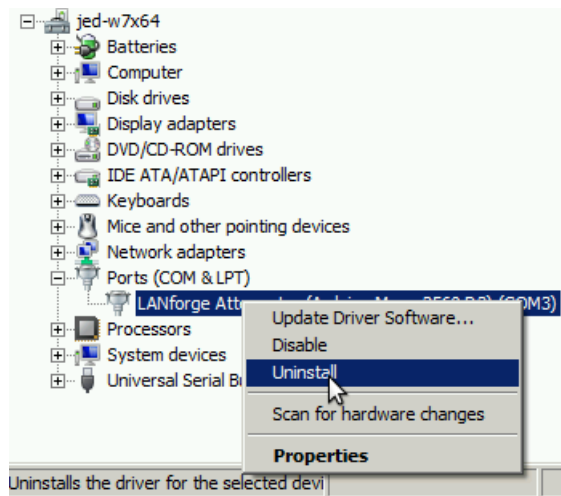
- C. Select **Device Manager**

D. In the Device Manager window, *right-click* on the computer and select **Scan for hardware changes**

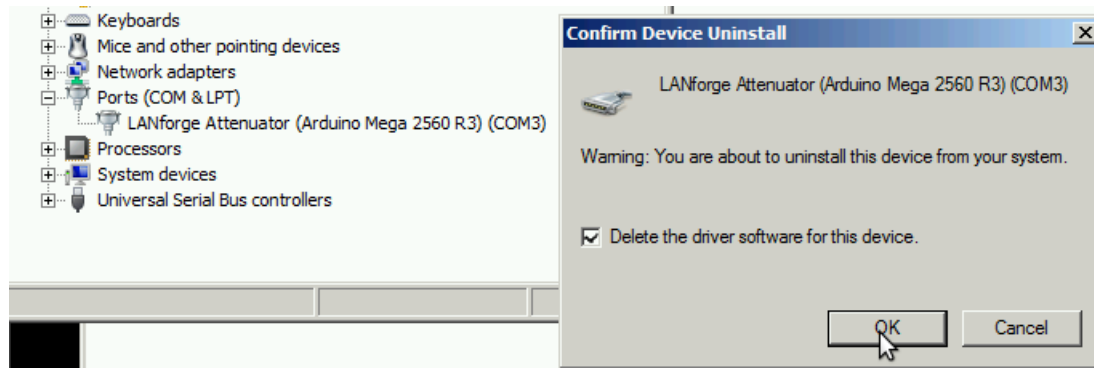


6. If you find a previously installed driver, uninstall it. Especially if this is labeled **Windows Arduino Mega**

A. *Right-click* → **Uninstall**



B. Select *Delete the driver software for this device*, and click **OK**



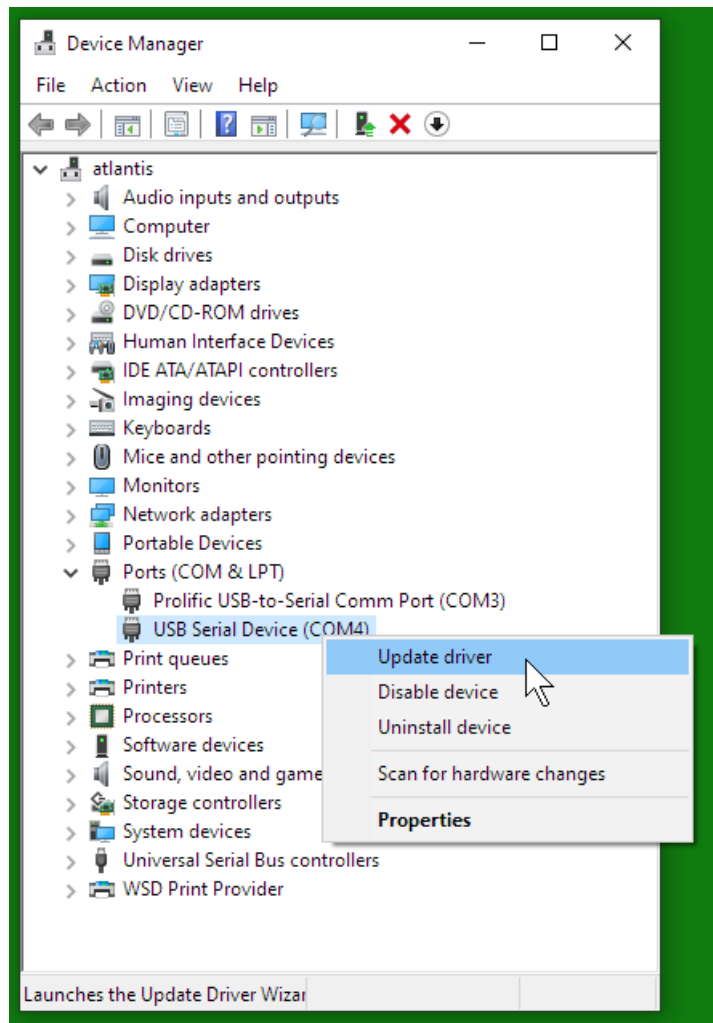
C. *Right-click* on the computer, and select **Scan for Hardware Changes**

D. You might need to un-plug and plug-in your Attenuator.

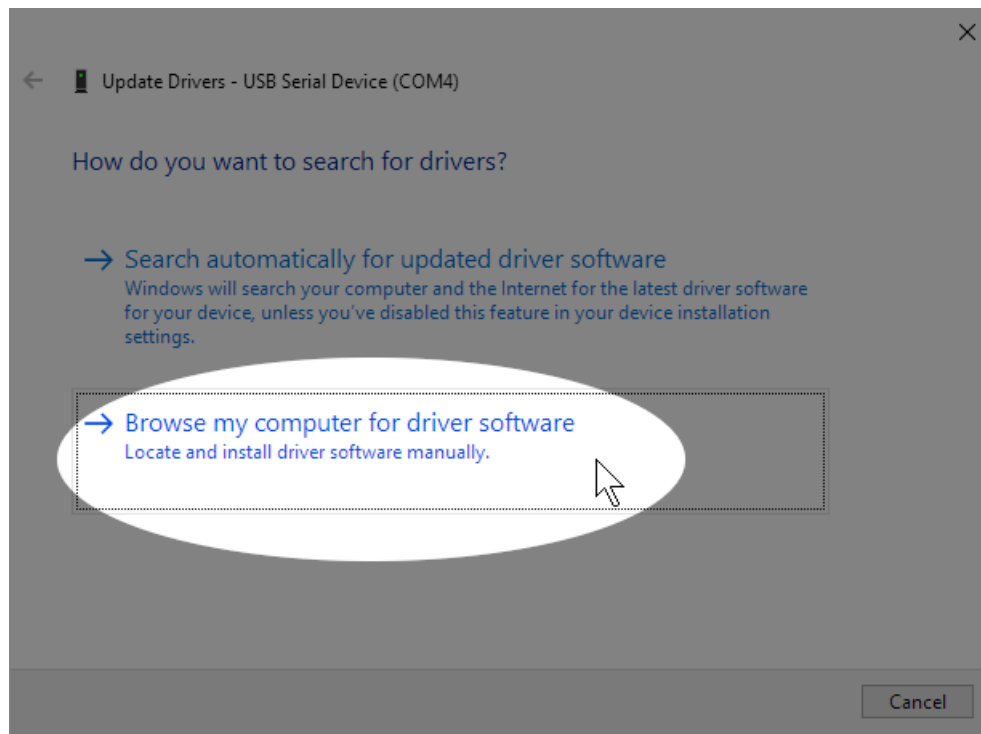
E. If the *right-click* options menu does not allow you to change drivers, reboot your system.

## 7. Install the Arduino IDE Driver

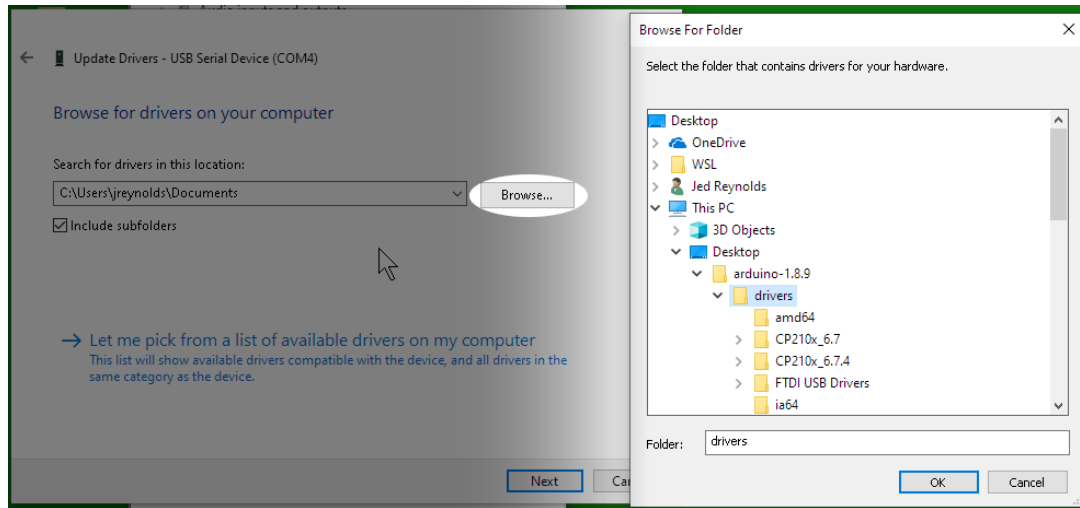
A. In **Device Manager**, you want *right-click* on the **Unknown Device** and select **Update Driver Software...**



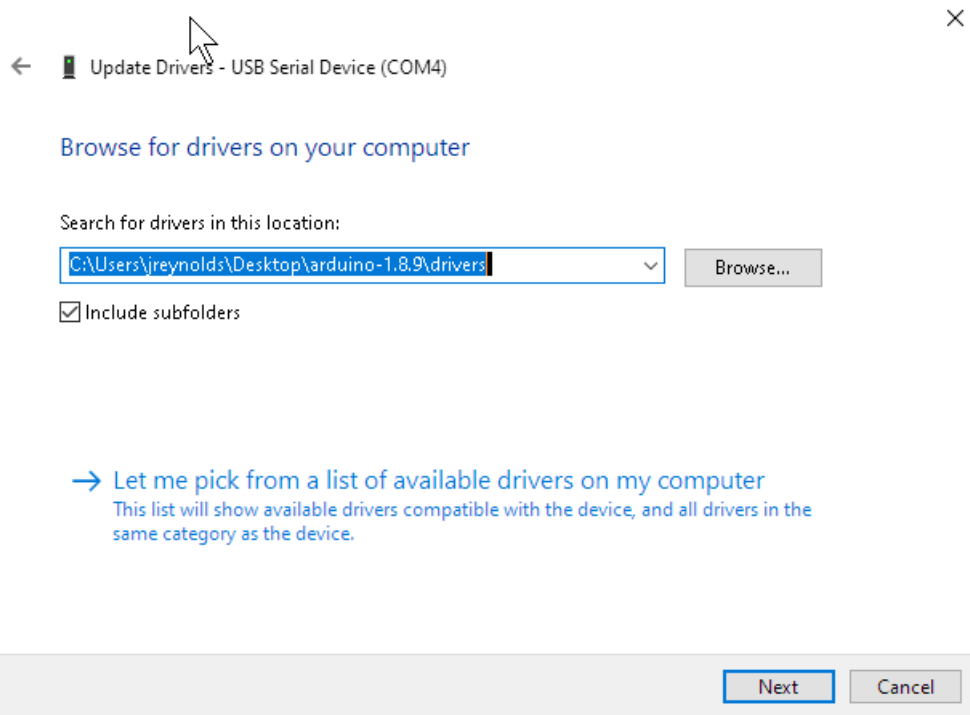
B. Select **Browse my computer for driver software** :



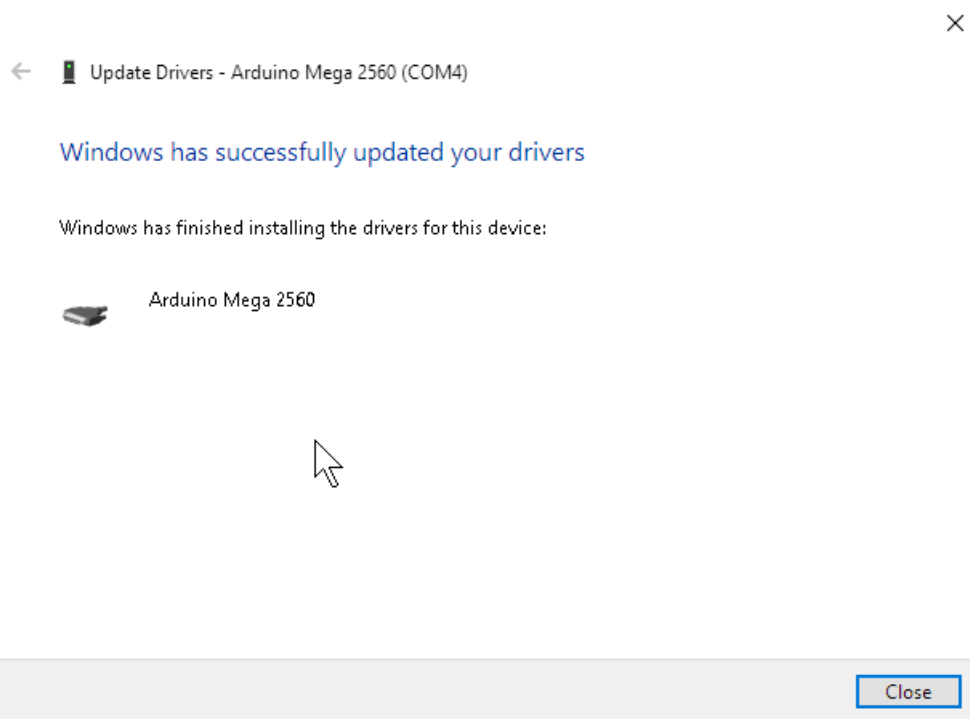
A. Browse to `Desktop\arduino-1.8.9\drivers` and click **OK**



B. Click **Next**



C. You will see the Update Driver Software confirmation. Click **Close**.



C. You should not need to reboot your system in order to run the Attenuator.