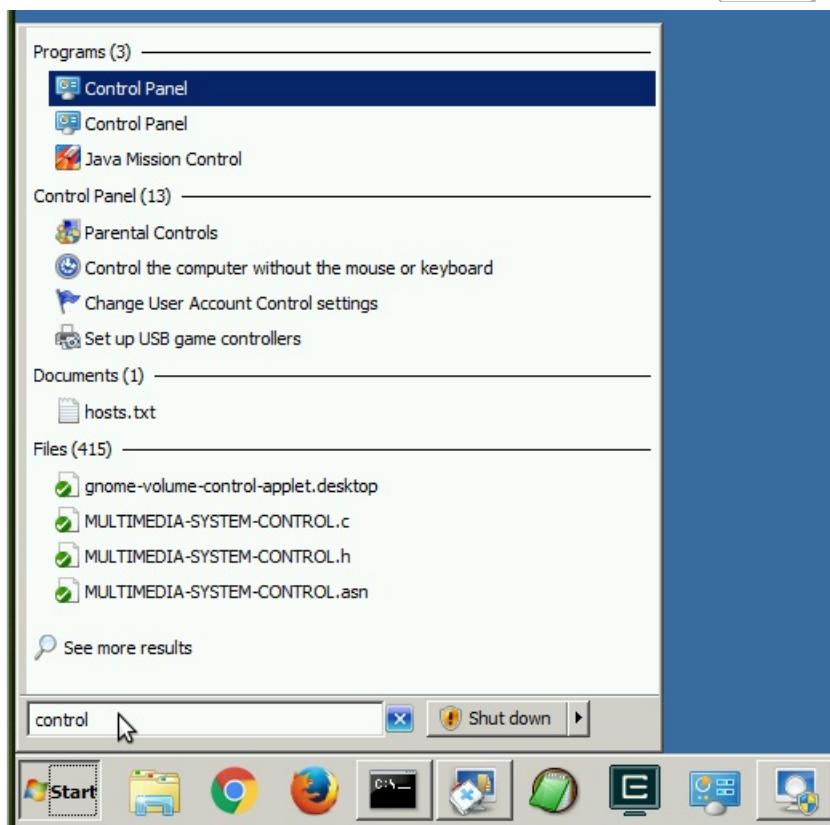


## Installing the Arduino Mega Driver on Windows 7

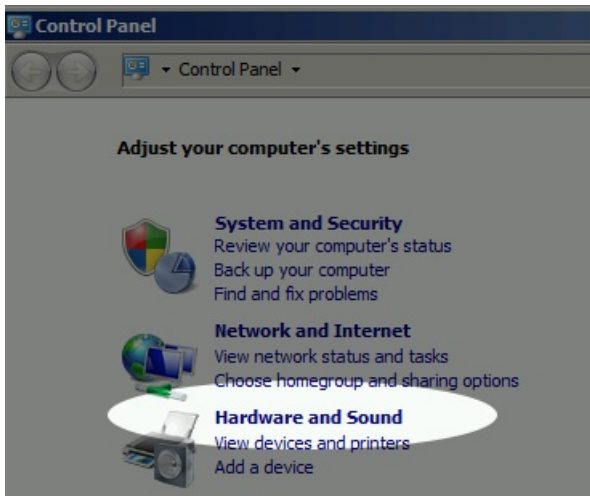
**Goal:** Installing the the Arduino Mega device driver on Windows 7.

The automatic driver install process for Windows 7 might automatically install a Microsoft Windows version of the Arduino Mega driver. This is not the driver LANforge expects. These instructions will guide you how through uninstalling an old driver and installing the new driver.

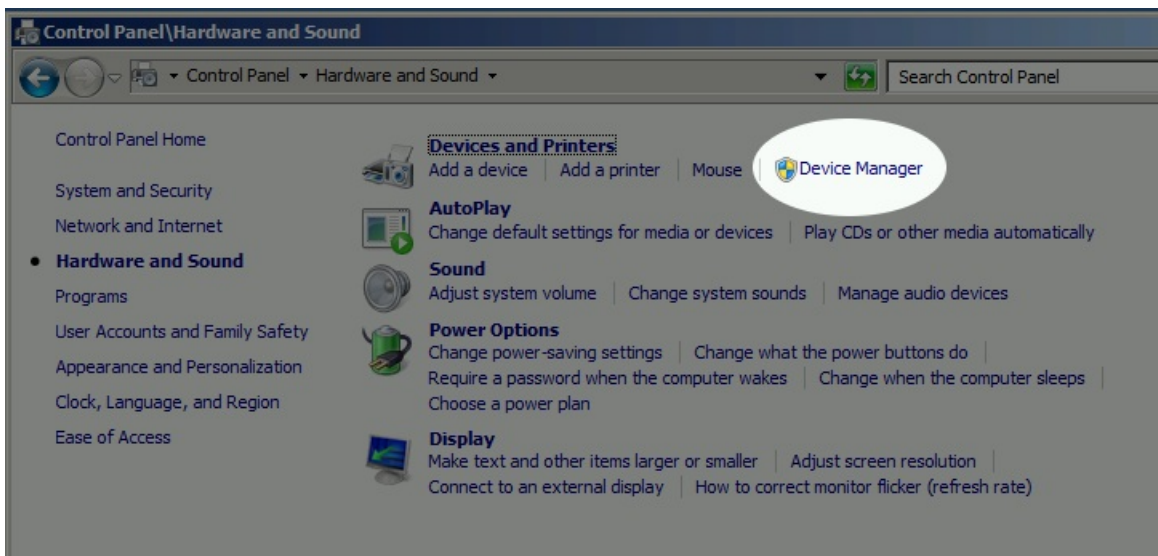
1. You want to install the windows version of the LANforge Server beforehand. For more information see [Installing LANforge Server on Windows](#)
2. This process requires you to operate the Control Panel as Administrator. Some patch-levels of Windows 7 have secured this. A useful work around for this will be discussed shortly.
3. Getting to the **Device Manager**
  - A. Start by clicking the *Start Menu* and typing **control**



B. Select **Hardware and Sound**



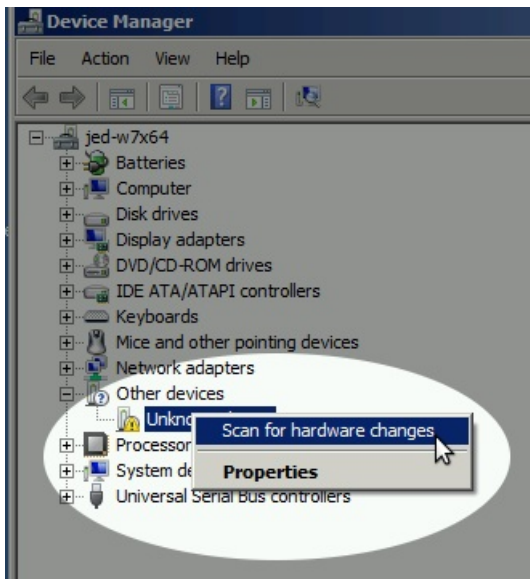
C. Select **Device Manager**



D. In the Device Manager window, *right-click* on the computer and select **Scan for hardware changes**



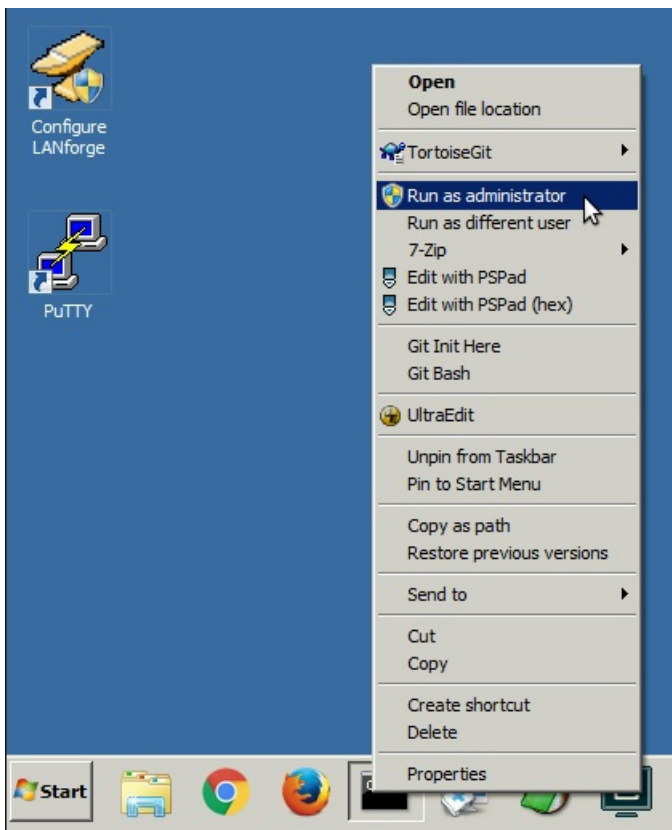
- E. There will be an **Other devices**→**Unkown Device** entry. *Right-click* on it. If the options menu **only** gives you *Scan for hardware changes* or *Properties*, you might need to restart your control panel as Administrator, that is discussed next.



- F. If you have recently removed a driver, you might need to reboot your Windows system for it to complete the driver installation process.

4. Using the **Run as Administrator** option to start the Control Panel in administrator mode.

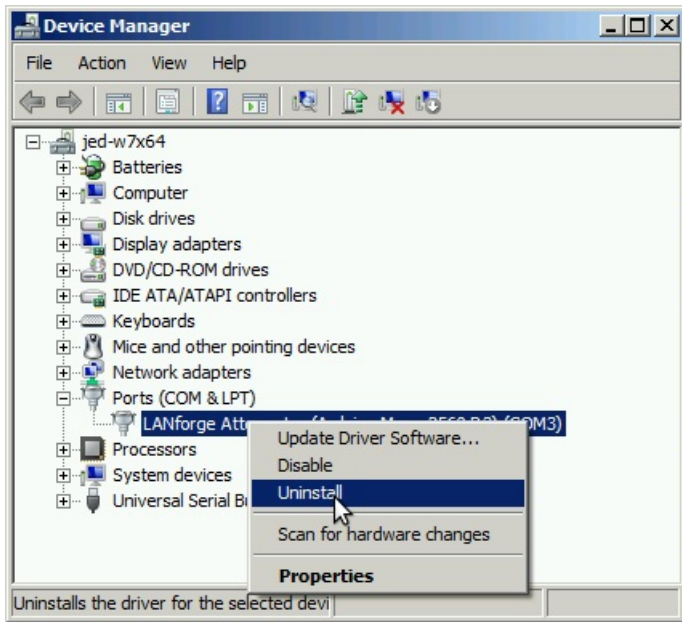
- A. This works best with a **CMD** window pinned to the task bar. You can do that using *Start Menu*→**cmd** **ENTER** ; and then *right-click*→ **Pin to Task Bar** option on the task bar icon for the cmd.exe window.
- B. Then *right-click*→ **Run as Administrator** on the **cmd** taskbar icon



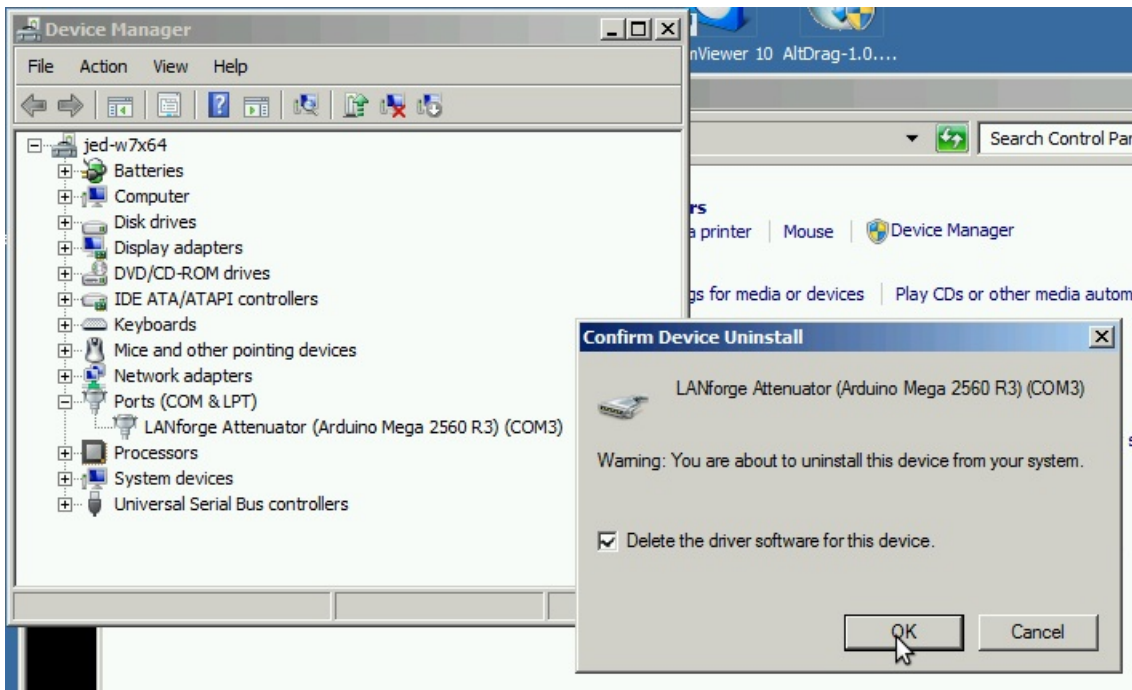
- C. Repeat your navigation steps to get to the **Device Manager**

5. If you find a previously installed driver, uninstall it. Especially if this is labeled **Windows Arduino Mega**

A. *Right-click* → **Uninstall**



B. Select *Delete the driver software for this device*, and click **OK**



C. *Right-click* on the computer, and select **Scan for Hardware Changes**

D. You might need to un-plug and plug-in your Attenuator.

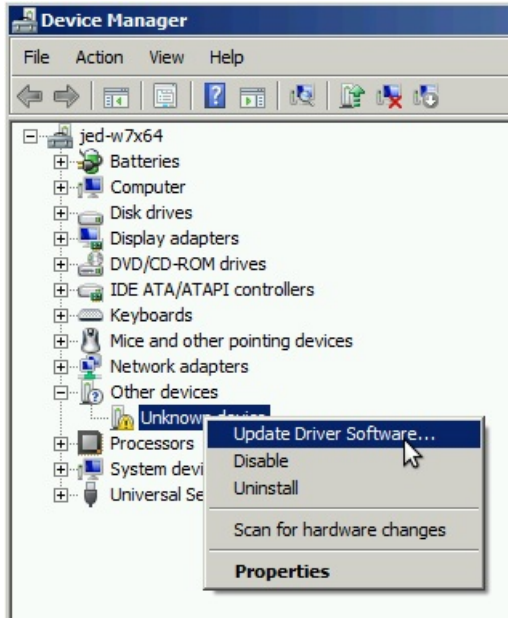
E. If the *right-click* options menu does not allow you to change drivers, reboot your system.

6.

## Install the LANforge Arduino Driver

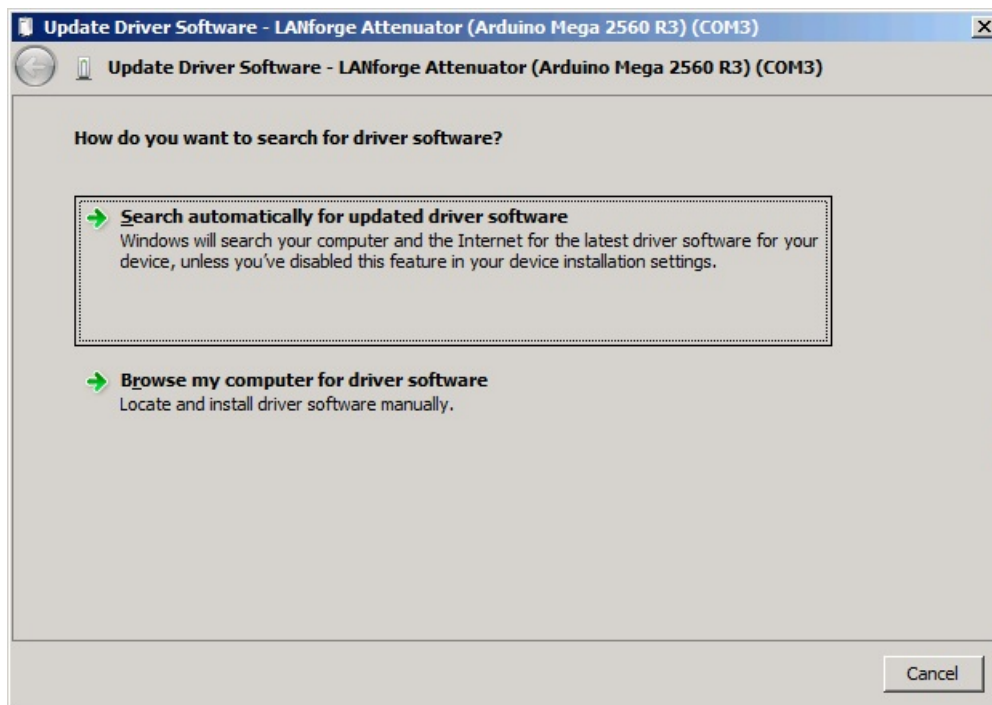
Depending on your version of Windows, you might not find the driver file using the **Browse my computer** choice, you might find it using the **Automatically Search** choice.

- A. In **Device Manager**, you want *right-click* on the **Unknown Device** and select **Update Driver Software...**



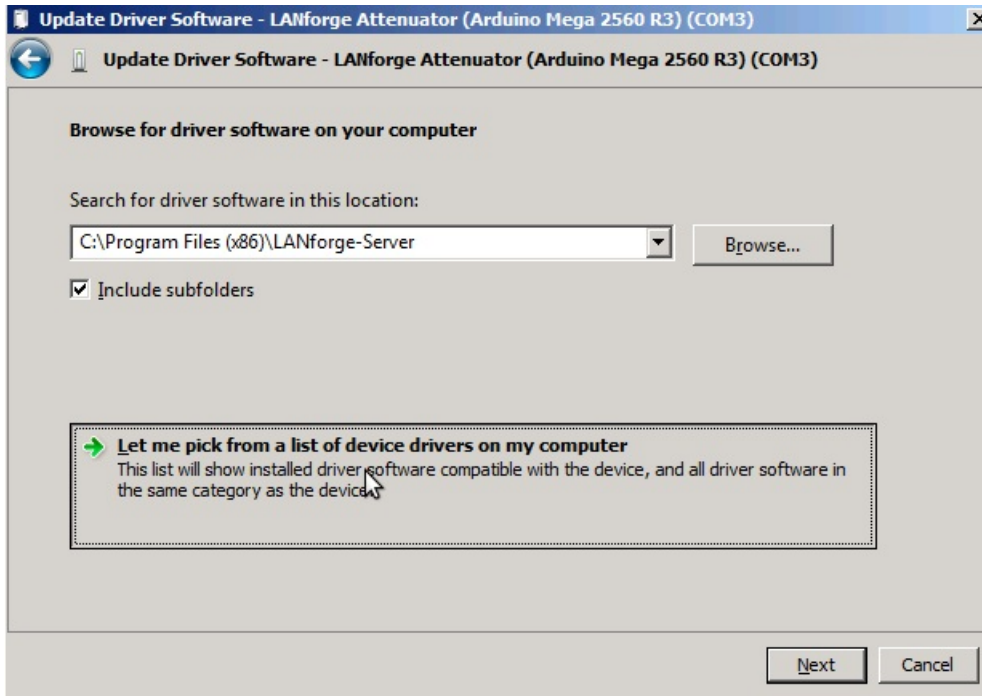
- B.

**Option 1: Select Search automatically for updated driver software:**

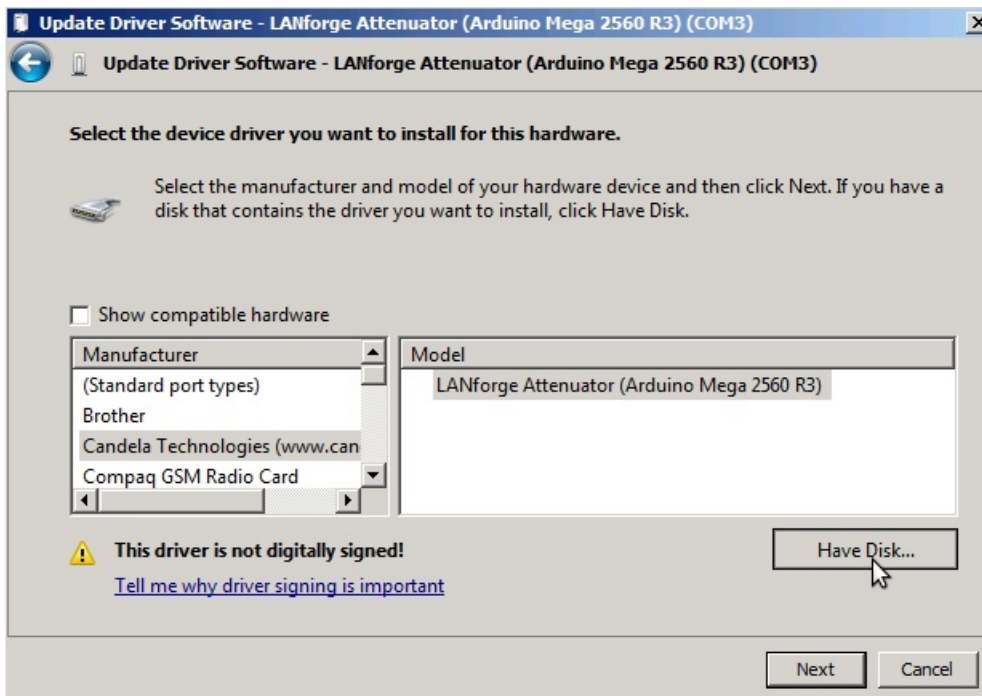




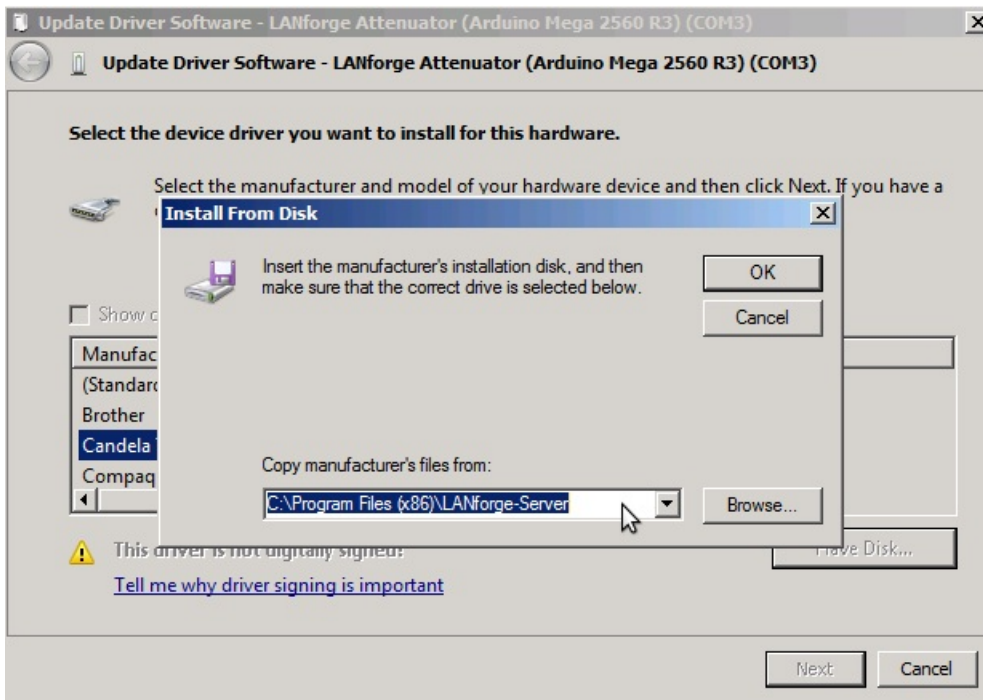
A. Click on **Let me pick from a list of device drivers on my computer**



B. You see a list of drives. Click the **Have Disk** button:

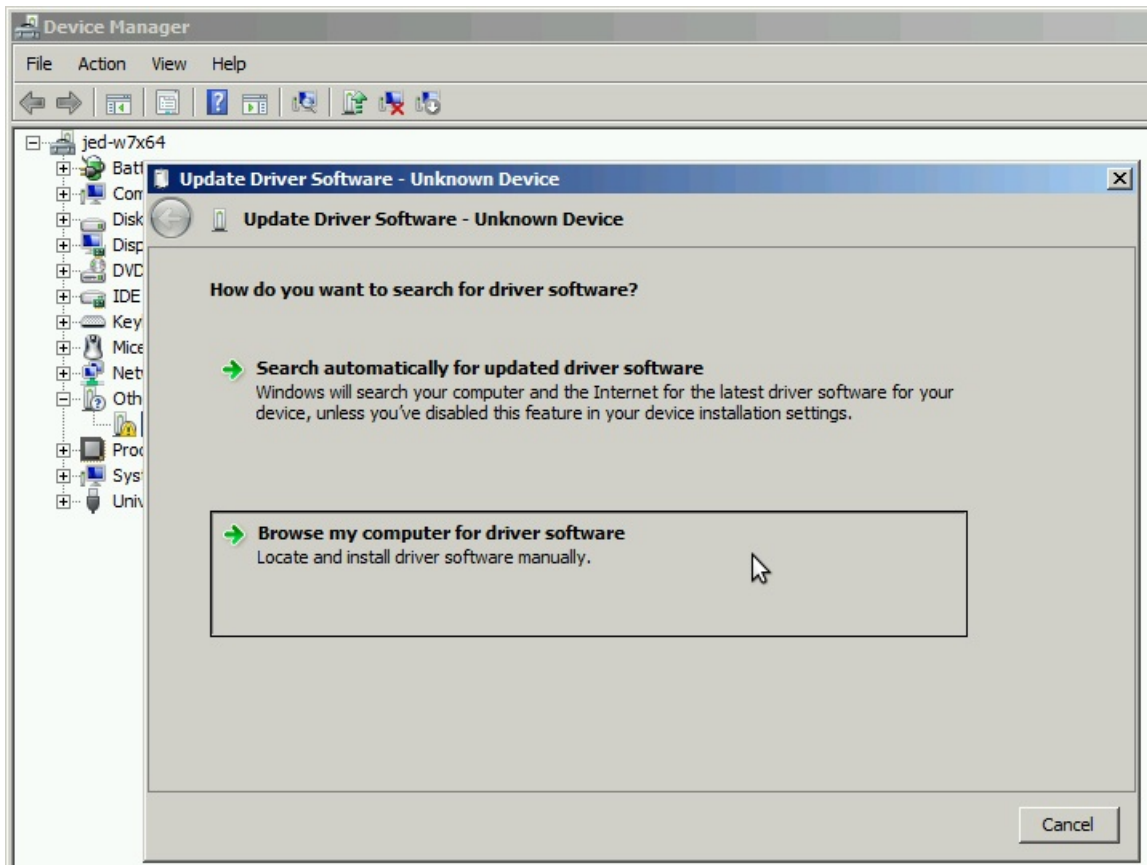


c. Enter C:\Program Files (x86)\LANforge-Server. Click **OK**.

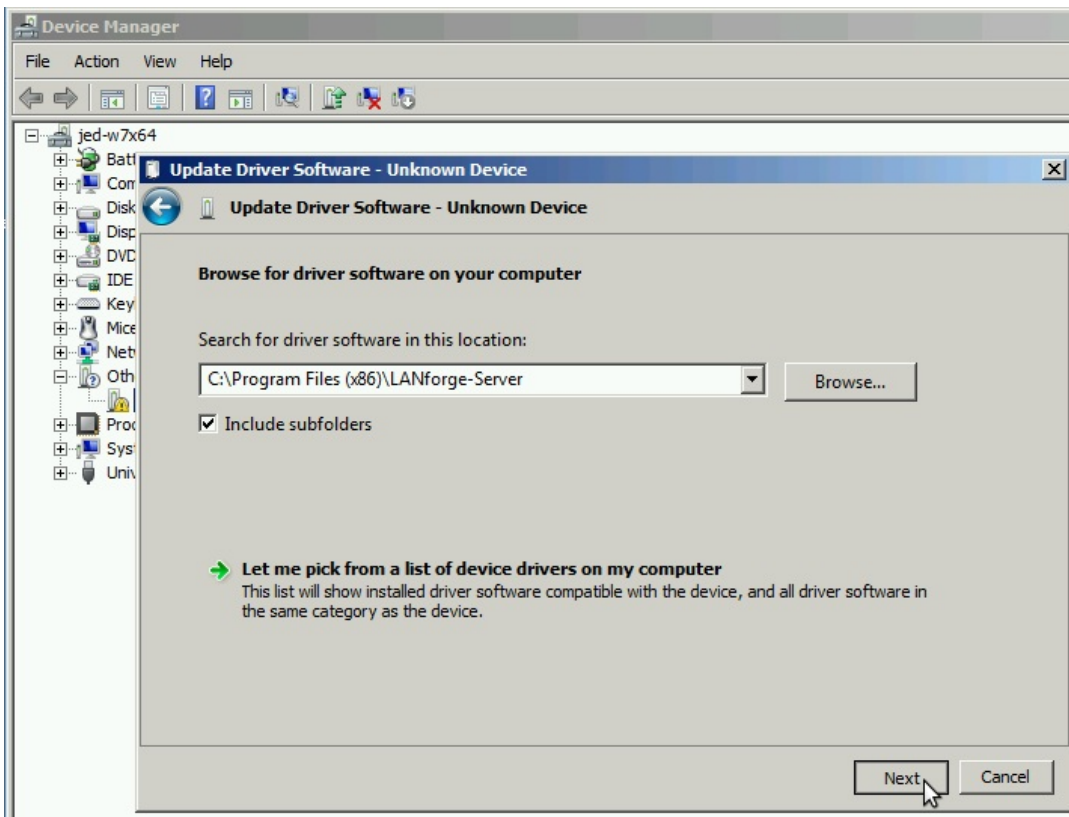


C.

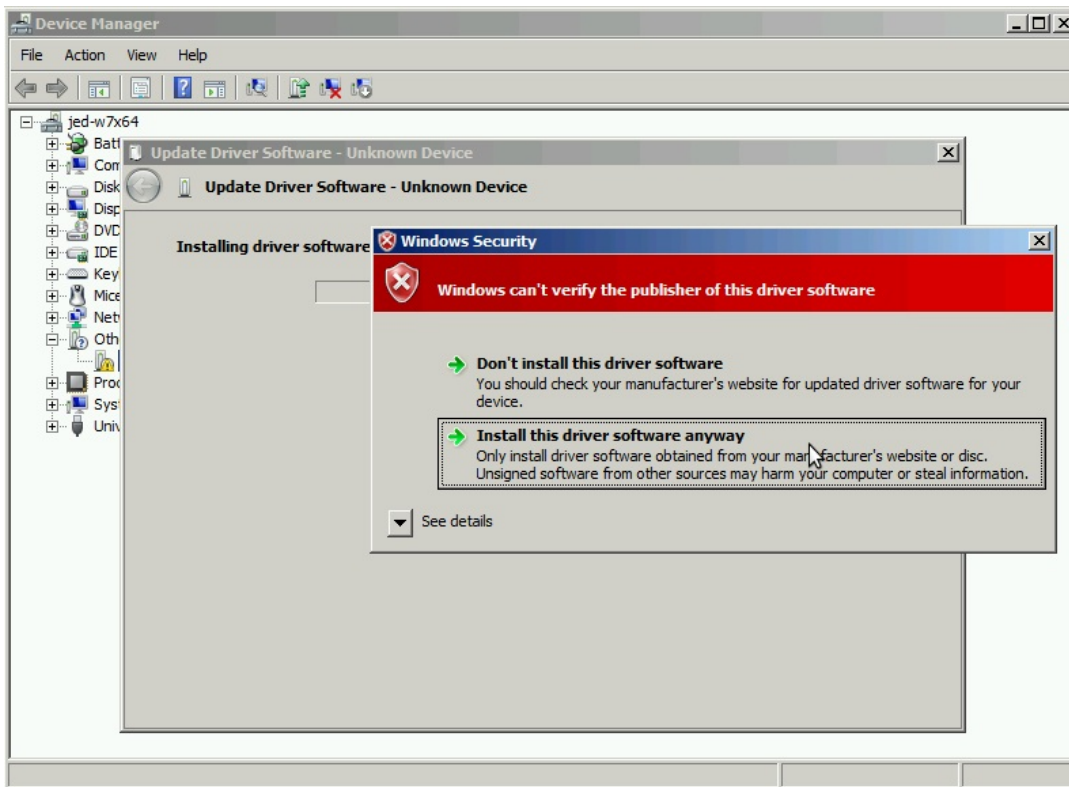
### Option 2: Select Browse my computer for driver software:



A. Browse to C:\Program Files (x86)\LANforge-Server and click **Next**

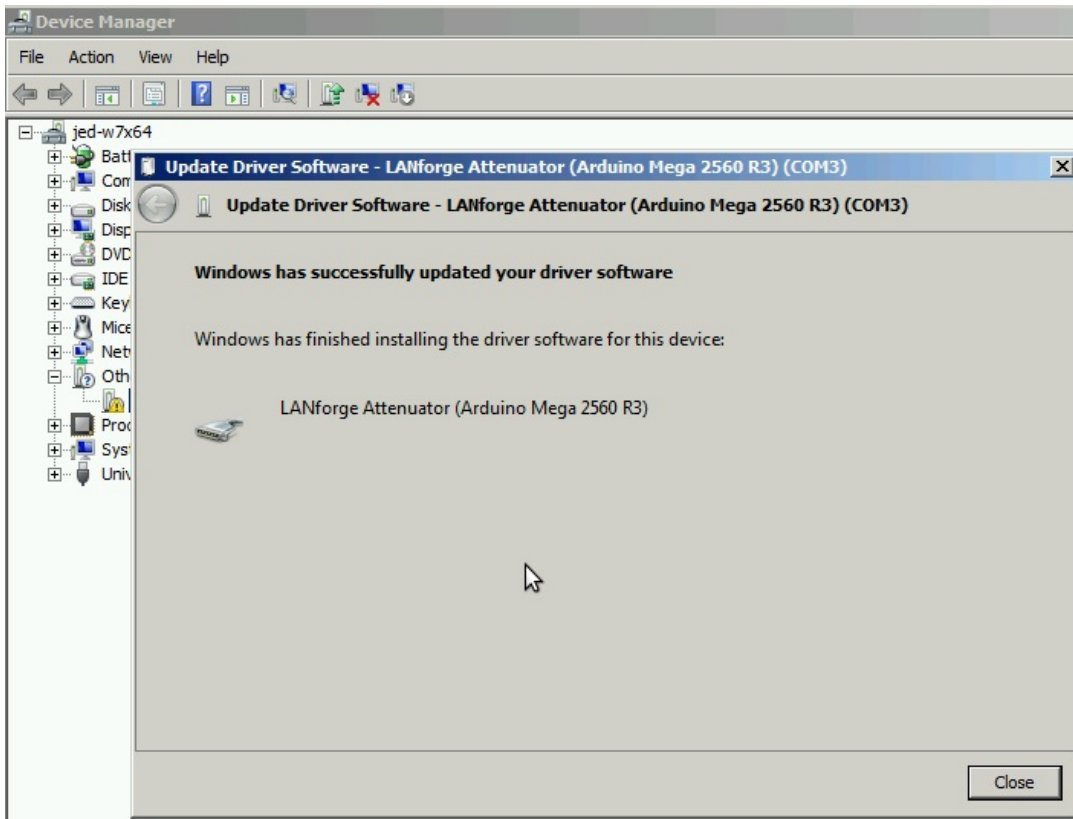


B. This is not a signed driver. Please confirm the installation.





c. You will see the Update Driver Software confirmation. Click **Close**.



D. You should not need to reboot your system in order to run the Attenuator.