

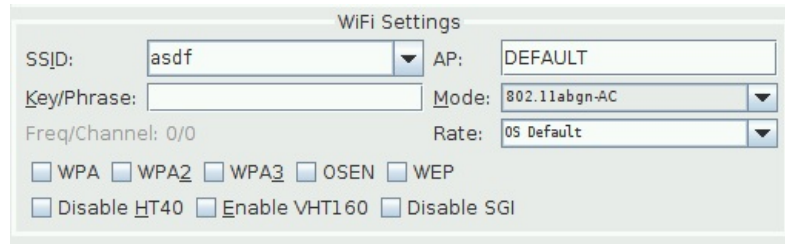
Use FireFox with a virtual station to Browse a DUT

Goal: Use FireFox with a virtual station to Browse a DUT

Access points used as a DUT in a wireless-mesh scenario might not have an ethernet port available to be able to access their management screen. Rather, they require a station to associate to the DUT to access the management console. LANforge virtual stations operate in the context of a VRF (virtual routing) device that protects them from the default routing table of the system. This makes using a browser over a station unintuitive; special commands are required to do this. Requires LANforge 5.3.9 or later.

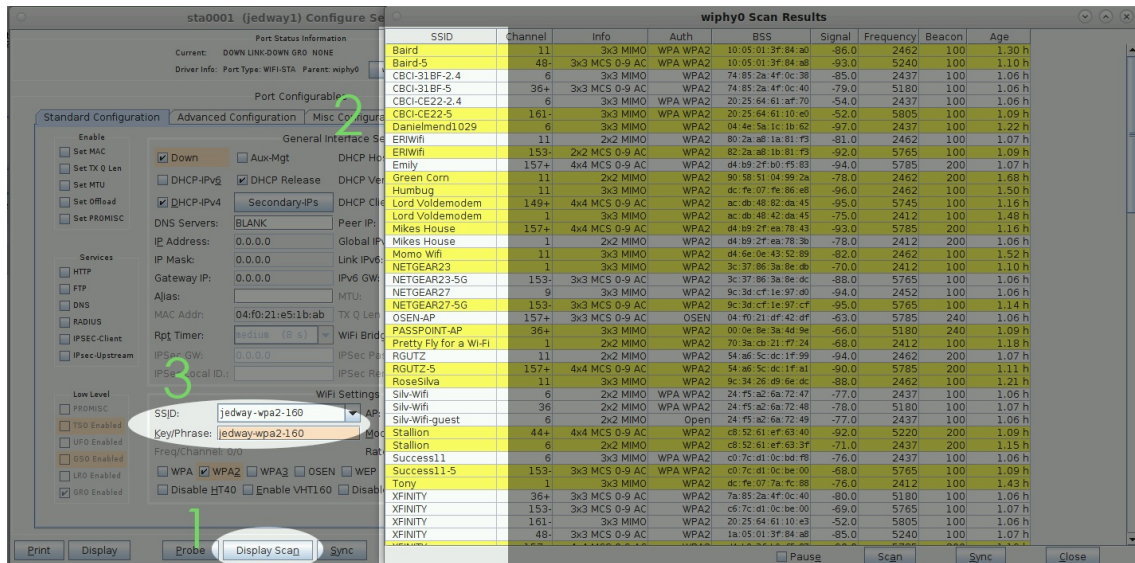
1. Associate a station to your DUT

- A. Create a station as necessary or use the `wlan0` device
 - A. if you know the SSID credentials, enter those.
 - B. If you need to discover the SSID, enter anything into the SSID box, like `asdf` so you can start a scan.



For more information see [Create stations](#)

- B. Scan for your DUT SSID.



- C. Configure your station to use the DUT SSID credentials and DHCP.

2. Use the `vrf_exec .bash` script to start Firefox

The `vrf_exec .bash` script changes the networking context for the browser so it can use your station.

A. Open a terminal

```
$ sudo -s
```

B. Become root:

```
$ cd /home/lanforge
```

C. Go to the LANforge directory:

```
$ ./vrf_exec.bash wlan0 firefox http://10.0.0.1/
```

D. Start firefox:

3.

Possible difficulties

If you have just rebooted your LANforge system and are jumping to step 2 without starting the LANforge GUI, you might have difficulty getting Firefox to display. By starting the GUI, it runs the `xhost +` command and relaxes some basic X11 security settings to let other users display windows on the desktop.

Candela Technologies, Inc., 2417 Main Street, Suite 201, Ferndale, WA 98248, USA
www.candelatech.com | sales@candelatech.com | +1.360.380.1618