

# Port Test

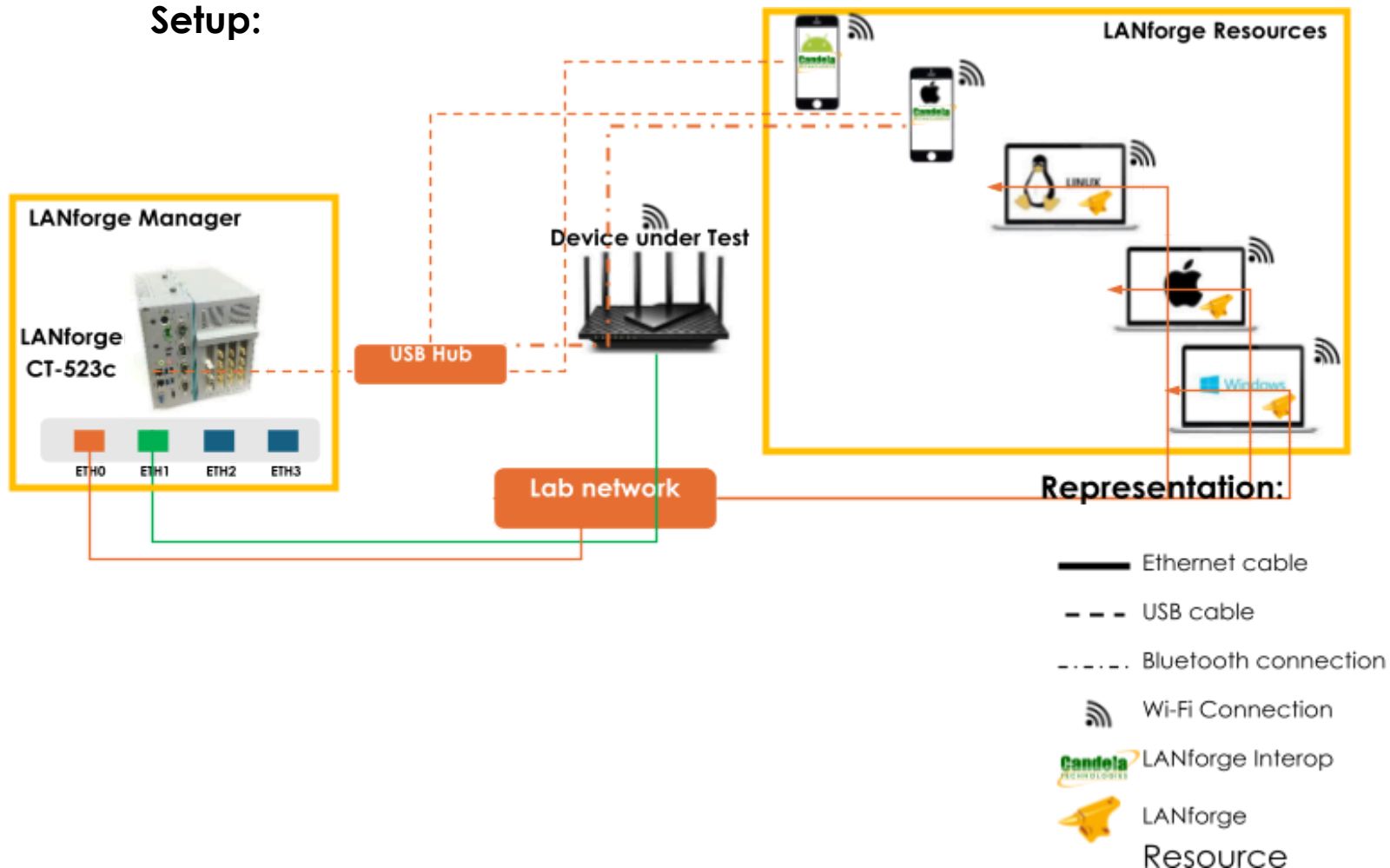
## Goal:

Setup and run a Throughput Test for an Access Point using [LANforge CT523c](#) or similar system and real devices clustered to Candela Box, in order to test how well the AP can handle different OS Platforms. This is a good test of the AP's performance across real devices.

## Purpose:

In this test scenario, the LANforge CT523c generates packets on the Ethernet port toward the wired side of the Access Point. The AP then transmits these frames to the real devices connected to the AP via Wi-Fi. LANforge will run a throughput test, cycle through the next set of stations, and continue this process until all tests are completed. Chambers and attenuators are not required for this test; however, running it inside isolation chambers typically provides more stable and reliable results. This feature is supported in LANforge version 5.4.9 and later.

## Setup:

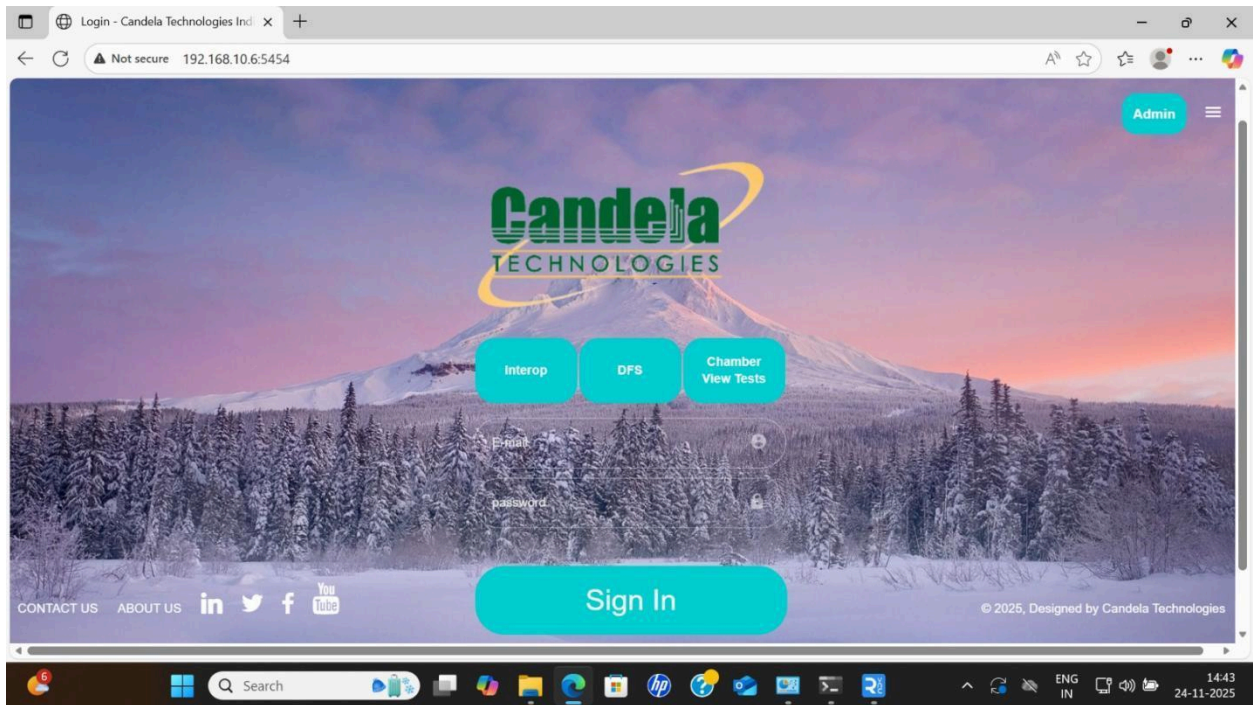


## Pre-requisites:

- Interop and Web GUI license.
- Web GUI software installation.

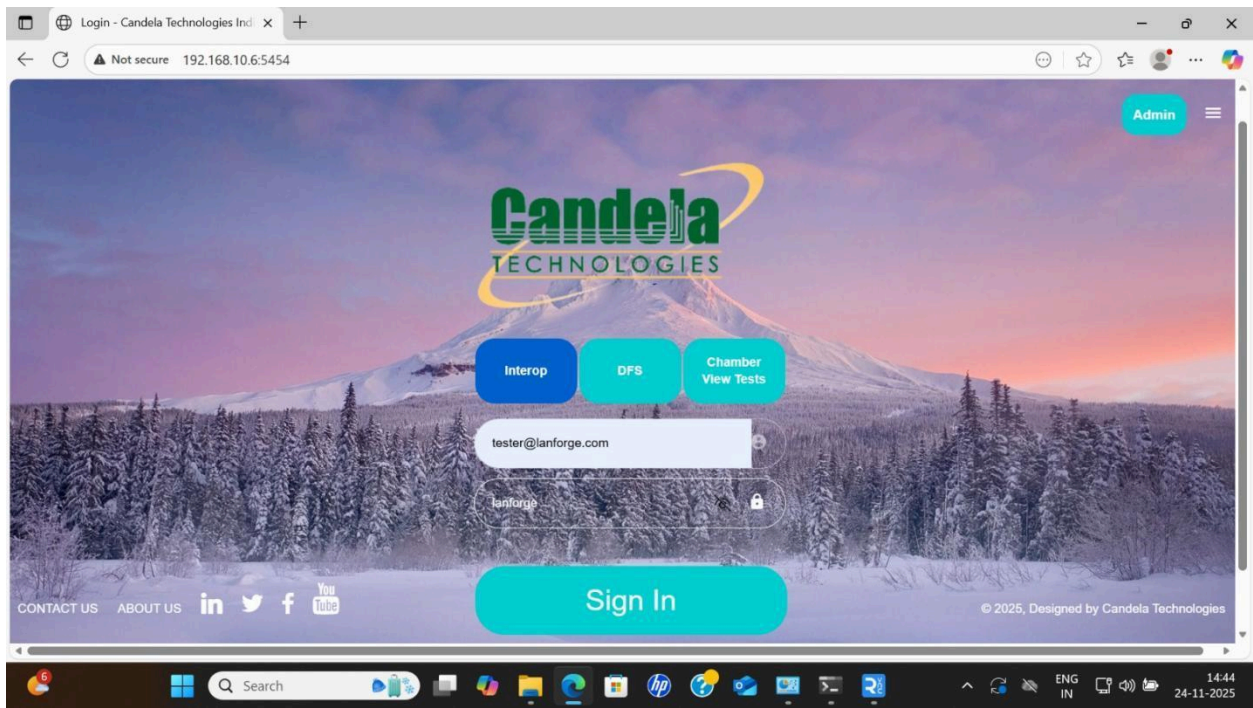
## Testcase:


**Step 1:** Open Chrome and enter the LANforge Manager's IP address followed by port 5454 in the address bar. This will open the Web GUI Login Page as shown below.



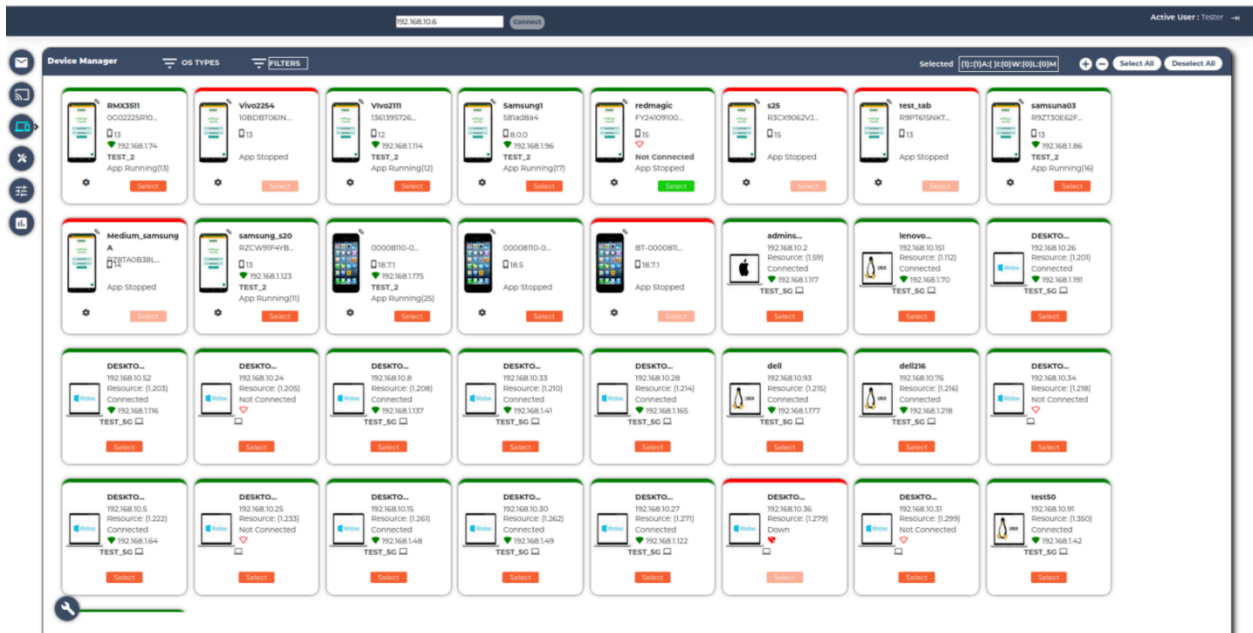
**Step 2:** Select Interop and enter login credentials to sign in.

- o Username: tester@lanforge.com
- o Password: lanforge



**Step 3:** After logging into the WebGUI, the user should enter the LANforge Manager's IP address and select *Connect*. The  Device Manager page will then be displayed, showing all real devices connected to the Candela Box. This view includes devices across multiple operating systems, such as Android, iOS, Windows, Linux and MacOS

**Note:** Real Devices must be clustered using [Interop Cookbooks](#) and have a unique hostname to appear in Device Manager.



**Step 4:** After reviewing the connected devices, the user should navigate to the *Testing* page. In *Testing Page*, select the required devices in the *Available Devices* pane, choose *Port Reset Test* from the *Tests* pane, enter the necessary test parameters, and then click *Run Test* to begin the *Port Reset Test*.



## Port Reset Test Parameters

- Instance name\*** - Specifies the custom name for the test. The instance name must begin with an alphabet.

*Example: PR\_Test1*

Special characters and numbers cannot be used at the beginning of the instance name. Each test must have a unique instance name.

- Resets\*** - The total number of times each selected client will be commanded to disconnect and connect to Wi-Fi during the test.

Ex: 2

- Reset Interval\*** - The amount of time (in seconds) the system waits between each consecutive port reset operation.

Ex: 70

**Client Resource<sup>#</sup>** - Automatically populated with the Resource IDs of the selected devices.

Ex: 203, 208

- d. **Upstream port\*** - Indicates the AP's wired connection to the LANforge Ethernet interface.  
Ex: eth2-192.168.1.229
- e. **Android Release\*** - The specific versions of the Android OS that the test will target on the mobile clients.  
Ex: 12, 13
- f. **SSID\*** - The name of the Wi-Fi network that clients are commanded to join.  
Ex: OpenWifi, TEST\_2G
- g. **Encryption\*** - The security protocol used by the network, which determines the handshake method.  
Ex: WPA2-Personal
- h. **Password\*** - The security key required for the clients to authenticate and connect to the specified SSID.  
Ex: Password@123

\* - Compulsory, # - Automatically filled

**Step 5:** After clicking *Run Test*, an instance will be created using the specified test name. During the test execution, the user can monitor the real-time graph, review logs in the Log Viewer, and observe the configured test parameters. Once the test has completed, the user should generate the PDF report from the *Testing* page and save it to the desired directory.

**Note:** After the Test completion detailed PDF report is saved in the *webgui\_reports* folder located under the *home/lanforge* directory on the LANforge Manager.

Sample PDF Report:

[https://drive.google.com/file/d/1bUJeWxkiPKc2kVDE2492AzxYD\\_ThVlg5/view?usp=sharing](https://drive.google.com/file/d/1bUJeWxkiPKc2kVDE2492AzxYD_ThVlg5/view?usp=sharing)