

# QoS Test

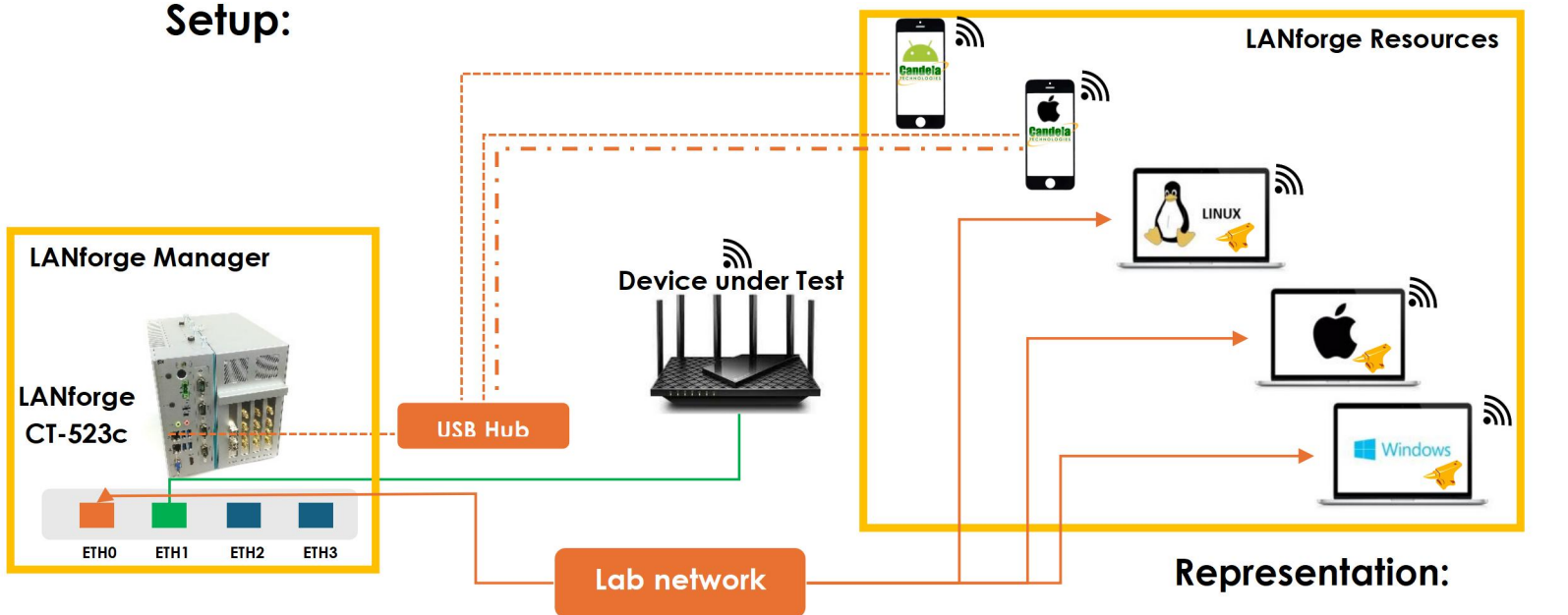
## Goal:

Set up and execute a Quality of Service (QoS) test for an Access Point using the [LANforge CT523c](#) or a similar system, alongside real devices housed in a Candela Box. The objective is to evaluate the Access Point's effectiveness in prioritizing various types of network traffic

## Purpose:

In this test scenario, the LANforge CT523c generates packets with a selected Type of Service (ToS) on the Ethernet port toward the wired side of the Access Point (AP). The AP then transmits these frames to the real devices connected via Wi-Fi. LANforge performs a QoS (Quality of Service) test on all clients simultaneously; this test is primarily used to verify whether the Device Under Test (DUT) is correctly prioritizing traffic. Chambers and attenuators are not required for this test; however, running it inside isolation chambers typically provides more stable and reliable results. This feature is supported in LANforge version 5.4.9 and later.

## Setup:



## Representation:

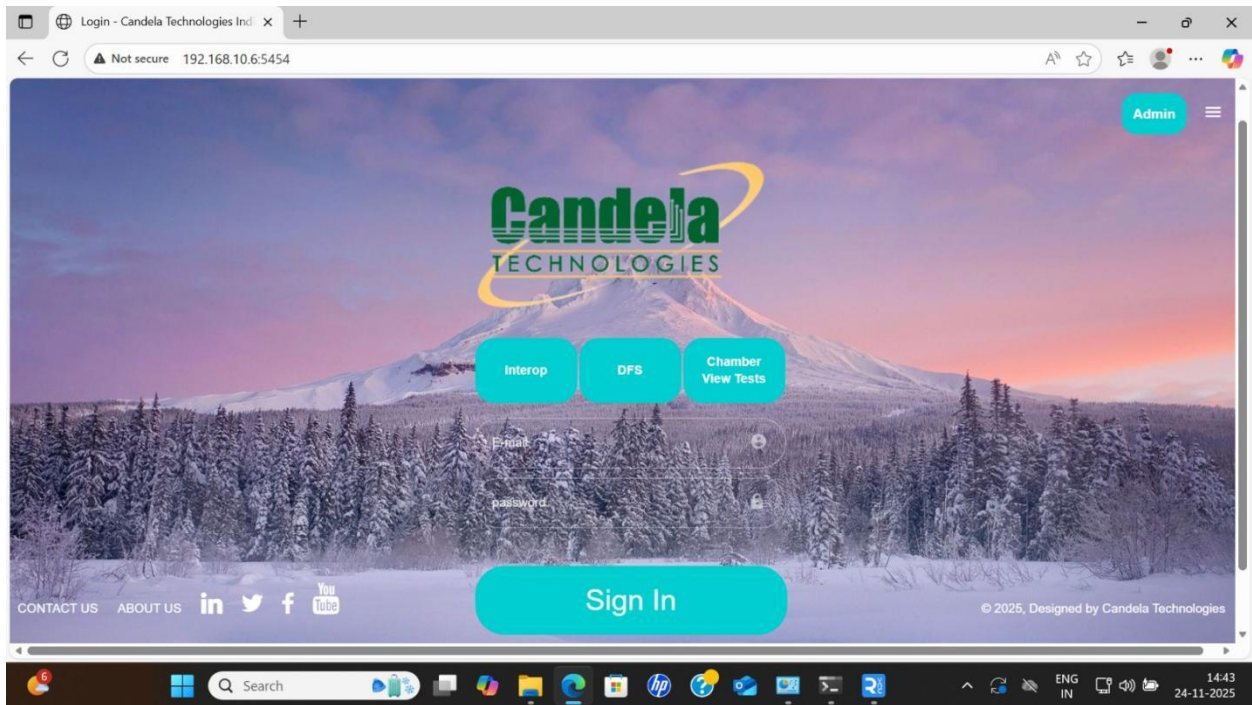
- Ethernet cable
- USB cable
- Bluetooth connection
- Wi-Fi Connection
- LANforge Interop
- LANforge

## Pre-requisites:

1. Interop and Web GUI license.
2. Web GUI software installation.

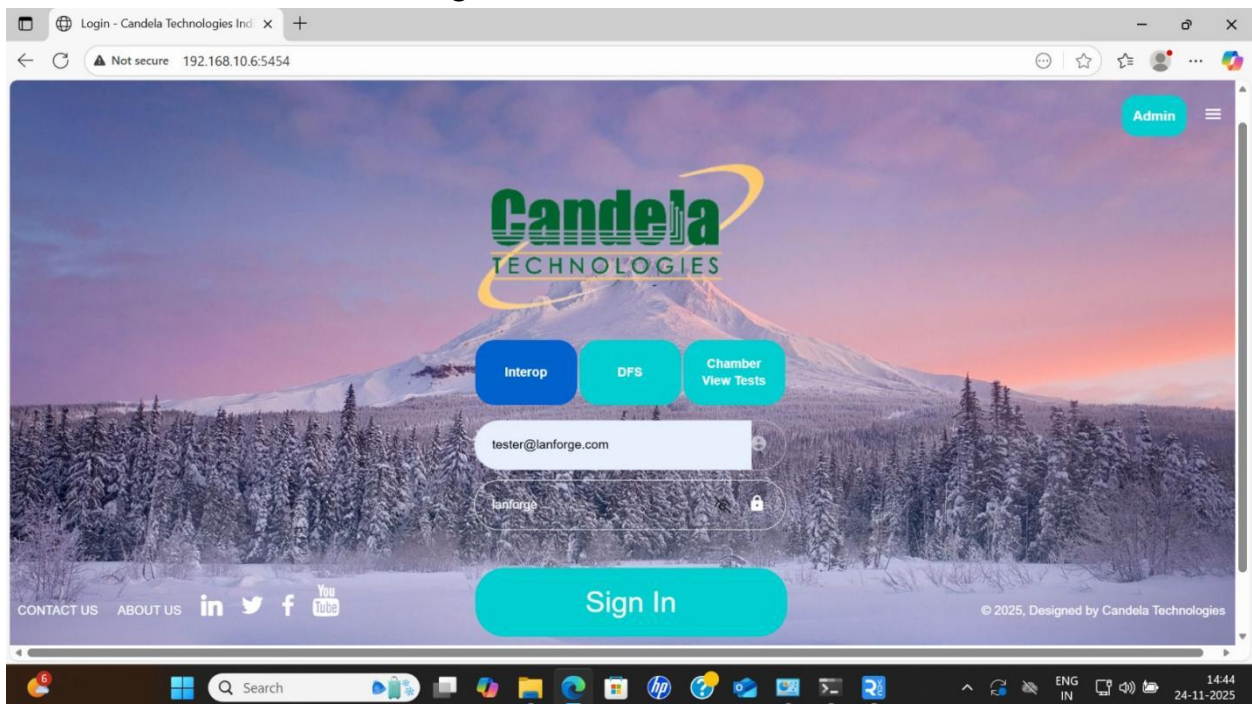
## Testcase:


**Step 1:** Open Chrome and enter the LANforge Manager's IP address followed by port 5454 in the address bar. This will open the Web GUI Login Page as shown below.



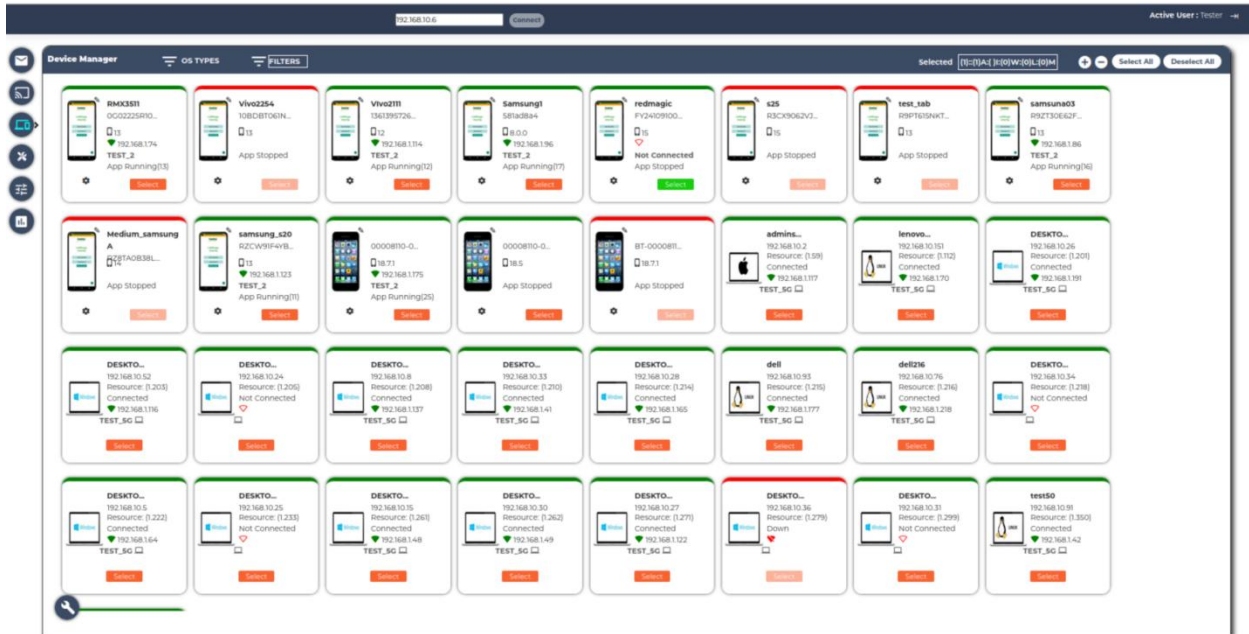
**Step 2:** Select Interop and enter login credentials to sign in.

- Username: tester@lanforge.com
- Password: lanforge

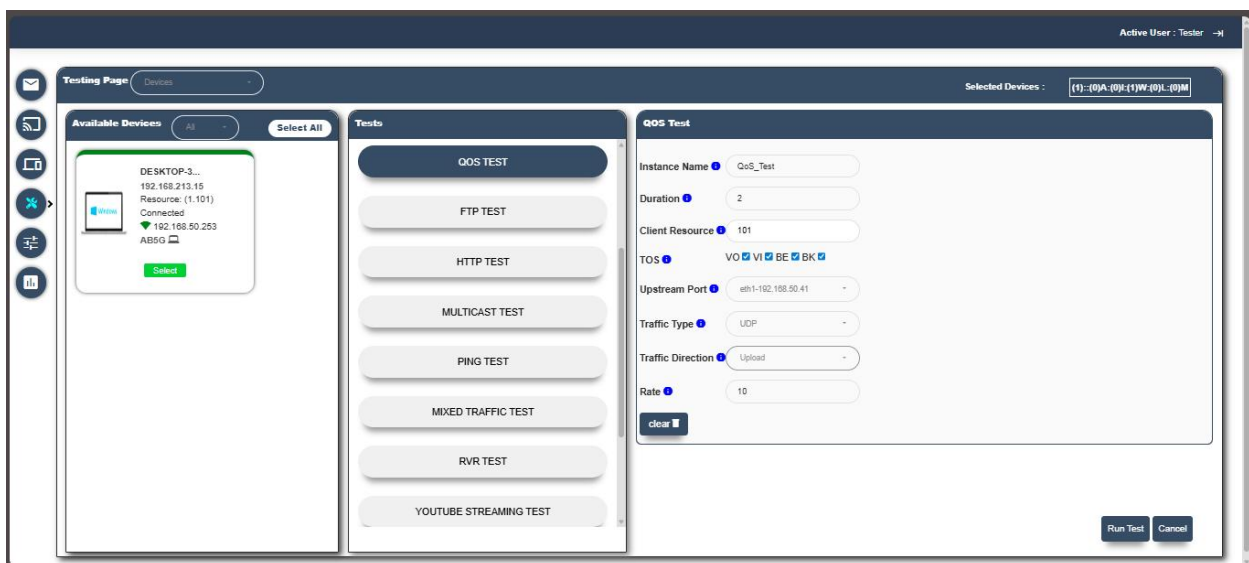


**Step 3:** After logging into the WebGUI, the user should enter the LANforge Manager's IP address and select *Connect*. The  Device Manager page will then be displayed, showing all real devices connected to the Candela Box. This view includes devices across multiple operating systems, such as Android, iOS, Windows, Linux and MacOS

**Note:** Real Devices must be clustered using [Interop Cookbooks](#) and have a unique hostname to appear in Device Manager.



**Step 4:** After reviewing the connected devices, the user should navigate to the **X** Testing page. In Testing Page, select the required devices in the *Available Devices* pane, choose *QoS Test* from the *Tests* pane, enter the necessary test parameters, and then click *Run Test* to begin the QoS Test.



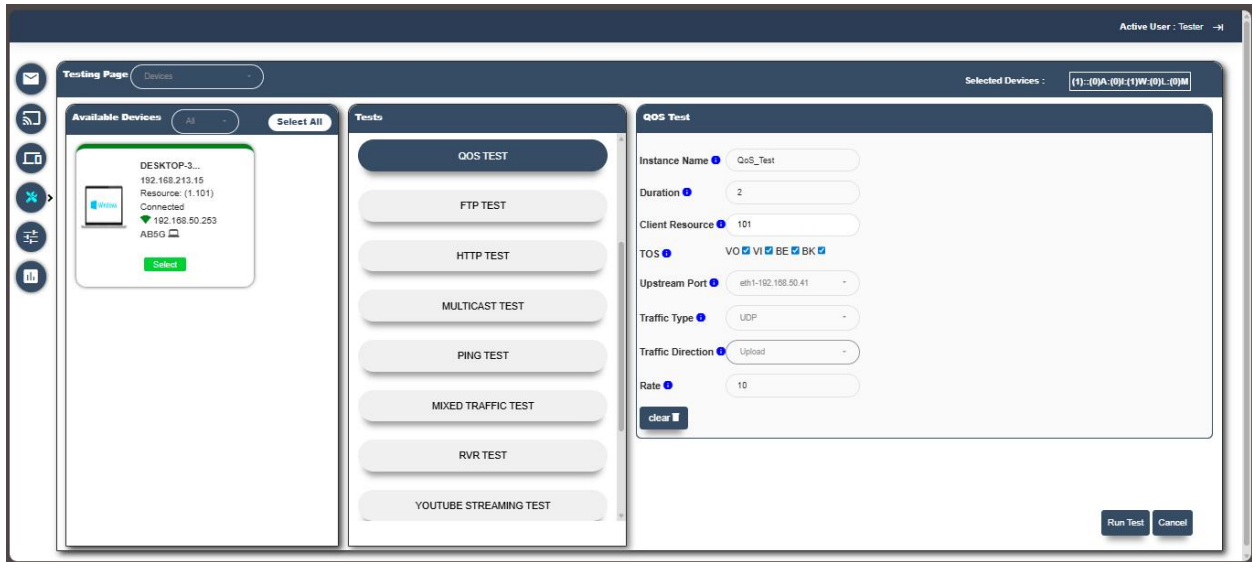
## QoS Test Parameters

- a. **Instance name\*** - Specifies the custom name for the test. The instance name must begin with an alphabet.  
**Example: QoS\_Test**  
Special characters and numbers cannot be used at the beginning of the instance name. Each test must have a unique instance name.
- b. **Duration\*** - Defines the total time for which the QoS test will run.  
Ex: 5 [in min]  
Time is measured in minutes.
- c. **TOS\*** - Data packets are generated with the selected TOS values so that traffic is created for each priority type.  
Ex: VO,VI,BE,BK  
**Client Resource#** - Automatically populated with the Resource IDs of the selected devices.  
Ex: 101
- d. **Upstream port\*** - Indicates the AP's wired connection to the LANforge Ethernet interface used to generate and run traffic.  
Ex: eth2-192.168.50.41
- e. **Traffic type\*** - Specifies the type of traffic to be used in the test.  
Ex: TCP/ UDP
- f. **Traffic direction\*** - Defines the direction of traffic flow for the test.  
Ex: Download/ Upload/ Bi-Directional.
- g. **Rate\*** - Represents the total requested download or upload rate, measured in Mbps.  
Ex: 100 [in Mbps]  
This reflects the effective transmit rate of the AP/Stations.

\* - Compulsory, \*\* - Optional, # - Automatically filled

**Step 5:** After clicking *Run Test*, an instance will be created using the specified test name. During the test execution, the user can monitor the real-time QoS graph, review logs in the Log Viewer, and observe the configured test parameters. Once the test has completed, the user should generate the PDF report from the *Testing* page and save it to the desired directory.

**Note:** When the test is initiated, the L3 endpoints are created in LANforge Manager. After the Test completion detailed PDF report, along with CSV data captured at each timestamp, is saved in the *webgui\_reports* folder located under the *home/lanforge* directory on the LANforge Manager.



Sample PDF Report: [Qos Test.pdf](#)